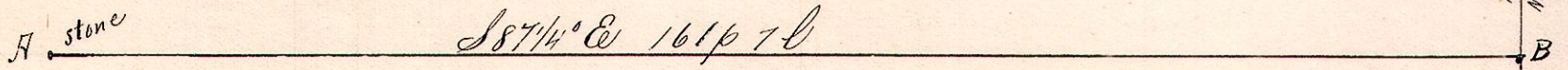


No 439

Northwest Quarter Fractional Section 13 T49 R6



R. H. Sec 2r
6 9 13 SW line

Notes

"A" is a stone at the northwest corner of the southwest quarter of Fractional Section 13, T49, R. 6.

"B," the northeast corner said quarter section is S 87 1/4° E 161 p 70 from A and S 23 1/2° W 7 p 15 from "C" the northwest corner of lot 5 of the first quarter township, of T49 R6. Found stone corner at "C."

Planted large sand stone at B, and took the following new witnesses:

To "B" - Hickory 19 S 56° E 308 and Chestnut 8 N 41 W 116 blks.

To "C" - Oak 6 N 46 E 39 and Birch S 45 E 37.

Chairman, - Francis Baughman and Chas. J. Guet

Others present, - John Yoder, Joseph Mast and John Schlack.

Surveyed for John Yoder, Joseph Mast, et al.

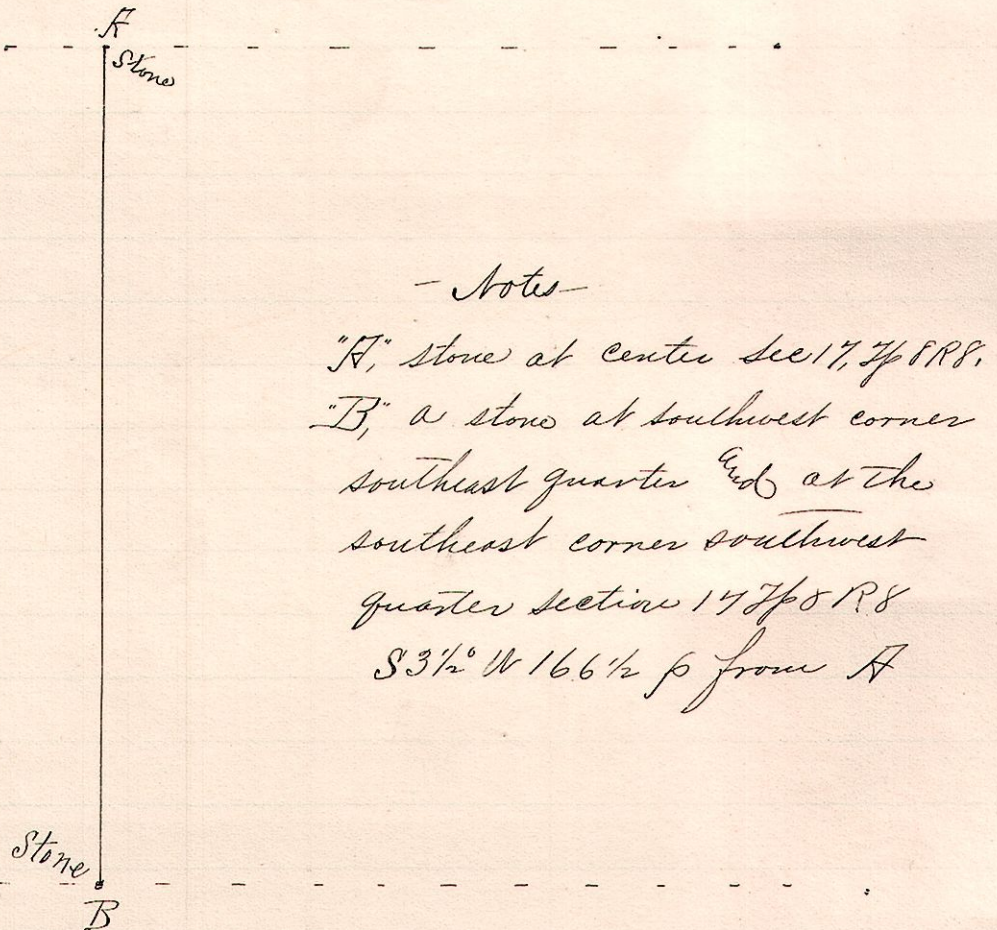
August 17, 1892.

Frank H. Guet,
County Surveyor.

No 440.

8 8 17 SE
SW

SW 2r Sec 17, T49 R8



Notes

"A," stone at center sec 17, T49 R8.

"B," a stone at southwest corner southeast quarter and at the southeast corner southwest quarter section 17 T49 R8 S 3 1/2° W 166 1/2 p from A

Surveyed the line AB, for J. N. Miller, et al

August 30, 1892.

Frank H. Guet,
County Surveyor,
Holmes Co., O.