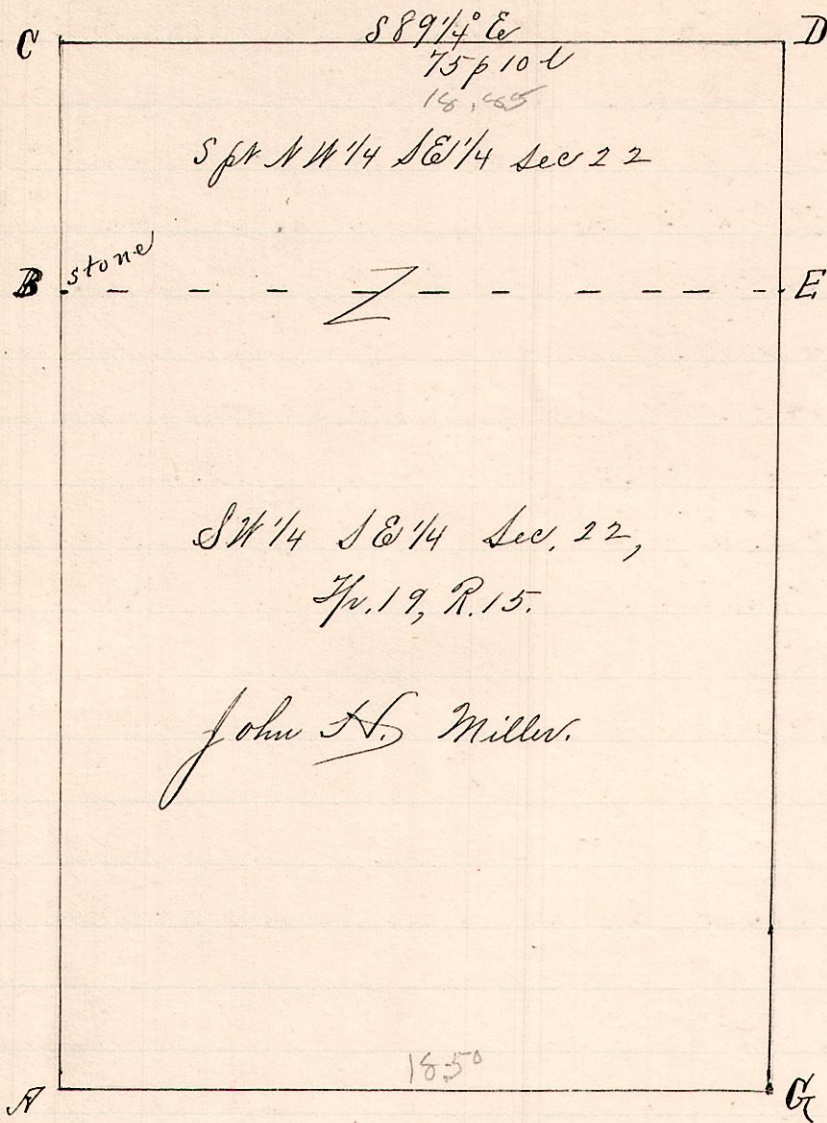


No. 419.

R 7p Sec 22  
15 19 22 S6 S4p.



Notes:-  
 "A", the south quarter corner of sec. 22, Tp 19 R 15, a post in a spring run, - found stumps of witnesses taken by Edgar in April 1861.  
 "B", a stone at NW of SW 1/4 of SE 1/4 sec. 22 1 1/2° E 81 p 15 l from A.  
 "C", a post on Dr sec. line N 1/2° E 25 p 15 l from B.  
 "D", a post S 89 1/4° E 75 p 10 l from C.  
 "E", a post on S. line of sec. 22, at southeast corner of the southwest quarter of the southeast quarter said sec. 22 S 89° E 74 perches from A.  
 BE, the north line said 1/4 Dr.  
 EG " east " " "

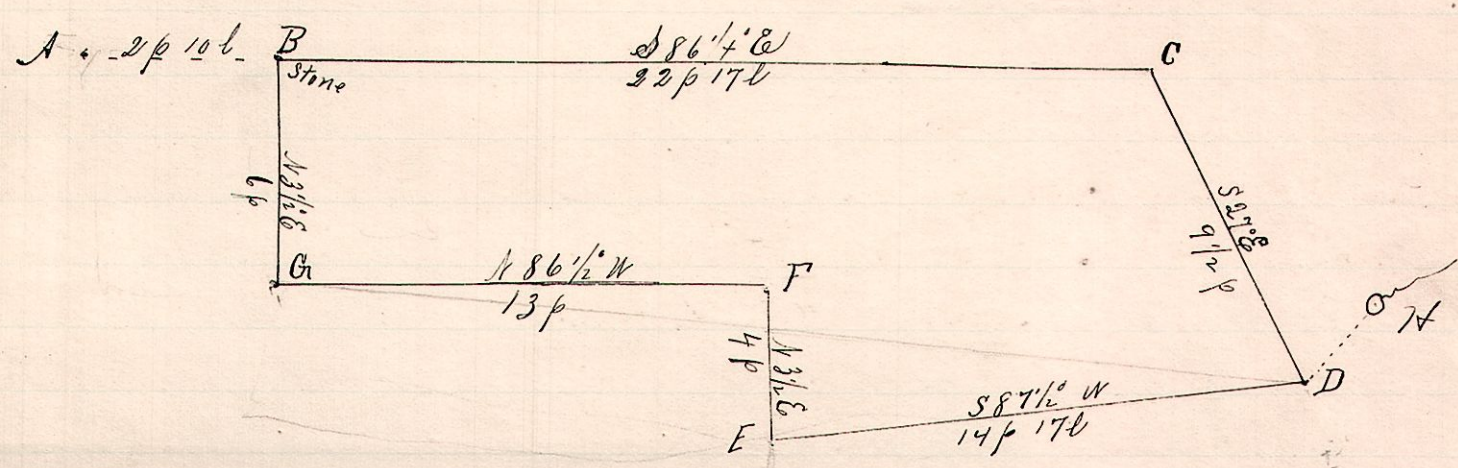
June 24, 1892.

Surveyed the above for John H. Miller, et al.

Frank H. Gunt,  
County Surveyor.

No. 420.

R 7p Sec 24  
6 9 24 S4 NW



"A", is the northwest corner of the southwest quarter of section 24, Tp. 9, R. 6.  
 "B", a stone at southwest corner school grounds S 86 1/4° E 2 p 10 l from A.  
 "C", a post in public road, the northeast corner school grounds S 86 1/4° E 22 p 17 l from B.  
 "D", " " " " southeast " " " S 27° E 9 1/2 p from C  
 "E", a post S 87 1/2° W 14 p 17 l from "D".  
 "F", " " N 3 1/2° E 4 p from E.  
 "G", " " N 86 1/2° W 13 p " F and S 3 1/2° W 6 p from B.  
 "H", the water privilege, a spring across road, N 42° E 56 links from D.

Surveyed the above school site for the Board of Education of Hardy Township and the Spring Brothers June 30, 1892.

Frank H. Gunt,  
County Surveyor.