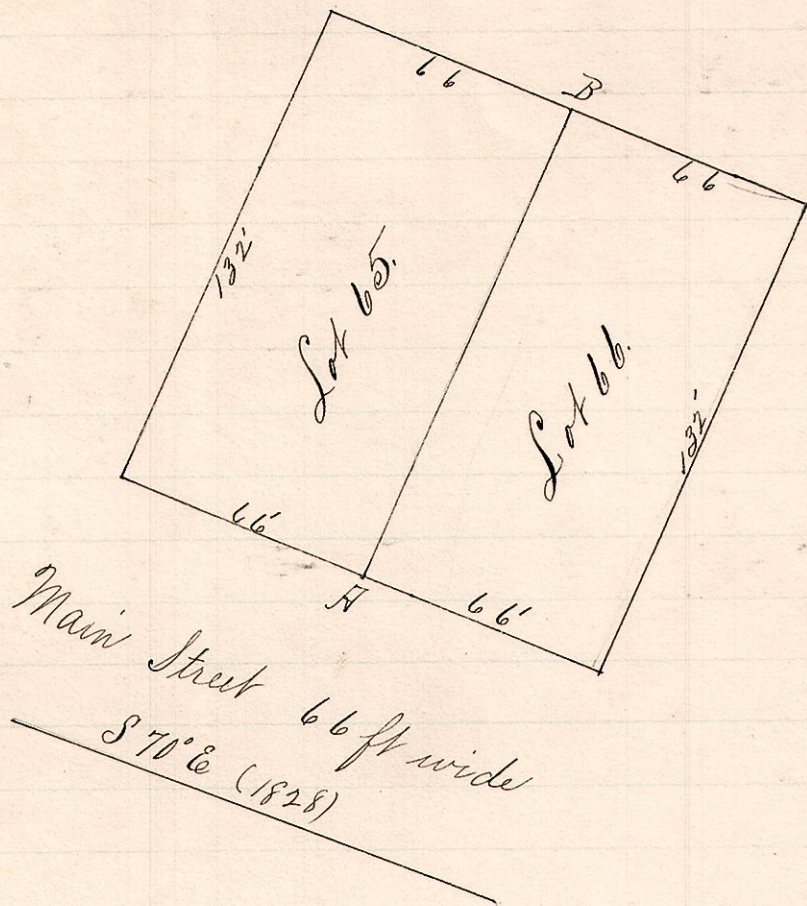


No 408

R 7th Sec 2^d
15 19 13 Nashville



- notes -

AB is the line between Lots 65 and 66 Nashville, O. Said lots are part of the original town as laid out in 1828 by Samuel Robinson. Lots being 66 ft front by 132 ft deep.

May 17th 1892.

Surveyed the above for Shreve and Oberholzer

Frank Lovett.

Frank H. Gunt,
County Surveyor.

No 409

15 20 26 NW SE

- Notes -

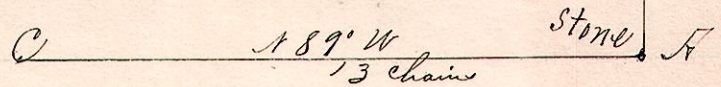
"N," a stone at southeast corner Northwest Quarter Section 26 T^p 20 R 15.

"B," a post on East line said Tr. N 1° E 12 chains from A.

"C," a post on South line, N 89° W 13 chains from A.

Witness to A. - W. oak 16 N 62° W 72' E Elm 12 S 50° E 84.

Frank E. Lovett.



Surveyed the above May 21, 1892, for Frank E. Lovett and Robert Peatty to determine the East and South lines of 20²⁰/₁₀₀ acres in the southeast quarter of the Northwest quarter of Section 26, T^p 20, R 15.

Frank H. Gunt,
County Surveyor,
Holmes Co., O.