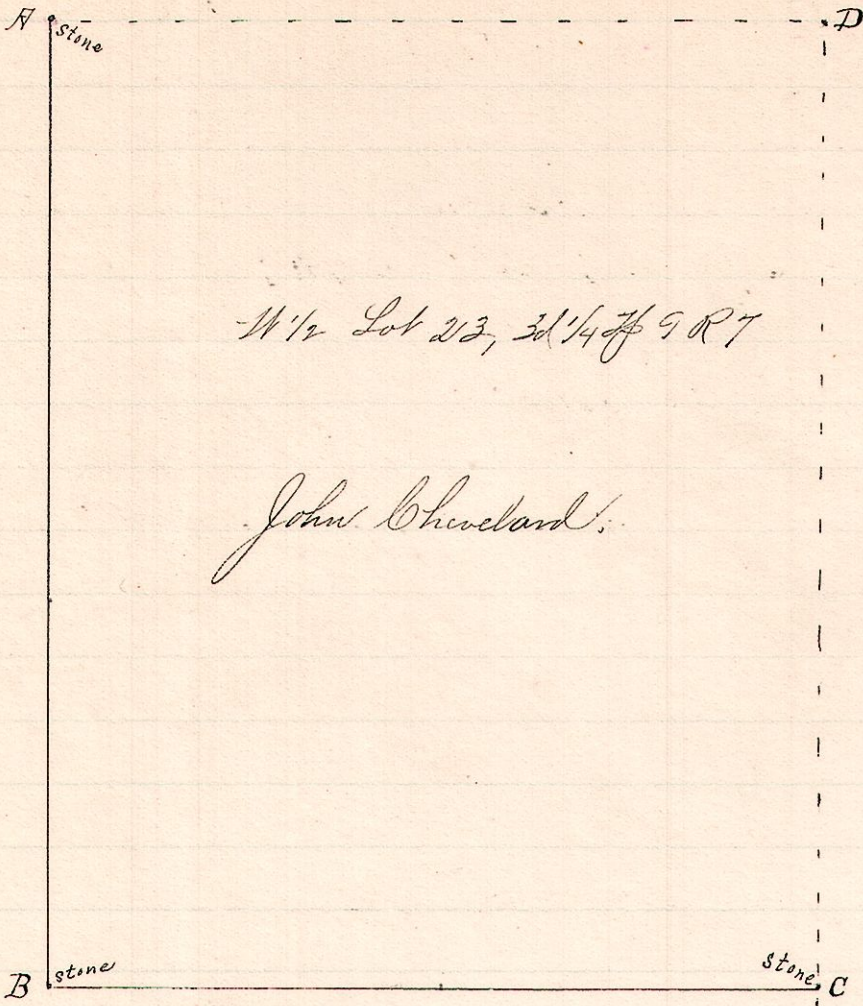


No. 386.

R 7p 2r 7 Lot
7 9 3d 23 1/4



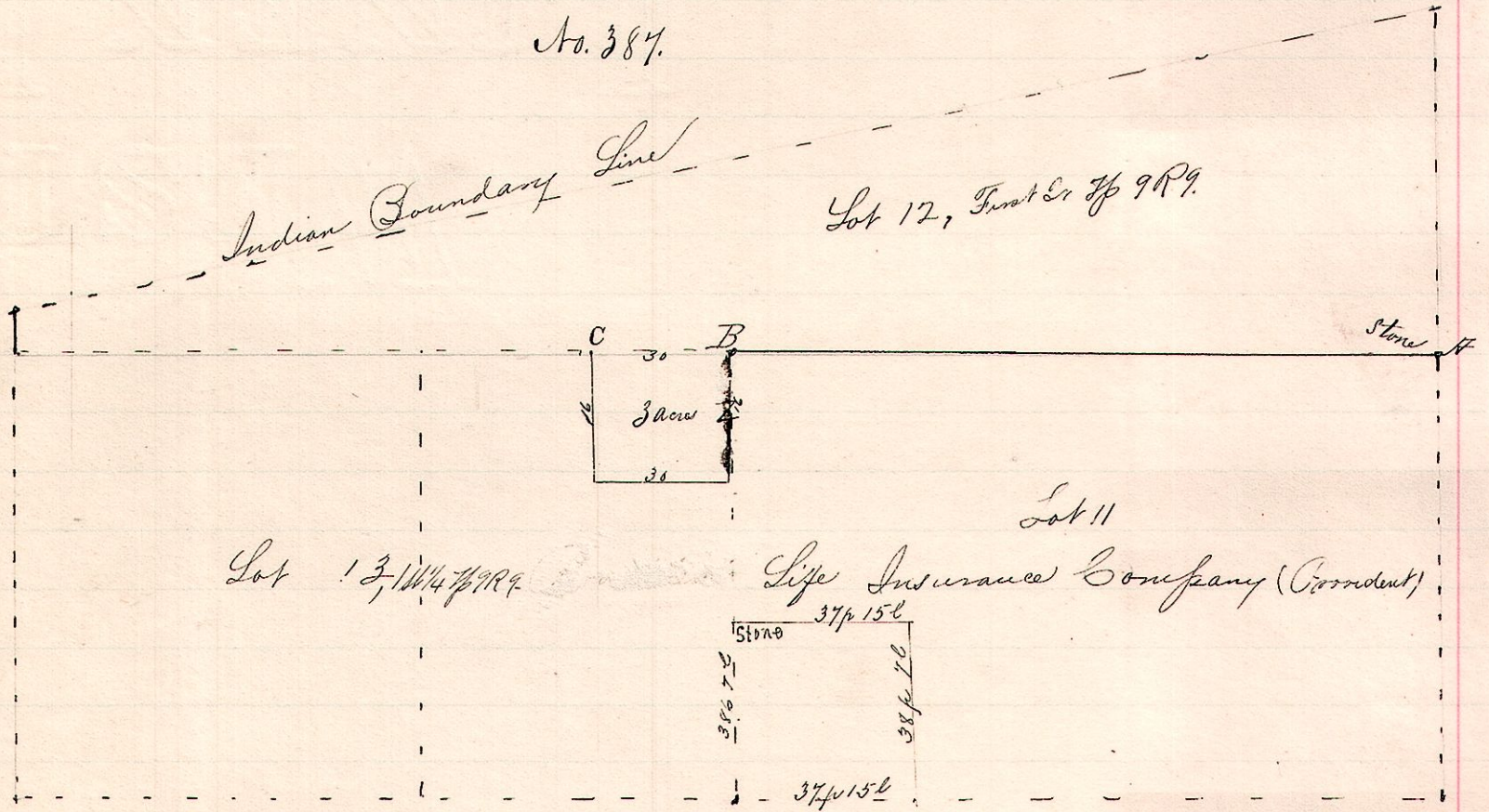
Notes
 "A" is a stone in the public road, at the northwest corner of Lot 23, 3d 2r 7p 9 R 7.
 "B" a stone at SW said Lot 23.
 "C" a stone on south line at the southeast corner of the 1/2 said Lot 23 S 86 1/4° E 81 rods 12 links from B.
 At "A" found stumps of 4 oak witnesses taken by Silcott in 1849; At "B" the Beech is still standing; At "C" the steeple is good.

Surveyed the above for Michell Shoup and John Chevelard, to determine the line AB, between lots 23 and 24.
 April 1, 1892.

Frank H. Gmet,
 County Surveyor.

No. 387.

9 9 1st 1/2



Surveyed the above for Frederick Stonebrook and William Munger, agent of the Provident Life Insurance Company, to determine the line AB, between Lots 11 and 12, 1st 2r 7p 9 R 9, along the Public road.
 April 5, 1892.

Frank H. Gmet,
 County Surveyor.