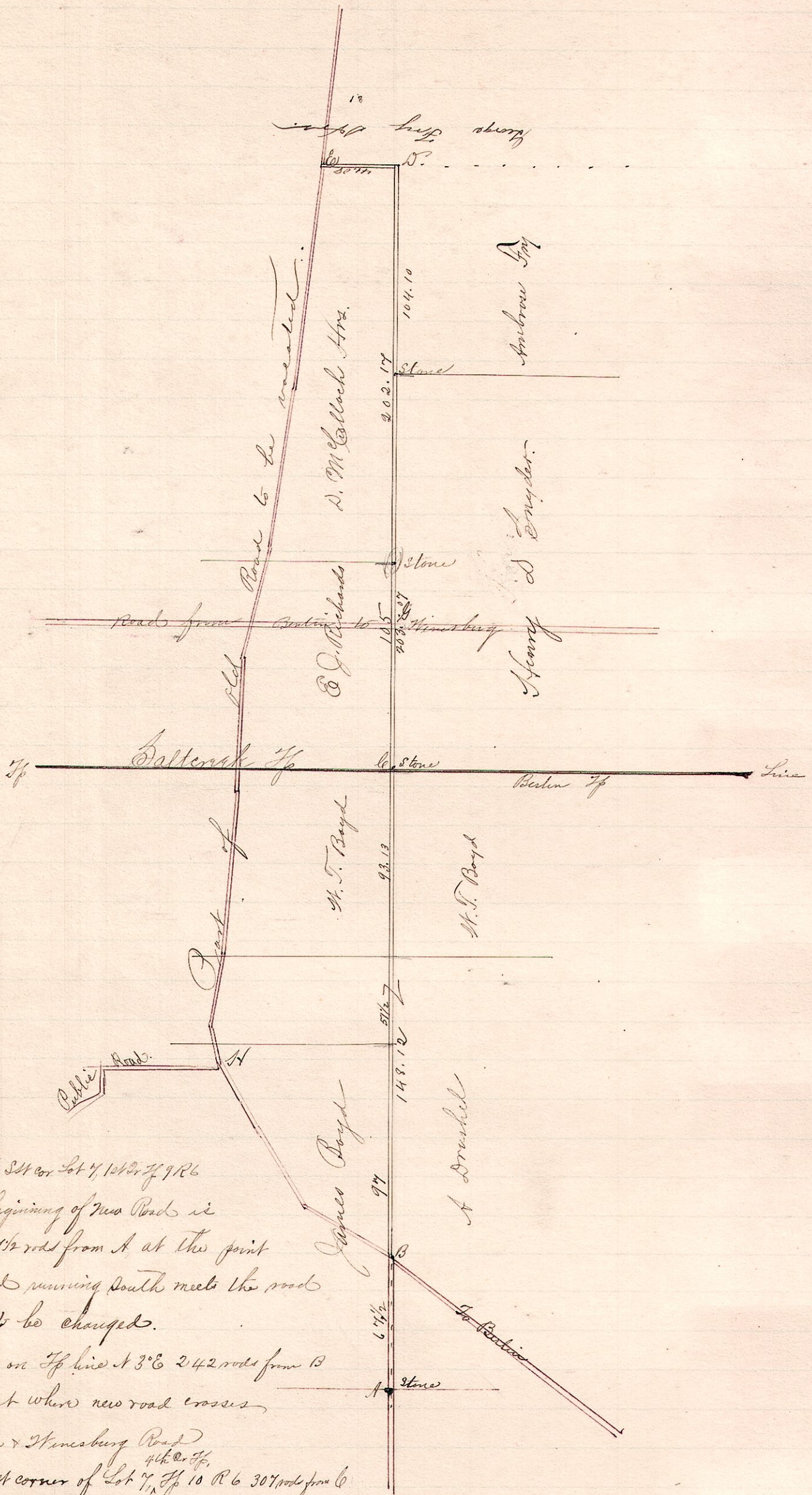


R 5 2nd 7th Lots
 6 9 4th $\frac{7}{9}$ $\frac{2}{3}$
 6 10 4th $\frac{9}{10}$ $\frac{8}{11}$ $\frac{7}{12}$ $\frac{13}{12}$

No. 376.

CR 201



A, stone at SW cor Lot 7, 10th Dr 9 R 6
 B, place of beginning of new Road is
 N 3° E 6 7/2 rods from A at the point
 County Road running south meets the road
 proposed to be changed.
 C, a stone on Tp line N 3° E 242 rods from B
 1/2 mile east where new road crosses
 the Benton & Hanesburg Road
 D, the NW corner of Lot 7, 10th Dr 10 R 6 307 rods from C
 E, the terminus of route a post in old road, on line between Lots 12th 13, 4th Dr 10 R 6
 N 87° W 41 rods S from D and witnessed by a Lime tree 20 in N 87° W 94 links.
 A-E is the part of old road to be vacated.

Viewers { William R. Donald Chairman { Harry C. Hill
 { Isaac Harpster { Josiah Lacey,
 { Chas. S. Hill Marker - Henry Lacey.

Principal Petitioners Henry D. Snyder & William T. Boyd
 Surveyed the above alteration of a County Road by
 Order of the County Commissioners Dec. 16, 1891.
 Frank H. Guet,
 County Surveyor.