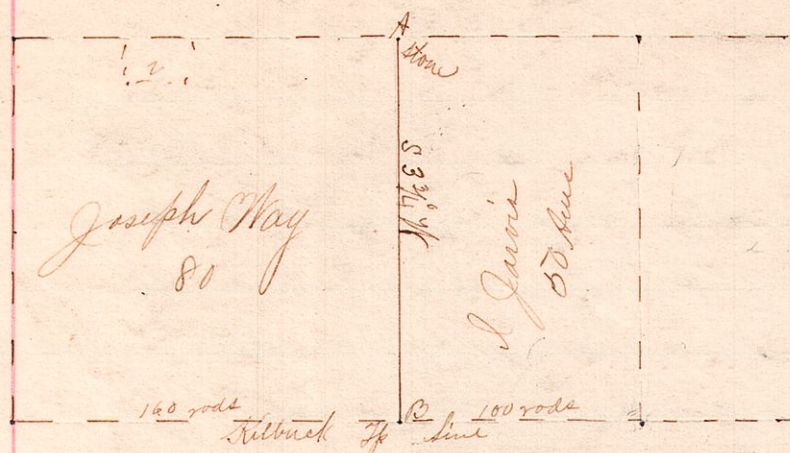


~ No. 344 ~

8 9 4 1/2 Sec 23 22 3/2

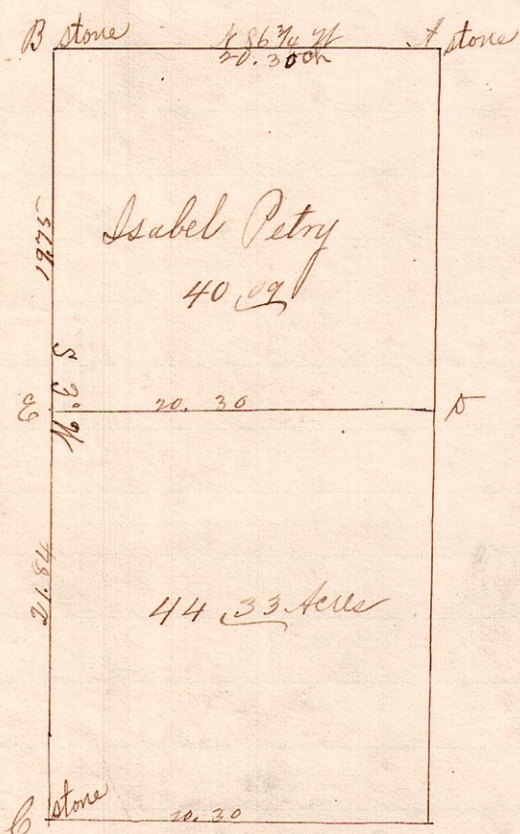


"A" is a stone at the center of
 Lots 22 and 23 4th 2d Tp 9 R 8.
 B, a stake on line between
 Monroe and Kilbuck Tps
 AB is the line between
 Joseph Way and I. Jarvis.

Surveyed the above for Joseph Way, Apr. 24, 1891.
 Frank H. Genet
 County Surveyor.

~ No. 345 ~

8 8 2 32 1/2



Notes.
 "A" is a stone the NE cor of the NW 1/4
 of the NW 1/4 of the SE 1/4 of Sec 2 T 5 R 8.
 Witness at A - Gum 20 N 40 E
 B is the center of said section 2.
 C is the SE cor. of said SE 1/4 of Sec. 2.

Surveyed at the request of
 John Petry jr, to determine the lines
 BE and ED.
 Aug. 12, 1891.

Frank H. Genet
 County Surveyor.

~ No. 346 ~

8 8 2 29 5/2

Sec 3

John Arnold
 40 acres

Sec 2
 SW 1/4

Isabel Petry
 84 acres

A stone

stone N 86 3/4 E

B stone

Sec 8

S. A. Arnold
 20 acres

Petry
 84 acres

Sec 9
 NW 1/4

Notes
 "A" is a stone at the cor. of
 sections 2, 3, 8, 9, of T 5, R 8.
 "B" is the Br stone of Secs. 2 & 9.
 Surveyed the above to determine
 the line AB by request of
 Isabel Petry.
 August 12, 1891.

Frank H. Genet
 County Surveyor.