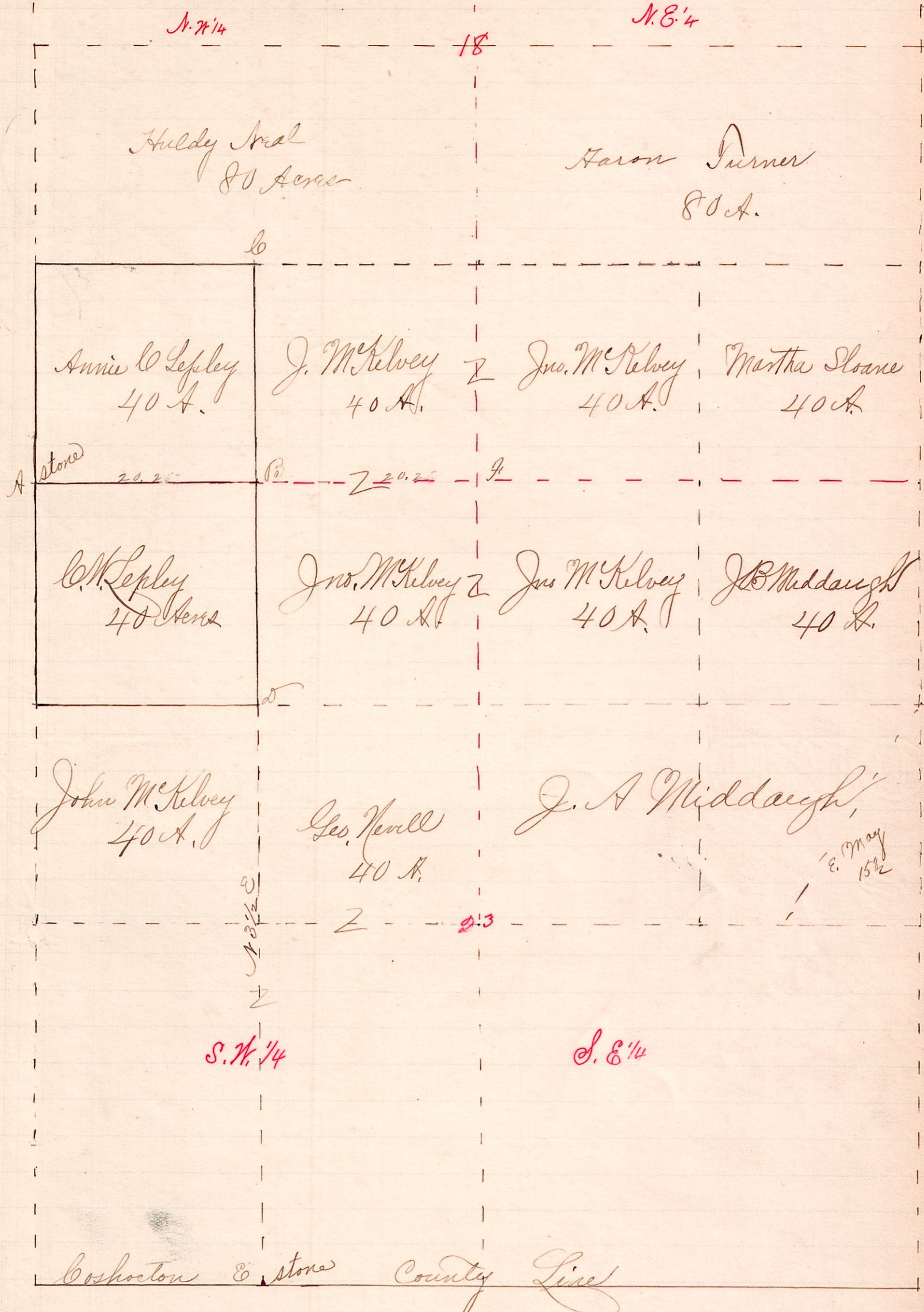


No. 325

R 7p Sec 2r Pt
8 8 18 SW SW
23 NW NW



Notes

C, is a stone on County Line.
B a recognized corner.
Witnesses at A.

Chairmen:
Frank Lefley

Marker, D. D. Sharp

- 1. Block 24 N 78° 20' W
- 2. 7/8 Oak 4 N 81° 20' W

Surveyed the above for C. Lefley to determine the lines AB & BC. Began at A & C a stone on County line, thence N 78° 20' W to B, a recognized corner. Took witnesses at A on the line. Run the line AB to A.
May 7, 1891.

Frank A. Genet,
County Surveyor