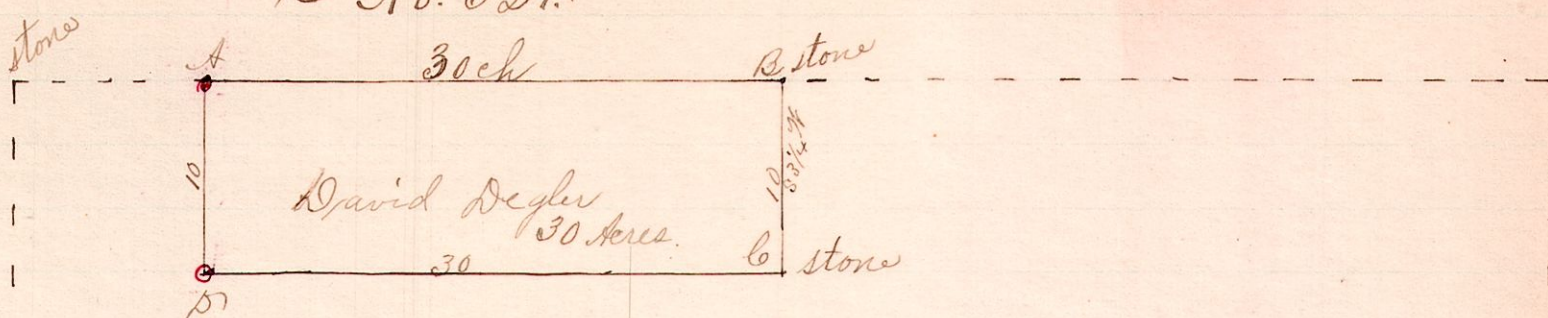


R 77 Sec 27 Pt
6 9 7 SW NE cor

~ No. 321. ~



Moses Finley Hairs
13 6 Acres

S.E. 27 Sec 7 7/8 9 R6.

Notes.

Planted stones at A and D.

Witnesses

- Hickory 18 North 33
- A B Walnut 5.1898 33
- Sugar 15 S 88 1/2 W 24
- D. - B. Walnut 10.1898 86 1/2

Chairmen.

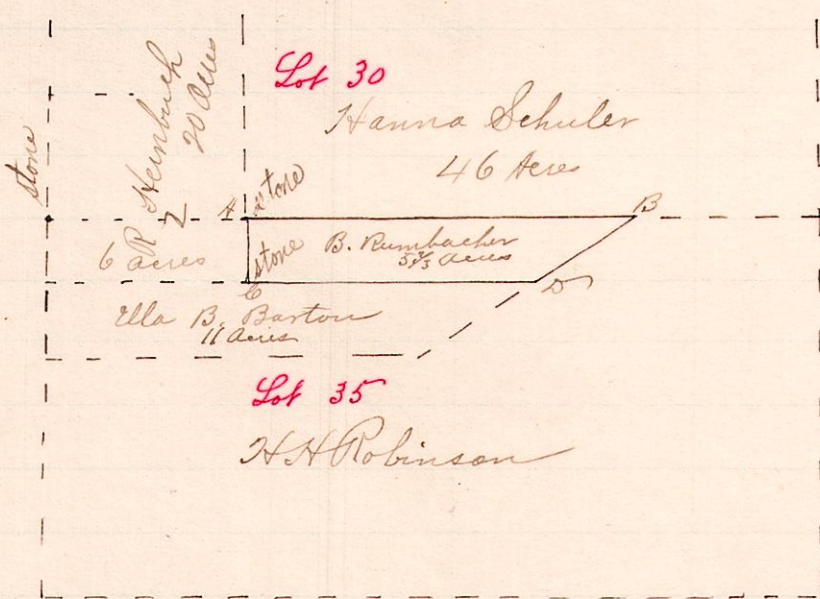
- David Degler, Jr.
- Charles J. Genet.
- Armanus Marker
- W. P. Finley.
- Ross, Finley.

Surveyed the above for the purpose of determining in the lines A D and C D. Also the corner A and D, for Rose Finley. April 7, 1891.

Frank H. Genet,
County Surveyor.

~ No. 322. ~

7 9 lot Lots 30 & 35



Surveyed the above for B. Rumbacher and Hanna Schuler for the purpose of determining in the line A B and the area of A B D C. April 31, 1891.

Frank H. Genet,
County Surveyor.