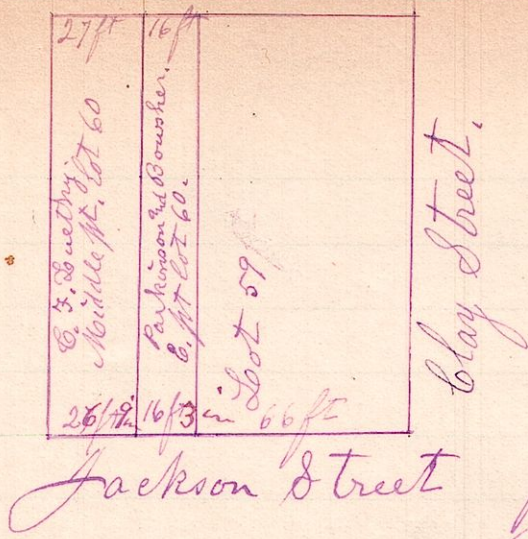


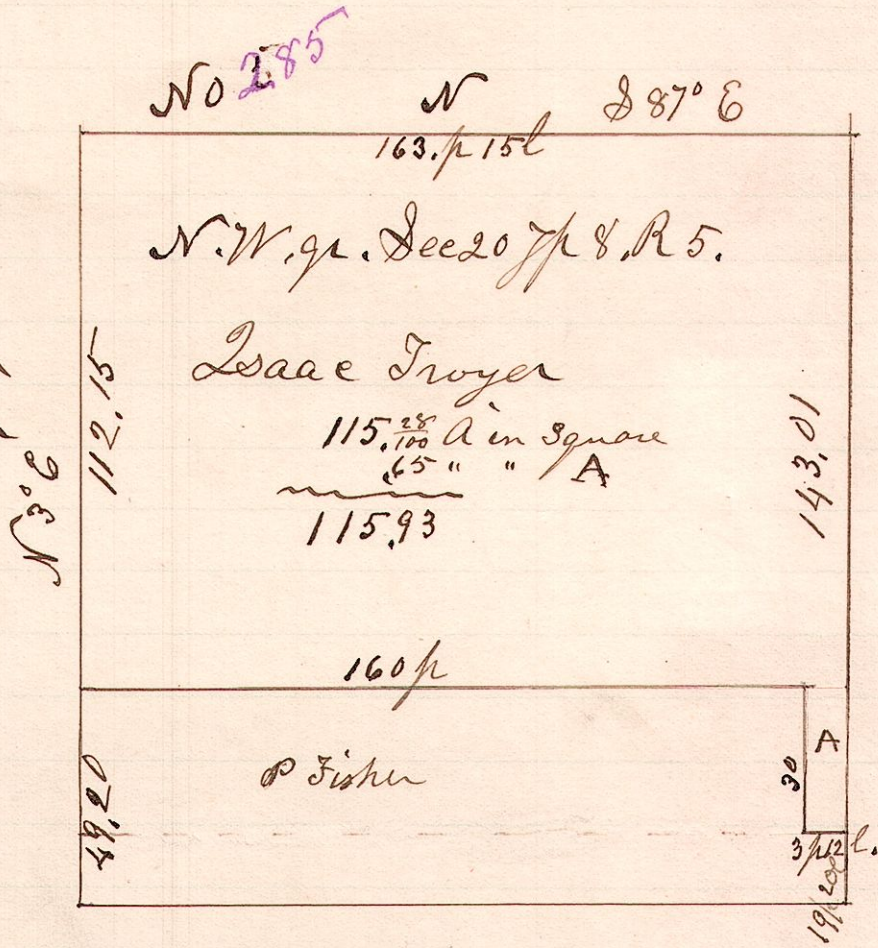
No 284



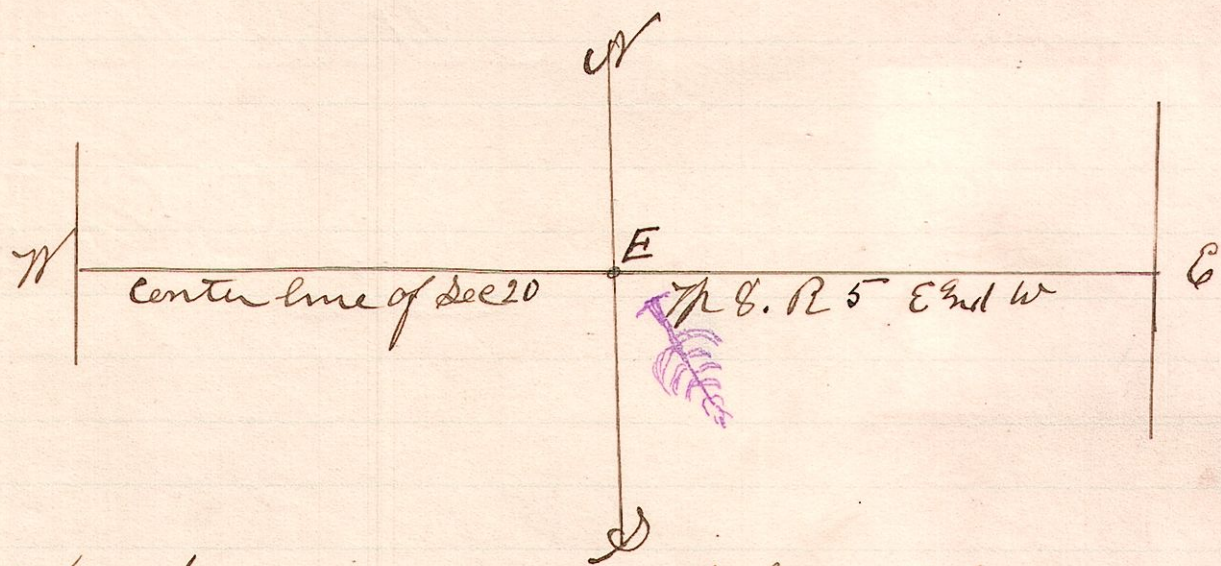
Measured to find the north and south lines of 16 feet off the east side of Inlot in Millersburg township 60. for Parkinson and Bowsher; Also 27 feet immediately west of same for C. F. Suethy.
 June 12th 1890
 H. H. Robinson
 Co Surveyor.

A survey made for Isaac Troyer
 June 13th 1890.

H. H. Robinson
 Co Surveyor



No 286



Established the center corner of Sec 20 T 8 R 5 for Peter Fisher and others by running line from W to E, stone corners, and took for witness at E, Bitter Elm
 20th S 57° E, 48 l.
 June 13th 1890.
 H. H. Robinson
 Co Surveyor.