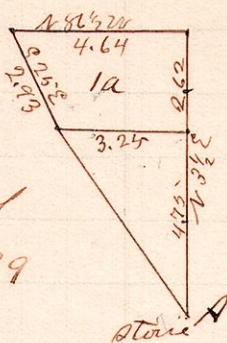


R Tp 7<sup>th</sup> Lot R4  
9 9 1st 12 E

No 278



A is the south east corner of Lot 12 in the 1st 2<sup>nd</sup> Tp of Tp 9 R 9

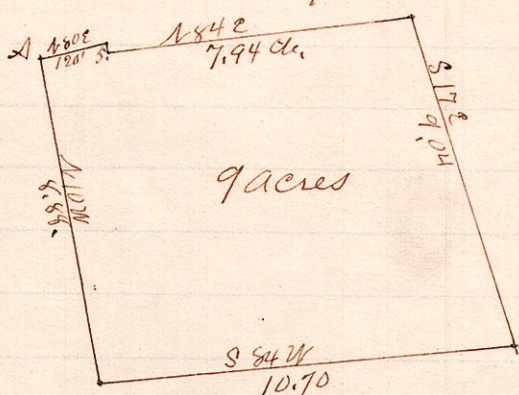
Lot for District No 2 Knox Tp.

Surveyed the above for the Board of Education of Knox Tp, Holmes County Ohio May 15, 1890

W. S. Hanna  
County Surveyor

R Tp Sec 2<sup>nd</sup>  
15 19 24 NE

No 279



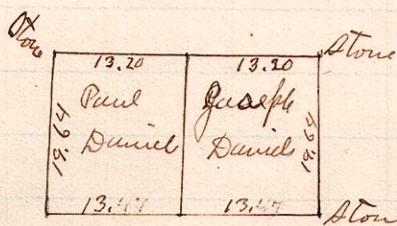
A is in the center of the public road on the south line of Lot 119, in the Village of Nashville, Ohio,

Survey made to set off the election of the widow of A. Mellott deceased under "will" - the same being in the N.E. 2<sup>nd</sup> of Sec 24 Tp 19 R 15

W. S. Hanna  
County Surveyor

No 280

R Tp Sec 2<sup>nd</sup> 2<sup>nd</sup>  
8 8 6 S.W.S.E.



S.E. 2<sup>nd</sup> of S.W. 2<sup>nd</sup> of Sec 6, Tp 8 R 8

Surveyed the above for Paul Daniel May 16, 1890

W. S. Hanna  
County Surveyor

Ohio, June 2, 1890