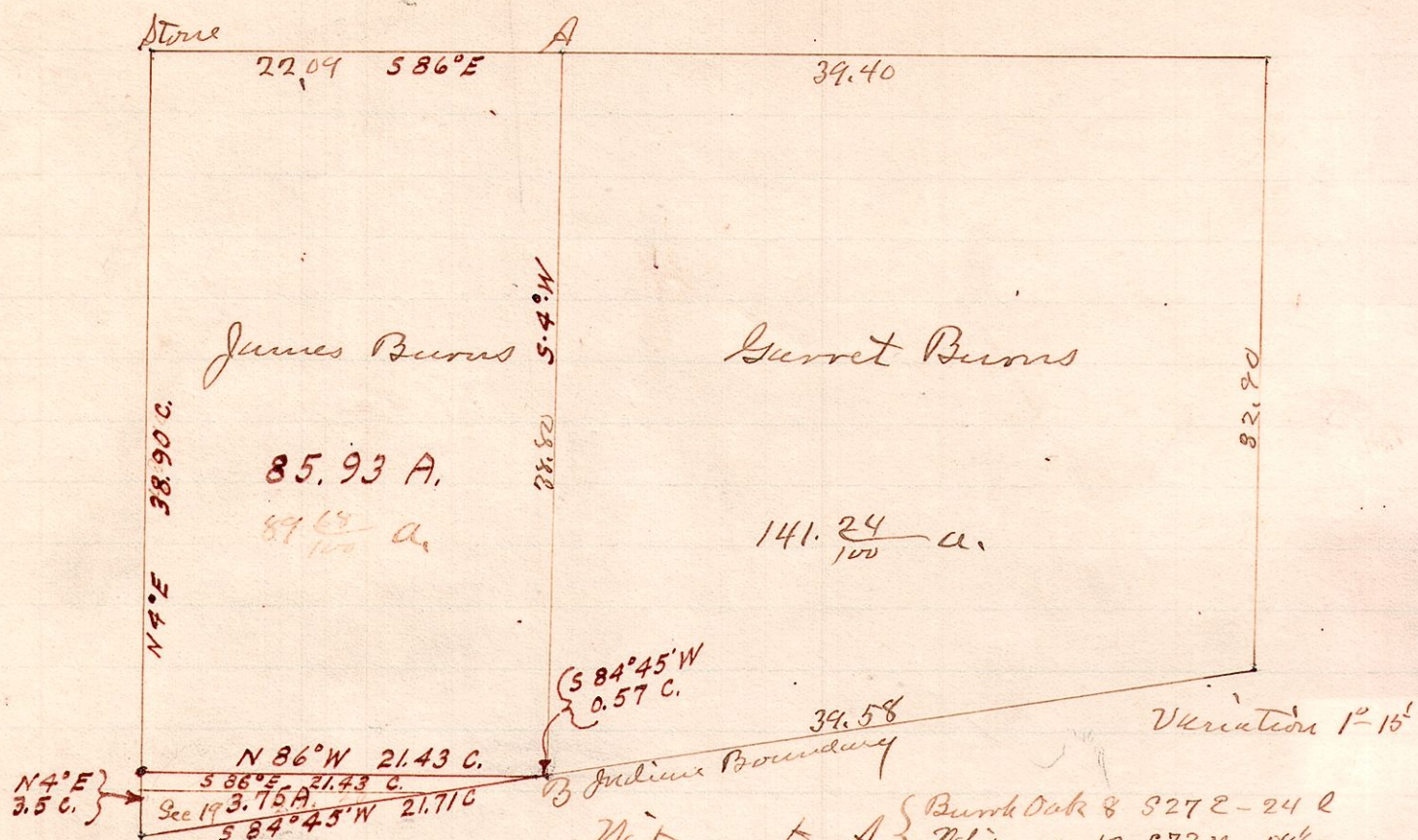


No 255

R Tp Sec 2r
13 13 18 SW
13 13 19 NW



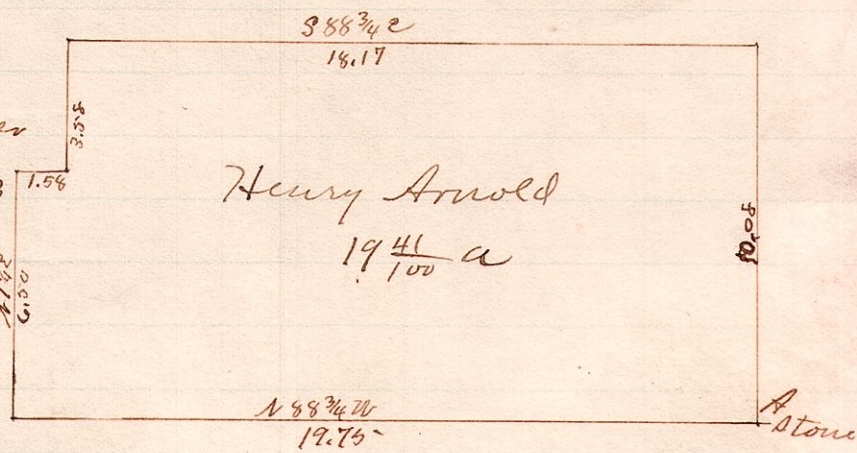
Witness to A }
" " B }
Burr Oak & 3272-242
White " 12 57324-5824
Elm " 16 431224 56"
Hick " 15 N 25E 79 1/2"

Surveyed for James Burns & Garret Burns Feb. 26, 1890
W. S. Hanna
County Surveyor.

No 256

R Tp Sec 2r Pt
13 13 11 SE SE

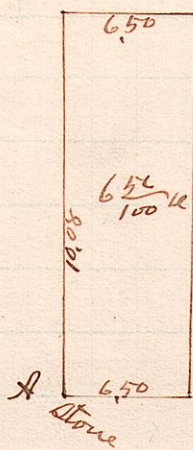
"A" is a stone at the S.E. Corner
of the S.E. 2r of Sec 11 Tp 13, R 13



Surveyed for Henry Arnold March 6, 1890
W. S. Hanna
County Surveyor.

No. 257

R Tp Sec 2r Pt
13 13 12 SW SW



"A" is a stone at the S.W. Corner of
the S.W. 2r of Sec 12 Tp 13 R 13

Surveyed for Henry Arnold March 6, 1890,
W. S. Hanna,
County Surveyor.