

No 252

R Tp Sec 2r
15 20 26 SE

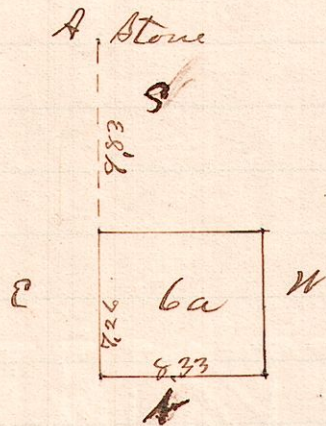


"A" is a stone at the south east corner of Section 26 Tp 20 R 15
"C" is Station 18 of the old Shearer Mill privilege.
Surveyed Feb. 11, 1890

W. S. Hanna,
Co. Surveyor.

No. 253

R Tp Sec 2r
6 9 18 NW



"A" is a stone at the S.E. corner of the E 1/2
of N.W. 2r of Sec 18, Tp 9, R 6.

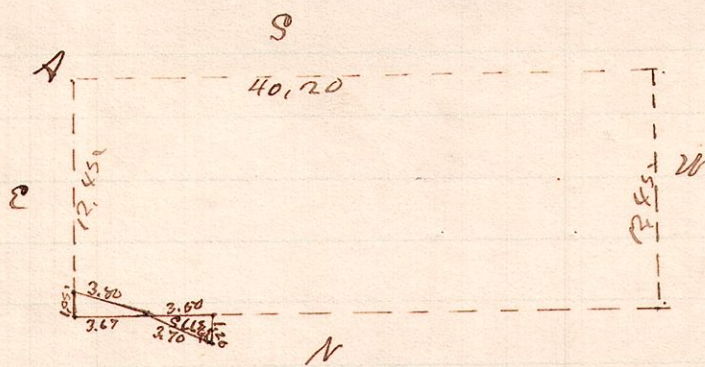
Variation 3° 25'

Surveyed for D. J. Yoder and John Rudy Feb. 17, 1890.

W. S. Hanna,
County Surveyor.

No 254.

R Tp Sec 2r
6 9 13 SW



A is S.E. corner of SW 2r of Sec 13, Tp 9 R 6
Surveyed for David J. Yoder Feb. 17, 1890

W. S. Hanna,
County Surveyor.