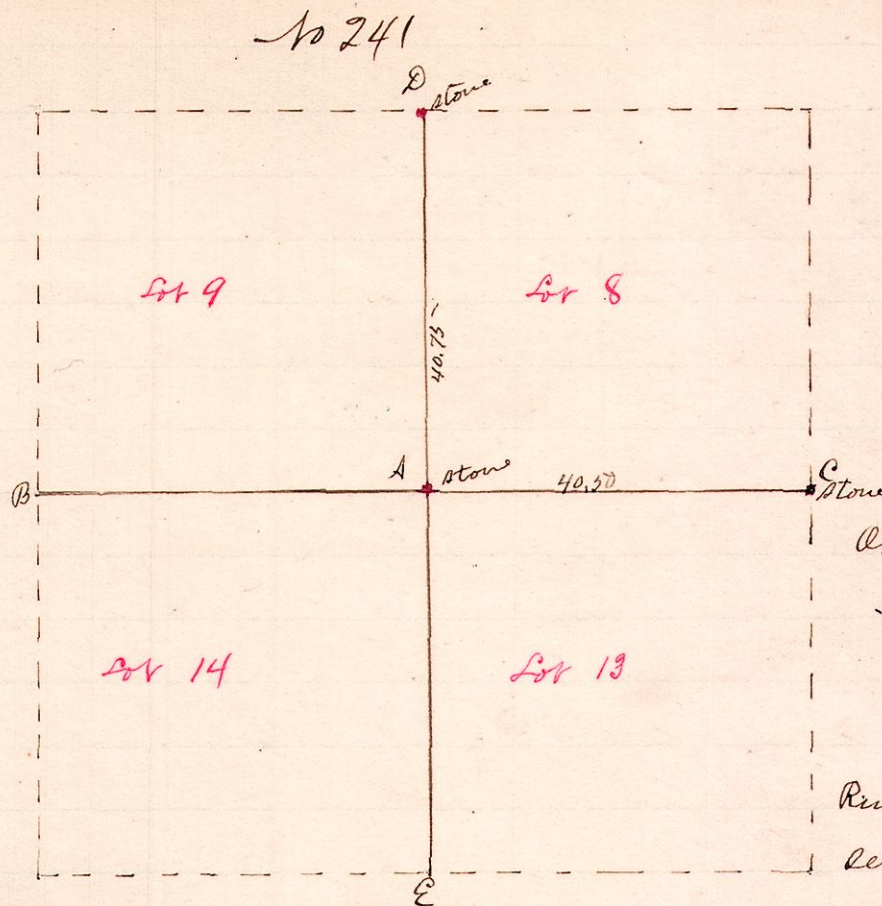


R Tp 2nd Tp Lot
6 9 1st 13/14



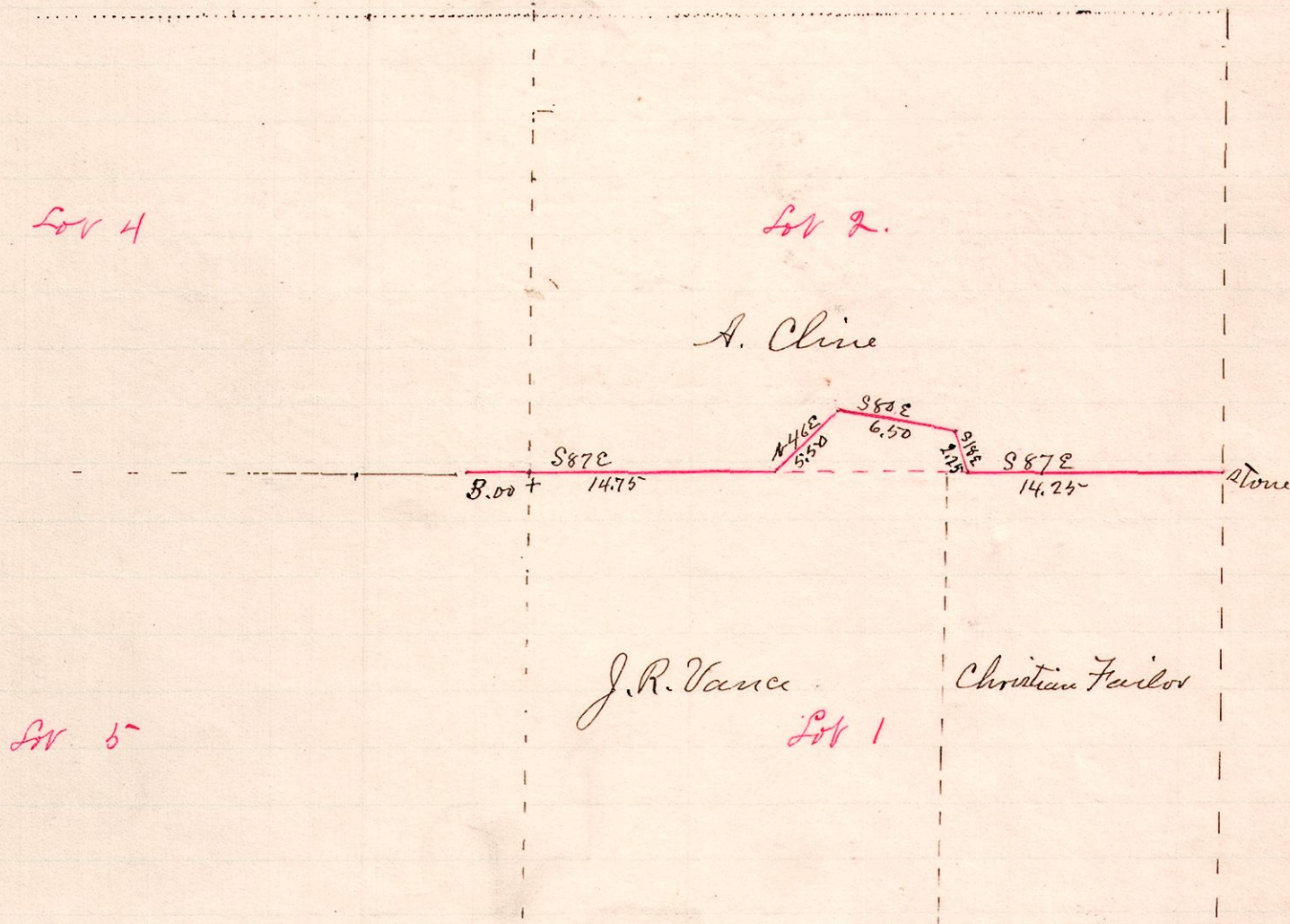
Original Witness at B, N. Oak
S.E. of corner still standing

Run the lines CB & DE and
set a stone at A"

Surveyed the above for James Boyd et al, Nov: 26, 1889.
W.S. Hanna, Co. Surveyor,

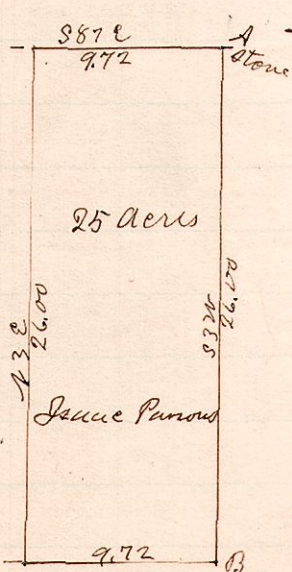
No. 242

R Tp 2nd Tp Lot
9 9 2nd 4+5
TR 266



John A. Ahlman and Harry Swaggart, Chain carriers.
The line of a Township Road, surveyed for the Trustees of
Knox Township, December 3, 1889
W.S. Hanna Co. Surveyor,

R Tp 2nd Tp Lot R6
9 9 2nd 4 E



"A" is a stone at the N.E. corner of
Lot 4, 2nd Tr Tp of Tp 9 R 9

Surveyed the Line A B for Isaac
Parsons et al December 3, 1889
W.S. Hanna
County Surveyor