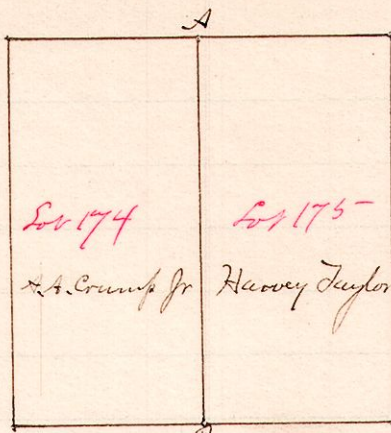


No 238.

R Tp Sec Lots
7 9 12 174
175

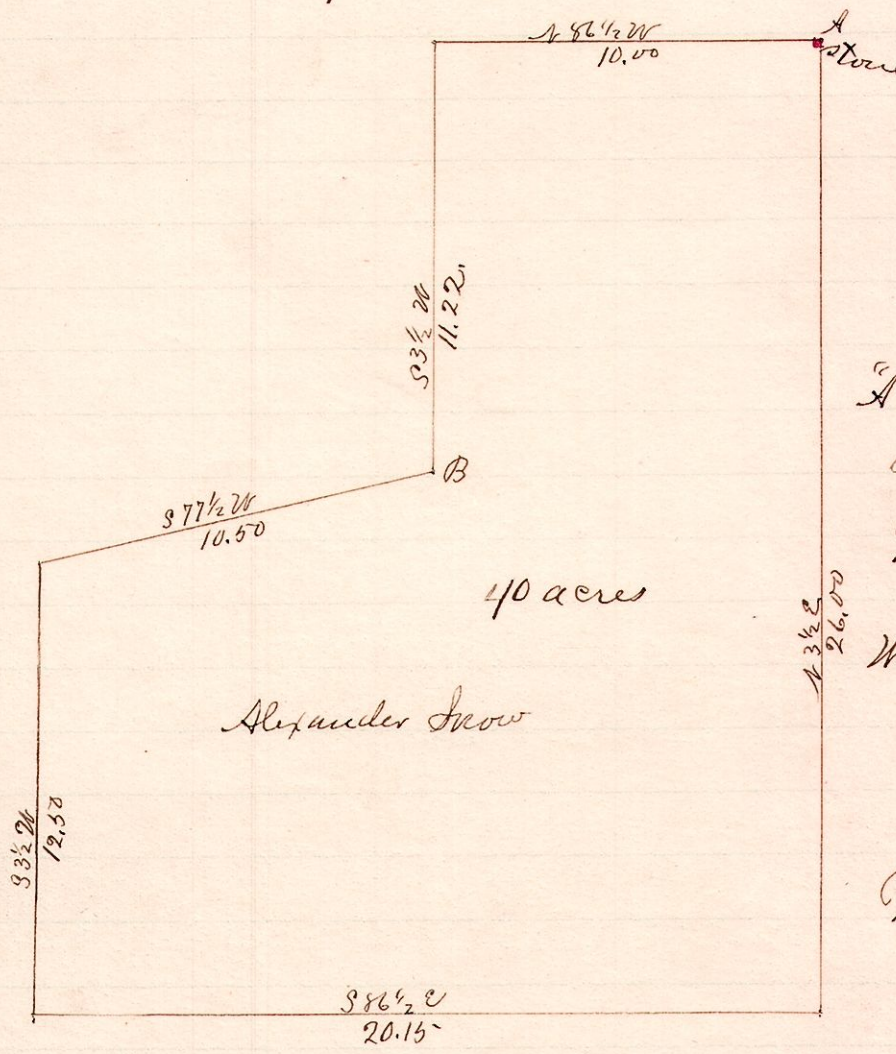


Surveyed the line AB between lots 174 and 175 for Harvey Taylor and Dr. A. Crump Jr. Oct. 23, 1889

W.S. Hanna County Surveyor.

No 239.

R Tp Sec 2r
8 8 24 1E



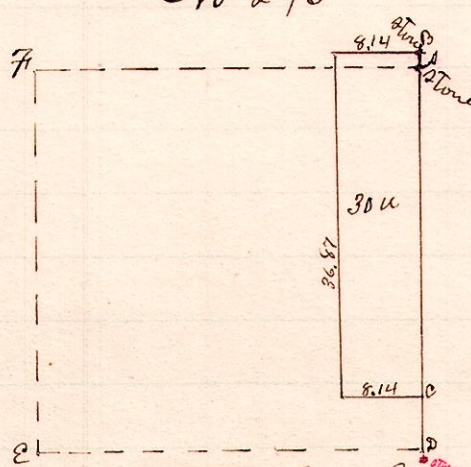
"A" is a stone at the N.E. corner of section 24 Tp 8, R 8.

Witness to "B"
Black Oak, 20 S 27 E, 13 links
Chain carrier.
J. L. Sepley } sworn,
W. M. Taylor }

Surveyed the above for Alexander Snow, Nov 7, 1889
W.S. Hanna, Co. Surveyor.

No 240

R Tp Sec 2r
5 8 20 5E



From A to D is 41.00 chur.
" A to B is 2.47 "
" A to C is 34.40 "
"A" is a stone at the N.E. corner of S.E. 1/4 of Sec. 20 Tp 8 R 5

Variation 3 1/4 degrees to right.

Surveyed for Nicholas Row and Samuel J. Burger Nov 11, 1889
W.S. Hanna, Co. Surveyor.