

No 236.

R 7/2 Sec 2r Pt
7 9 19 1.5 2

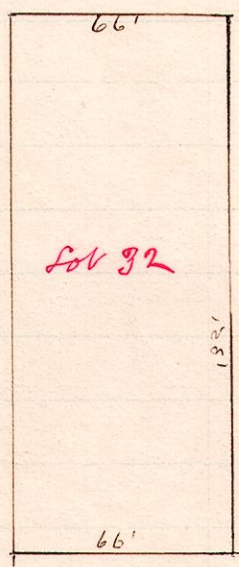


D.L. 103 Millersburg
A is 10 chains² or 80 links south of
the north west corner of the north east
quarter of Section 19 township 9 range 7

The above is a correct plat of the lands owned by the above named
parties in the incorporated Village of Millersburg, Ohio,
Sep. 16, 1889
W.S. Hanna, Co. Surveyor.

No 237

R 7/2 Sec 32
7 9 12 32



Began at standard stones set in
1871 by S. Robinson in corporate limits of
village and found the line as shown

Surveyed for D.G. Newton, October 15, 1889.