

No 233

R 7p 2p 1st Pt
9 9 2nd 4 Middle

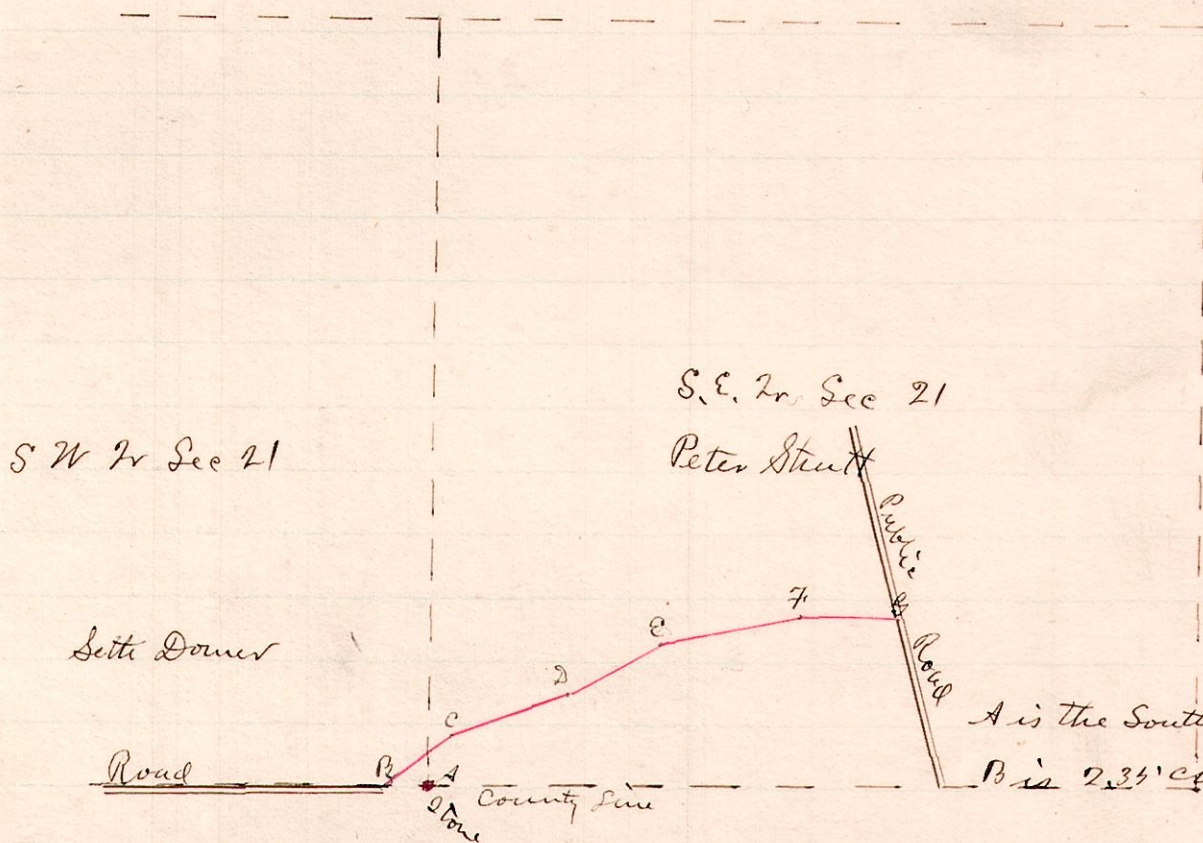


"A" is a stone at the N.W. corner of Lot 4 in 2nd 2p of 9 R 9
Set a stone at B

Surveyed for Joseph M. Harris Aug 29, 1889
W. S. Hamud
County Surveyor,

No 234.

R 7p Sec 2r
5 6 21 5N
5E



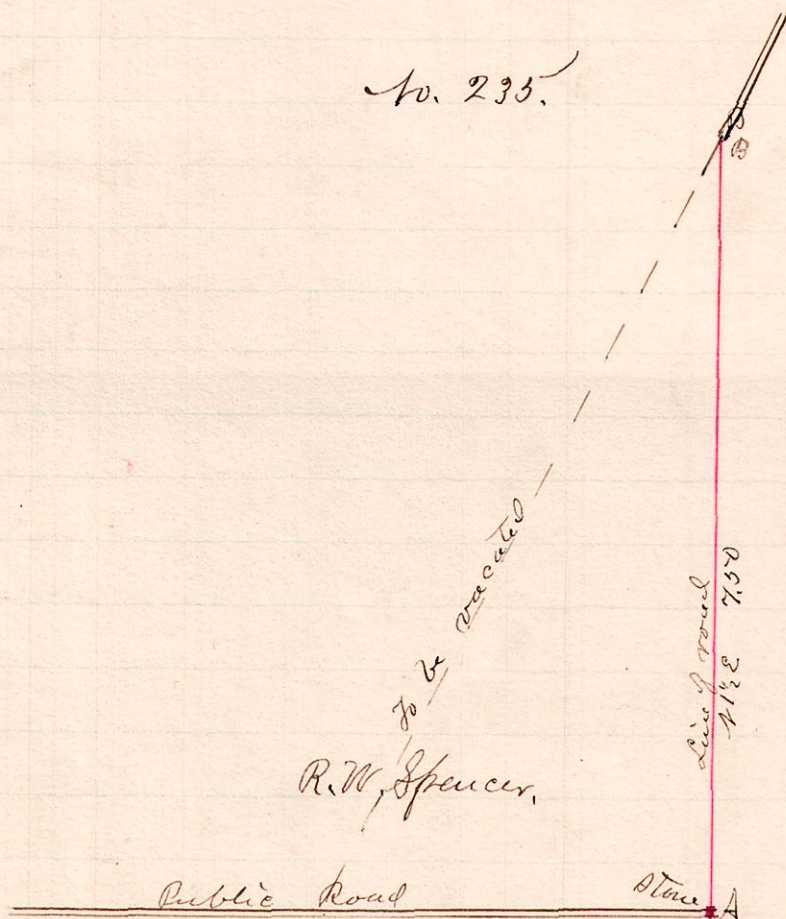
Description
B. N 56 E 2.96 + 1.51 to C
C N 69 1/2 E 6.38 to D
D N 63 E 5.50 to E
E N 79 1/2 E 7.34 to F
F S 89 E 5.55 to G

A is the South 7r Corner of Sec 21
B is 2.34 chains west of A

County Road petitioned for by J. P. Fair et al
Surveyed by order of Commissioners Sept 12, 1889.
W. S. Hamud, Co. Surveyor.

No. 235.

R 7p Sec 2r
12 15 28 1N



"A" is the S.E. corner of the N.W.
2r of Sec 28 7p 15 R 12

R. W. Spencer.

Alteration of County Road petitioned for by R. W. Spencer et al.
Surveyed by order of Commissioners Sep 17, 1889
W. S. Hamud, Co. Surveyor