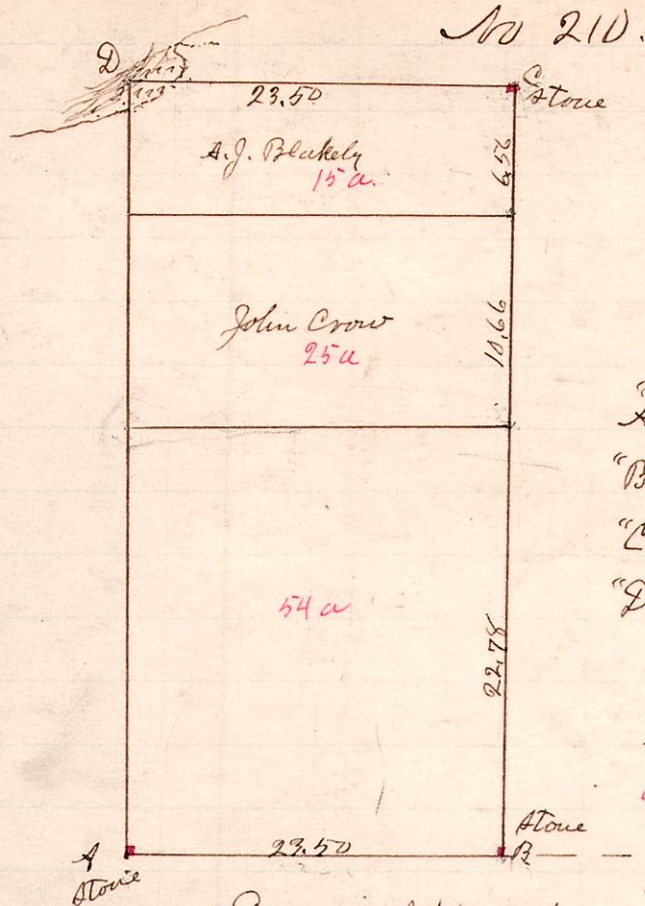


R 7p Sec 2r
14 18 30 SW

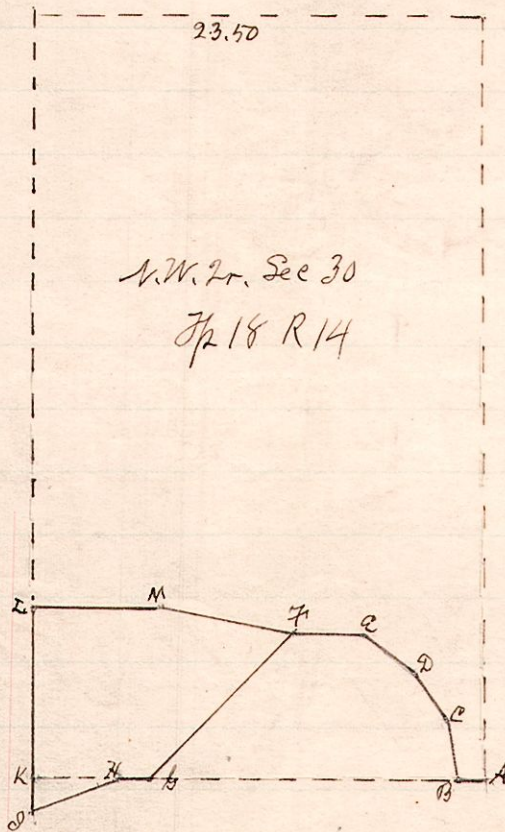


"A" is a stone at the S.W. corner of Sec 30
 "B" is the south E corner of Sec. 30
 "C" is a disputed stone at the center of said section.
 "D" is the north west corner of the south west quarter of section 30 and is in a swamp at the edge of the lake.
 94 acres in 2r Sec. 1. Short 66 acres.

Surveyed the above for John Crow et al May 20, 1889
 W.S. Hanna, Co. Surveyor.

No. 211.

R 7p Sec 2r
14 18 30 NW



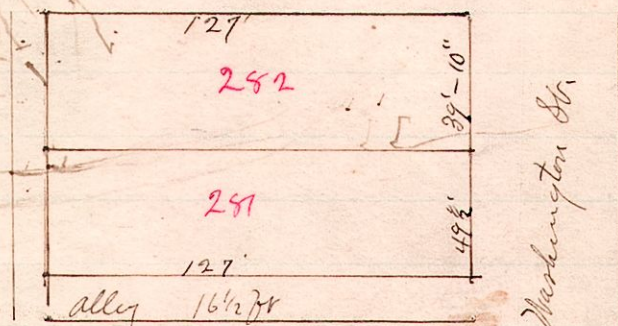
Notes.

- A is a stone at the S.E. Cor. of the Tr.
 - A N 1/4 W 1.19 ch. to B
 - B N 8 1/2 W 3.20 " to C
 - C N 38 W 3.00 " to D
 - D N 52 W 3.00 " to E
 - E N 88 1/2 W 3.66 " to F
 - F S 44 W 10.30 " to G
 - G N 88 1/2 W 1.32 " to H
 - H S 68 1/4 W 5.00 " to I
 - I N 1/4 E 10.18 " to L
 - L S 88 1/2 E 6.75 " to M
 - M S 82 E 7.09 " to F
- The bearing and distance between stations D and E are omitted from Mr. Carrs deed and the same were determined from tables
 From I to K is 1.85 ch.
 From H to K is 4.64 "
 "K" is the south west corner of the north west quarter of Sec. 30 and is in a swamp.

Surveyed the above for J. Carr, May 20, 1889
 W.S. Hanna Co. Surveyor

No 212

R 7p Sec 2r
7 9 12 281 282



Surveyed the above lots for Melty Jacobs to determine the north boundary of Lot 282. May 27, 1889
 W.S. Hanna, Co. Surveyor.