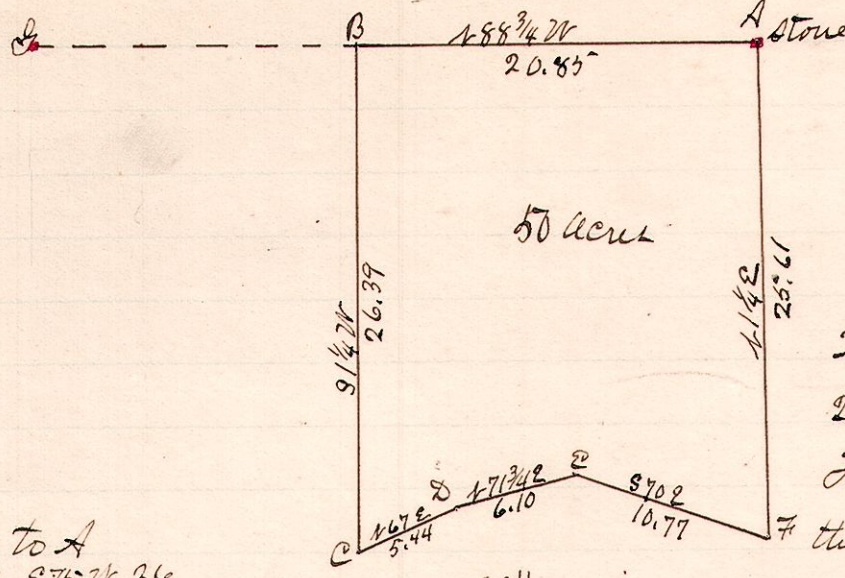


R 7<sup>th</sup> Sec 2<sup>nd</sup> Pt  
15 19 23 4<sup>th</sup> NE

No 166



"A" is the N.E. Corner of the N.W. 1/4 of Sec 23. T<sup>19</sup> R 15.  
The line from C to F is along the center of a public road.

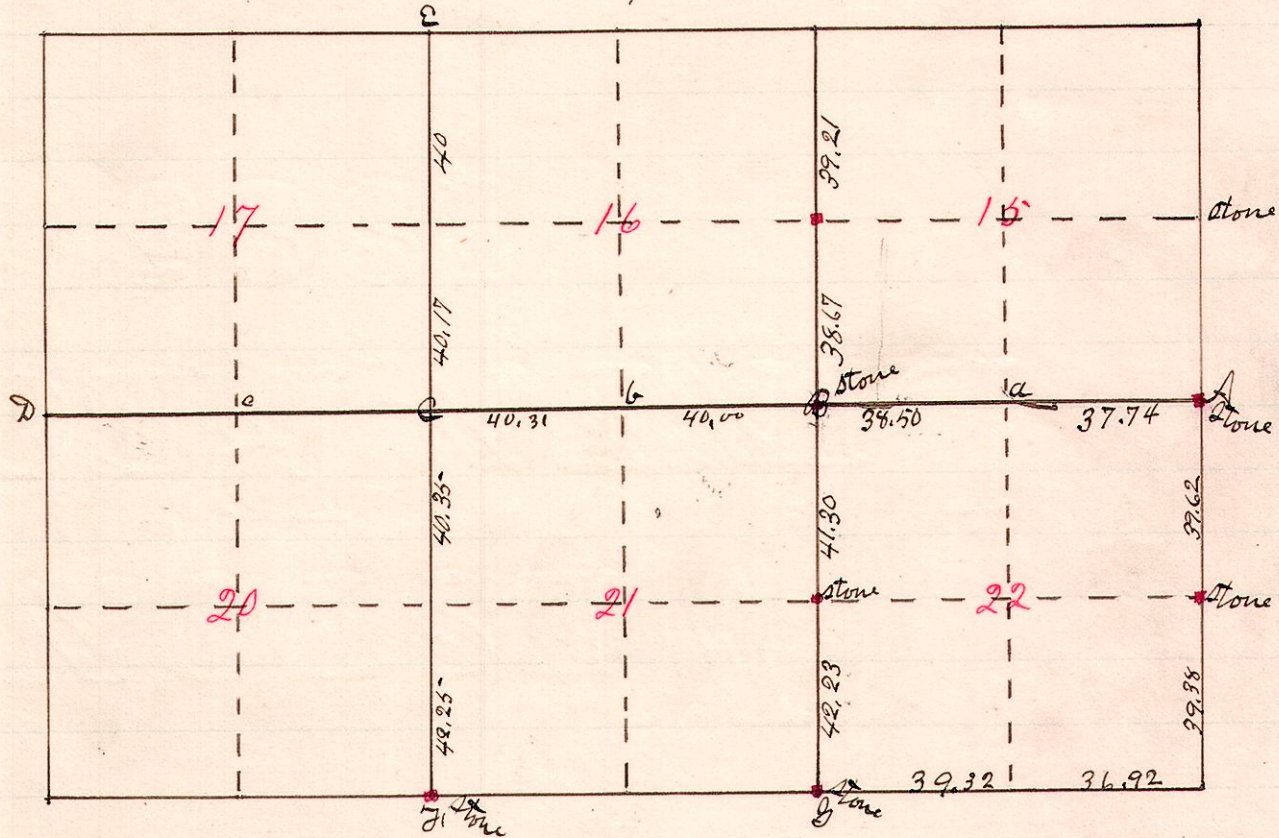
Witnesses to A  
{ T<sup>19</sup> R 15 Sec 23  
{ T<sup>19</sup> R 15 Sec 31

Jan. 8, 1889

"D" is the north west corner of the quarter.  
Surveyed the above for <sup>John</sup> Shaffer on  
W. S. Hanna  
County Surveyor

No. 167.

R 7<sup>th</sup> Sec  
15 19 22



Found stump of original witness at B, found roots of other witnesses therefrom by digging, then established corner and by excavating for stone found stake set by former survey I then established corner and set stone thereat. It will be noticed that Sec 22 is irregular.

Then run line from B to A on a bearing of  $S 84^{\circ} E$  and found original witnesses at "a" - two white oaks well marked and set stake.

The line A D does not run on a uniform bearing.

AD is the line between Washington Township on the north and Knox Township on the south.

Surveyed the above for Frank Miller et al January 9<sup>th</sup> & 10, 1889  
W. S. Hanna  
County Surveyor