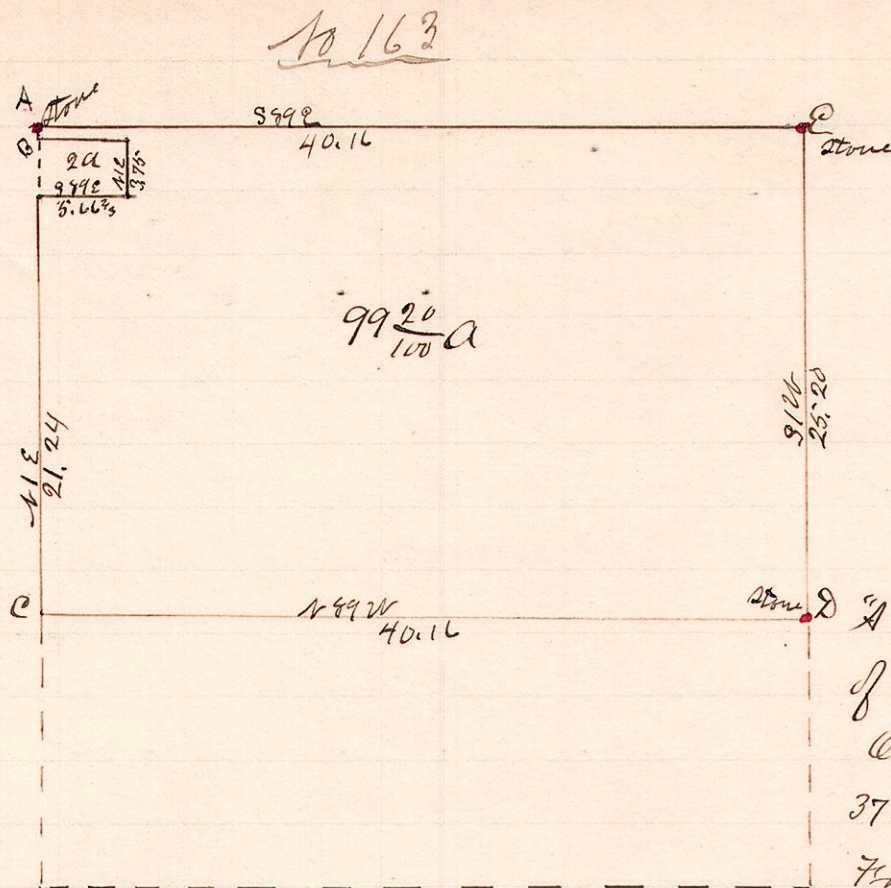


R 1/2 Sec 26 Pt
14 18 26 SW 1



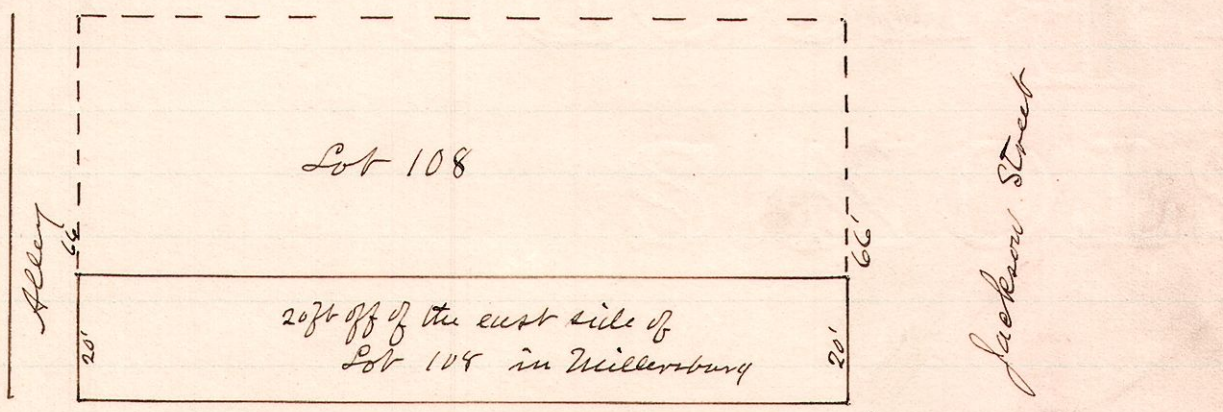
"A" is a stone at the N.W. Cor
of the S.W. 1/4 of Sec 26 Tp 15 R 14
Original witness W.O. 33224
37 links still standing at A
From A to B is 21 links

Witnesses: E B.O. 9 N 8 W - 28 1/2
" D { W.O. 17 N 6 1/2 W 38
" W.O. 21 N 14 E 41
" C White Walnut 9 S 27 1/2 E - 37

Surveyed the above for Thomas W. Lee January 3, 1889
W.S. Hanna
County Surveyor

No 164

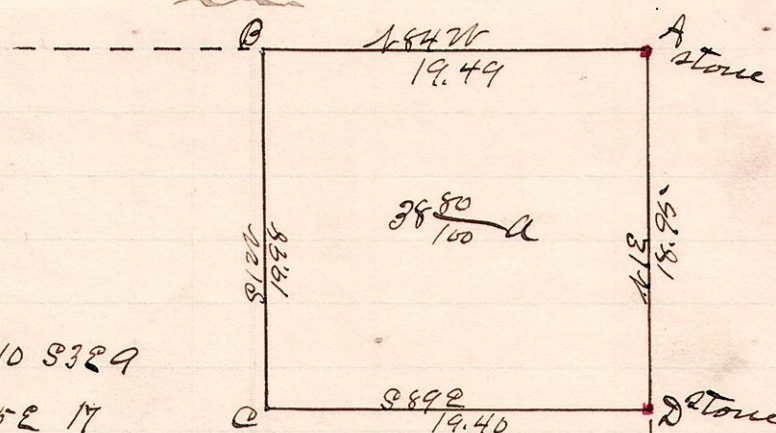
R 1/2 Lot
7 9 108 Millersburg



Surveyed the above for J.C. Maxwell and J.R. Mackey
Jan 7, 1889
W.S. Hanna
County Surveyor

No 165

R 1/2 Sec 22 Pt
15 19 22 NE 1/2



Witnesses to B Hickory 10 3329
" to C W.O. 545 E 17
"A" is the N.E. corner of Section 22, Tp 19, R 15

Surveyed the above for Amos Parsons, Jan 11, 1889
W.S. Hanna
County Surveyor