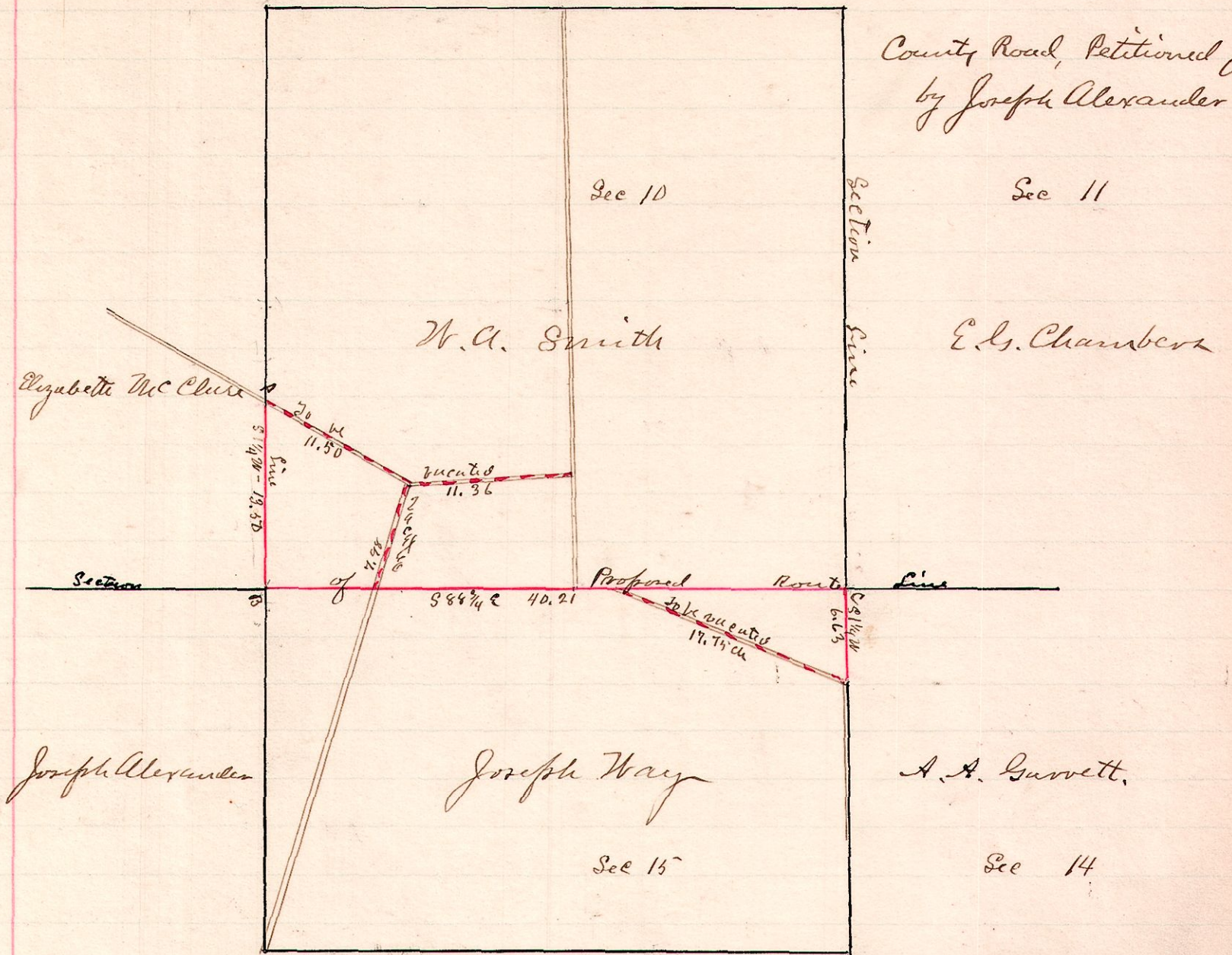


No. 157

R 7 1/2 Sec
14 17 18 & 15

County Road, Petitioned for
by Joseph Alexander et al.



"A" is the beginning point of said Road and is on the west line of the S.E. 1/4 of Sec 10 T. 17 R. 14
A deep ravine between A & B will need bridging and fill.
"C" is the corner of Sections 10, 11, 14 & 15 and is marked by a stone.

Witness to "C" Cherry 18- 1802-17

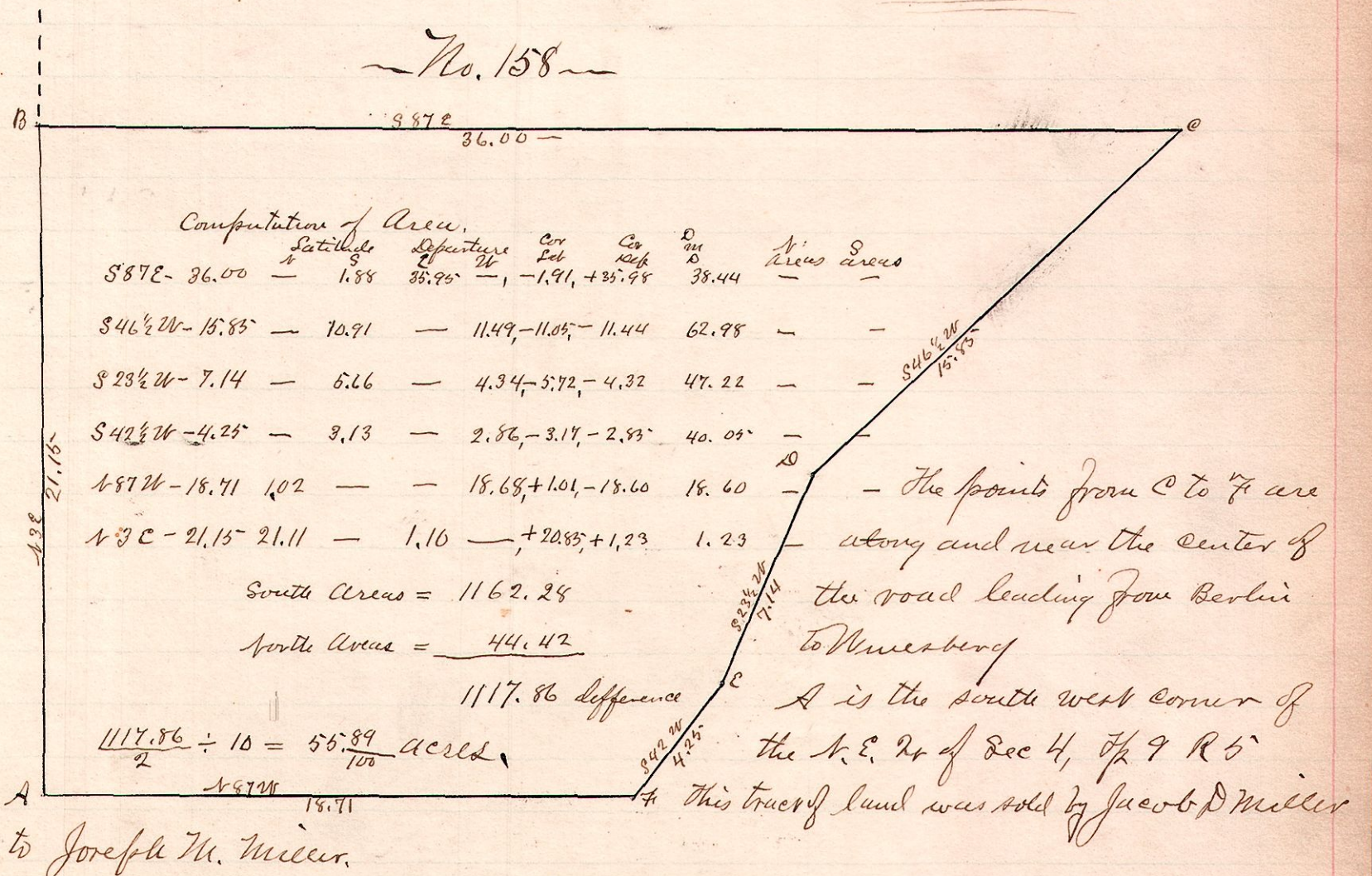
Jacob Hart
R.H. Sidle
Ed. G. Chambers

Newton Doty & J.C. Hanna, Chaimmen.

Surveyed by order of County Commissioners Sept. 13, 1888
W.S. Hanna
County Surveyor

No. 158

R 7 1/2 Sec 2 & R 4
5 9 4 A.C. S.M.



Surveyed Dec. 12, 1888

W.S. Hanna
County Surveyor