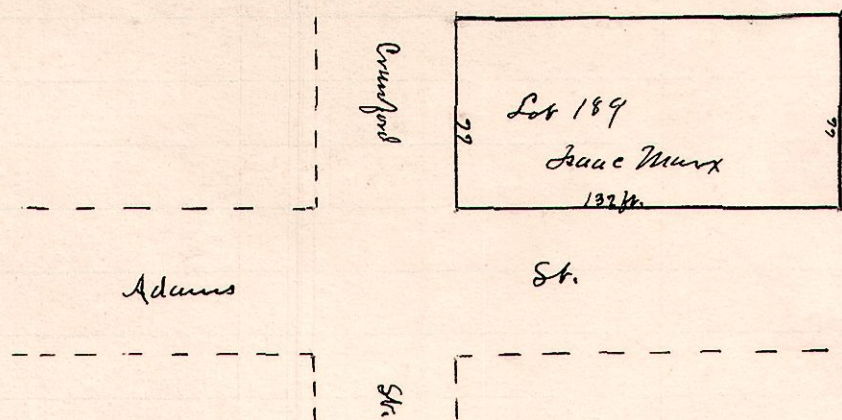


No. 154

R 7/2 Sec Lot
7 9 12 189



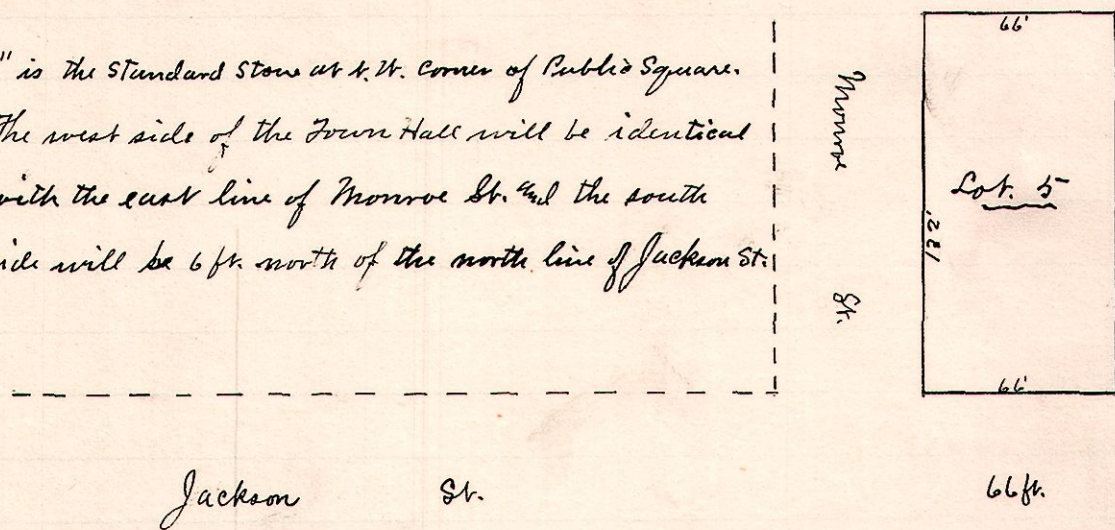
Starting stones N.E. Cor Lot 175
and S.E. Cor Lot 184 on Crawford St.

Surveyed for Isaac Murx and the Schuyler Electric Light Co.
Oct. 2, 1888
W.S. Hanna
County Surveyor

No. 155

R 7/2 Sec Lot
7 9 12 5

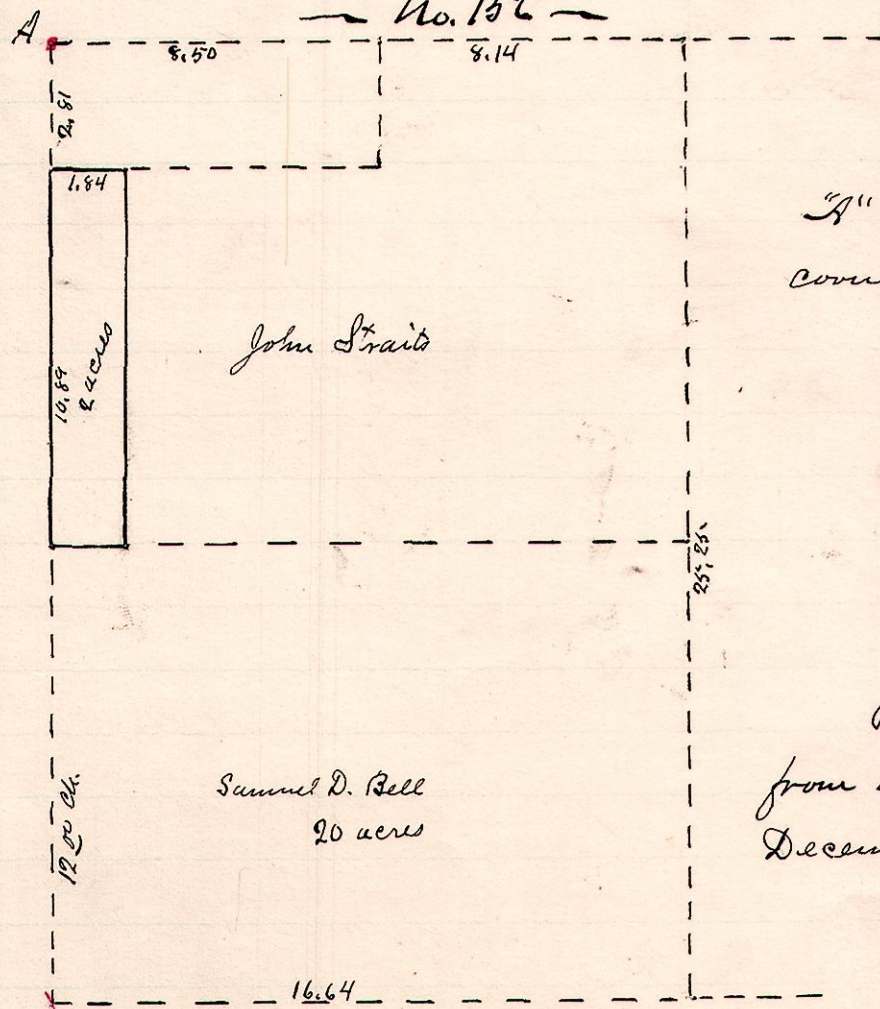
"A" is the Standard Stone at N.W. corner of Public Square.
The west side of the Town Hall will be identical
with the east line of Monroe St. and the south
side will be 6 ft. north of the north line of Jackson St.



A survey made of Lot 5 in the Village of Willensburg by order of the Village
Council for the purpose of finding the lines of the same for the erection of a Town Hall thereon.
Oct. 30, 1888
W.S. Hanna
County Surveyor

No. 156

R 7/2 2 7/2 Sec Pt.
6 8 2nd 26 West



"A" is a stone at the north west
corner of Lot 26, 2nd 2 7/2 Sec of T 8 R 6.

Plot and description taken
from an old survey and filed
December 22, 1888
W.S. Hanna
County Surveyor