

No. 144.

R 14 Sec 2 & 3  
13 14 34 S.W.

Prairie Cemetery,  
Prairie Tp.  
Holmes Co., O.

Description.

Beginning at a stone at the  
N.E. Cor of the S.W. 2<sup>o</sup> of Sec  
34, T<sup>o</sup> 14, R 13.

- N 88 3/4° W - 2.63 ch.
- S 1 1/4° W - 7.69 ch.
- S 88 3/4° E - 2.63 ch.
- N 1/4° E - 7.69 ch.

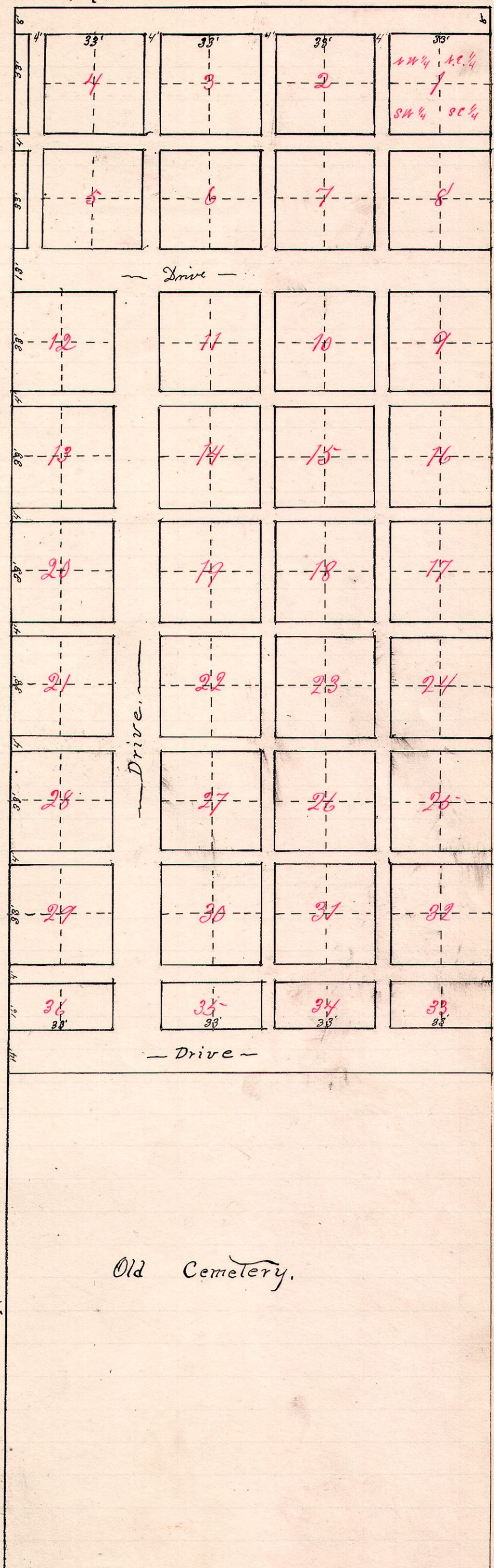
The "Squares" are 33' and  
are divided into 4 lots  
each 16 1/2 ft. square

The "Drives" and "Walks" were  
surveyed as represented  
on the plat.

Township Trustees.  
W. M. Miller,  
P. M. Deetz,  
Robert Miller.

Township Clerk  
Joseph M. Clelland.

Surveyed July 14 & 15, 1888.  
W. S. Hanna,  
County Surveyor.



Public Road

Old Cemetery.