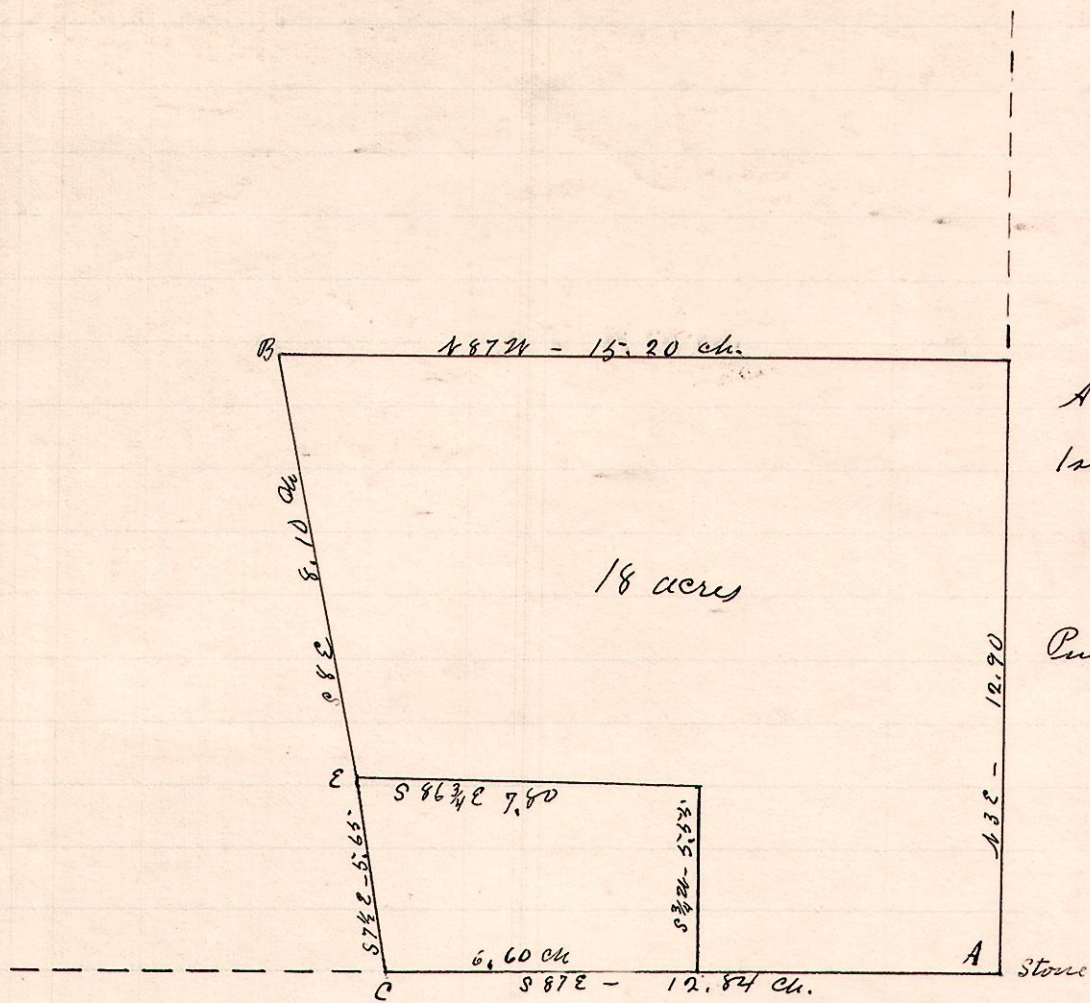


No. 118

R 7th 2nd Lot
8 9 1st 27



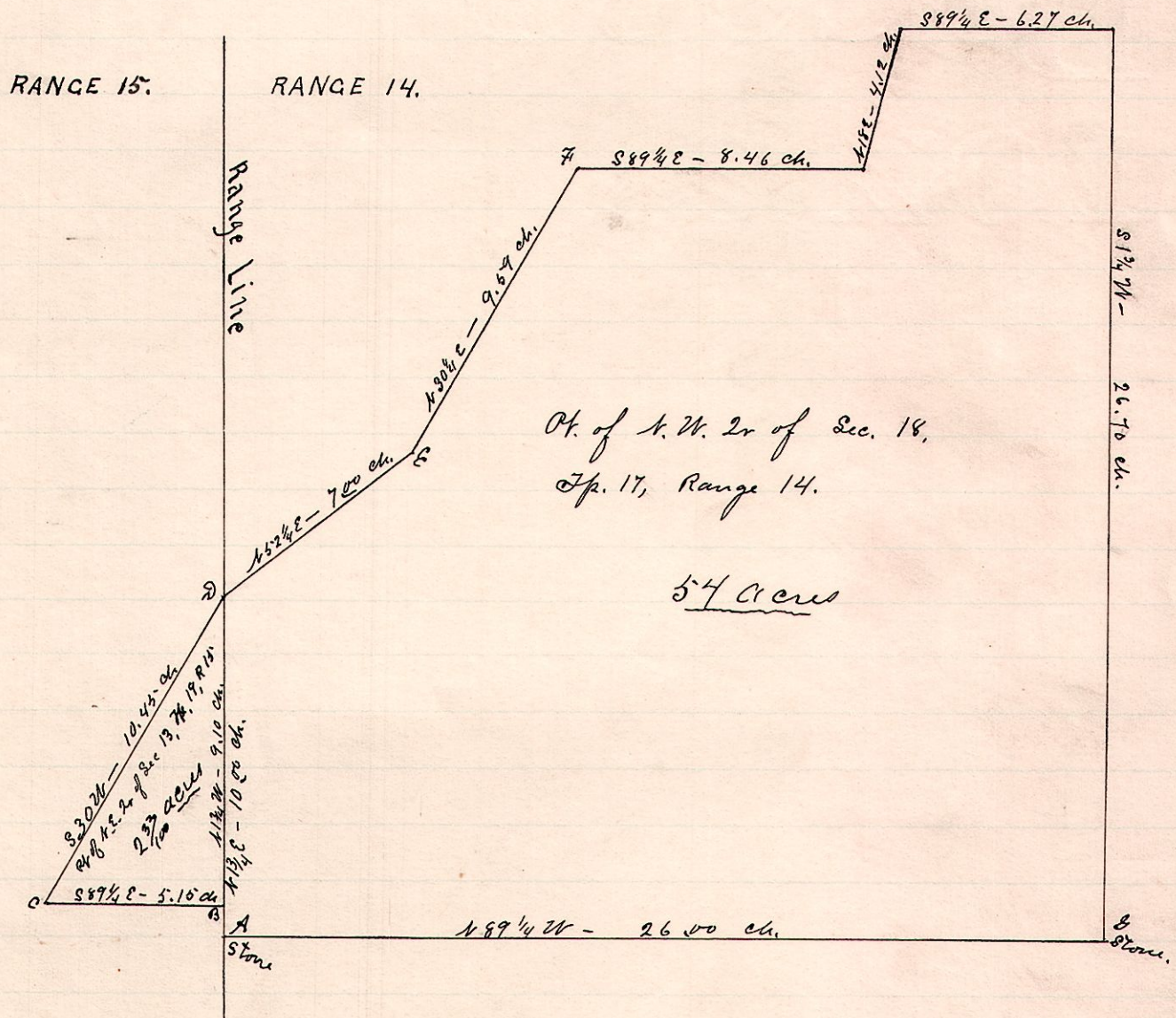
A is the S.E. cor of Lot 27 in 1st 2nd Tp. of T^h 9, Range 8.

Public road along the line B & C.

Surveyed the above for Davenport heirs April 2, 1888.
W.S. Hanna,
County Surveyor.

No. 119

R 7th Sec 2nd
14 17 18 4th
and
15 19 13 4th



Pt. of N.W. 2nd of Sec. 18, T^h 17, Range 14.

54 acres

A is the S.W. cor. of N.W. 2nd of Sec 18 T^h 17, R14.
B is the S.E. cor of N.E. 2nd of Sec 13 T^h 19, R15.
A to B is 90 links. G is S.E. cor of said 2nd Sec.
Public Road along the line C D E F and also along C B A G.

Surveyed the above for John Kiner, April 3, 1888.
W.S. Hanna
County Surveyor