

No. 104

R 7th Sec 2nd
9 8 25 SE

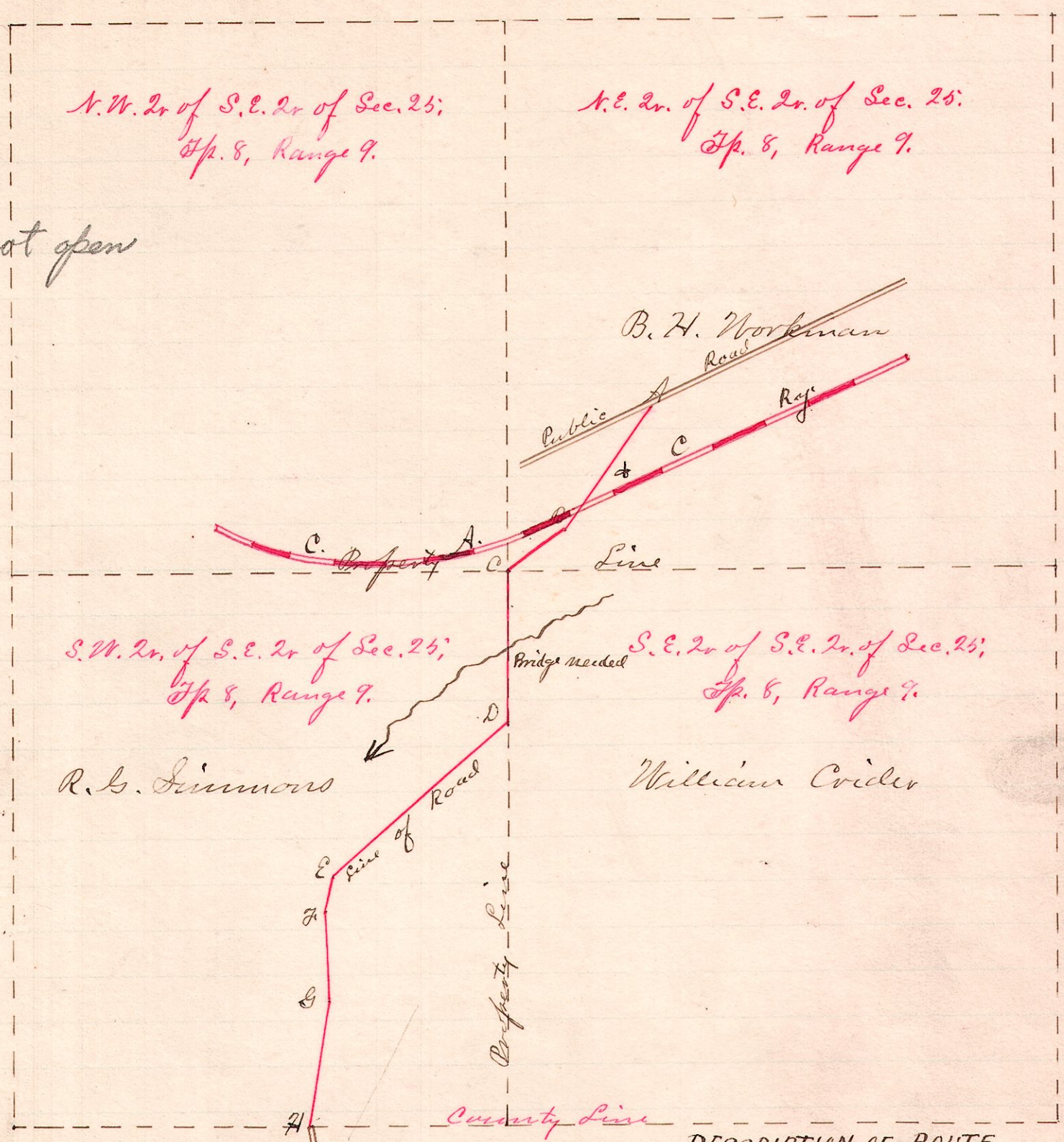
This road is not open

N.W. 2nd of S.E. 2nd of Sec. 25;
T^h 8, Range 9.

N.E. 2nd of S.E. 2nd of Sec. 25;
T^h 8, Range 9.

S.W. 2nd of S.E. 2nd of Sec. 25;
T^h 8, Range 9.

S.E. 2nd of S.E. 2nd of Sec. 25;
T^h 8, Range 9.



- | | |
|--------------------|--------------|
| Peter Stuber | } Viewers |
| William Purdy | |
| Nicholas Didingen | |
| Silas Robinson | } Chain men. |
| David Simail | |
| William Dill Aman. | |

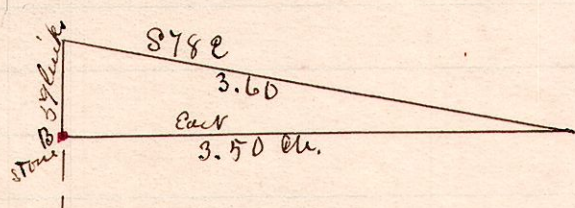
DESCRIPTION OF ROUTE

- A. S 34 1/4 W - 5.62
- B. S 54 W - 2.54
- C. S 3 W - 5.37
- D. S 49 1/2 W - 8.34
- E. S 14 1/2 W - 1.12
- F. S 2 E - 2.87
- G. S 12 1/2 W - 3.71

A survey made by order of County Commissioners, for the establishment of a County Road petitioned for by B. H. Workman et al.
December 13, 1887.
W. S. Hanna, Surveyor.
No. 105.

R 7th Sec 2nd
13 14 32 SW

A is a stone at the S.W. corner of Section 32
B is a stone 20.40 chains north of A on the west line of said section



Surveyed the above for Parah Ledy Dec 19, 1887
W. S. Hanna
Surveyor

Paint Jan 2, 88