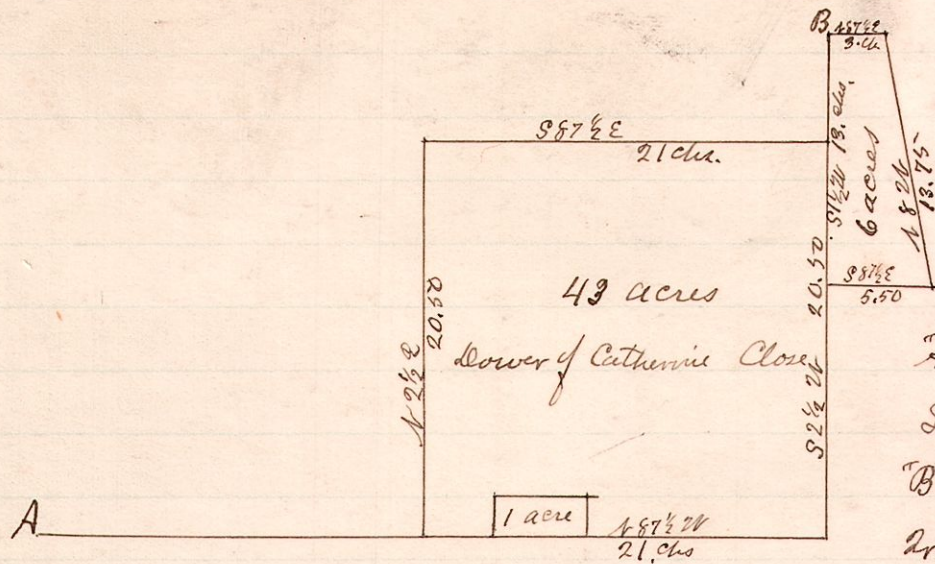


No. 98.

R Twp Sec 24 Pt
7 8 11 N.E. S.E. pt
and
R Twp Lot 23 Pt
6 8 33 2nd NW



Scale 10 chs to inch.

"A" is the S.W. corner of the N.E. 20. of Sec 11, Twp. 8, R. 7.

"B" is the N.W. corner of Lot 33 in 2nd 20. of Twp. 8, Range 6.

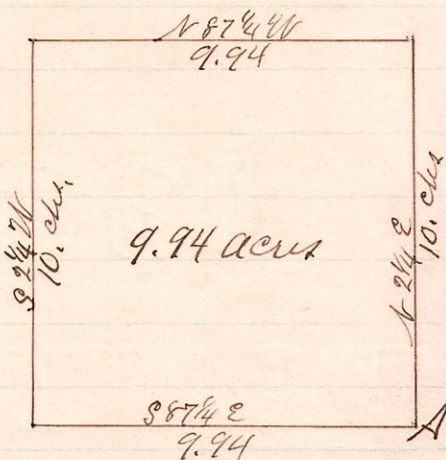
I hereby certify that the above is a correct copy of a survey made by W.C. Reed, Jan 21, 1887.

W.S. Hanna
County Surveyor

No. 99.

R Twp Sec 21 S. Pt
7 8 9 S.E. S.E. pt

Scale 5 chs. to inch.



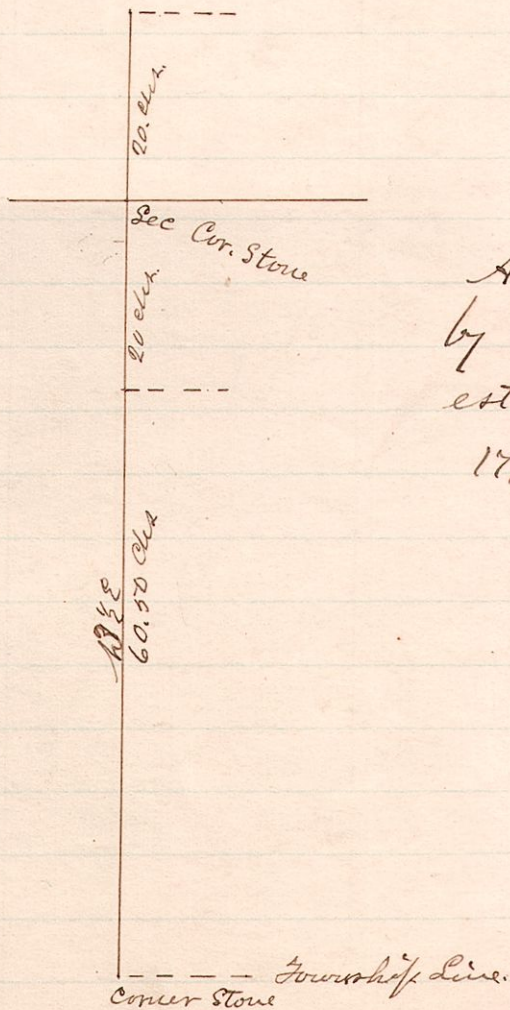
A is the S.E. corner of Sec 7 Twp 8, R 7.

I hereby certify that the above is a correct copy of a survey made for John C. Spring by W.C. Reed on March 4, 1886

W.S. Hanna,
County Surveyor,

No 100.

R Twp Corner of
9 9 Secs 17, 18, 23+24



A survey made for Robert Force by W.C. Reed for the purpose of establishing corner between Sections 17, 18, 23 and 24 in Twp. 9, R. 9.

I hereby certify the above to be a correct copy of said survey made March 5, 1886

W.S. Hanna
County Surveyor