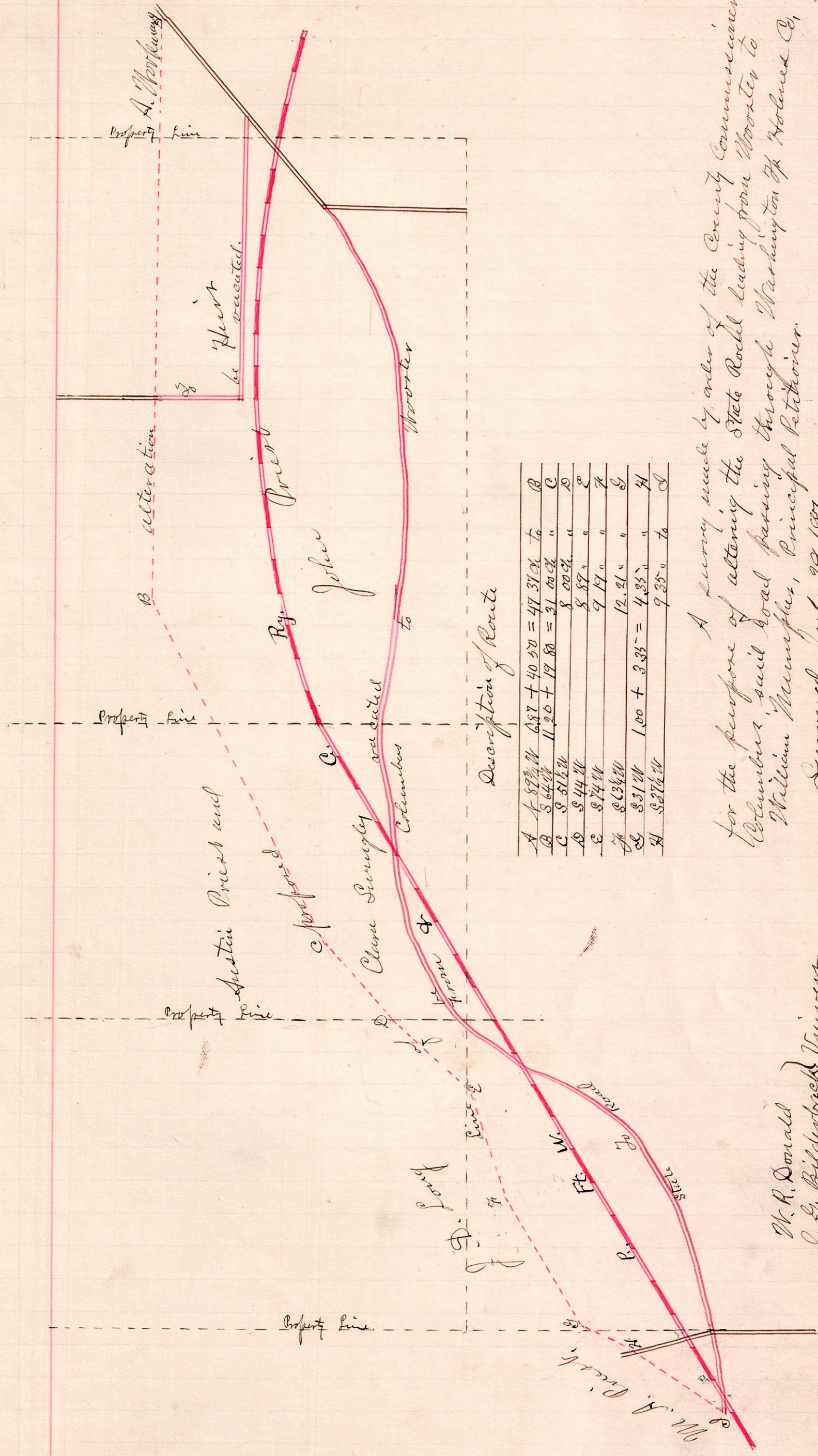


No. 87.

R 7/2 Sec
15 20 31
SR3



Description of Route

A	N 87 1/2 W	687 + 40.50 = 47 37.00	to	B
B	S 64 1/2 W	1120 + 19 80 = 31 00.00	"	C
C	S 51 1/2 W	8 00.00	"	D
D	S 44 W	8 87 "	"	E
E	S 74 W	9 19 "	"	F
F	S 63 1/2 W	12.21 "	"	G
G	S 31 W	1.00 + 3.35 = 4.35 "	"	H
H	S 27 1/2 W	9.25 "	to	I

A Survey made by order of the County Commissioners for the purpose of altering the State Road leading from Wooster to Columbus, said road passing through Washington & Holmes Co., William Mumpher, Principal Petitioner.

Surveyed July 29, 1887

W. A. Donald
L. E. Bilderback } Unsworn
J. M. Finney

W. S. Hanna
County Surveyor