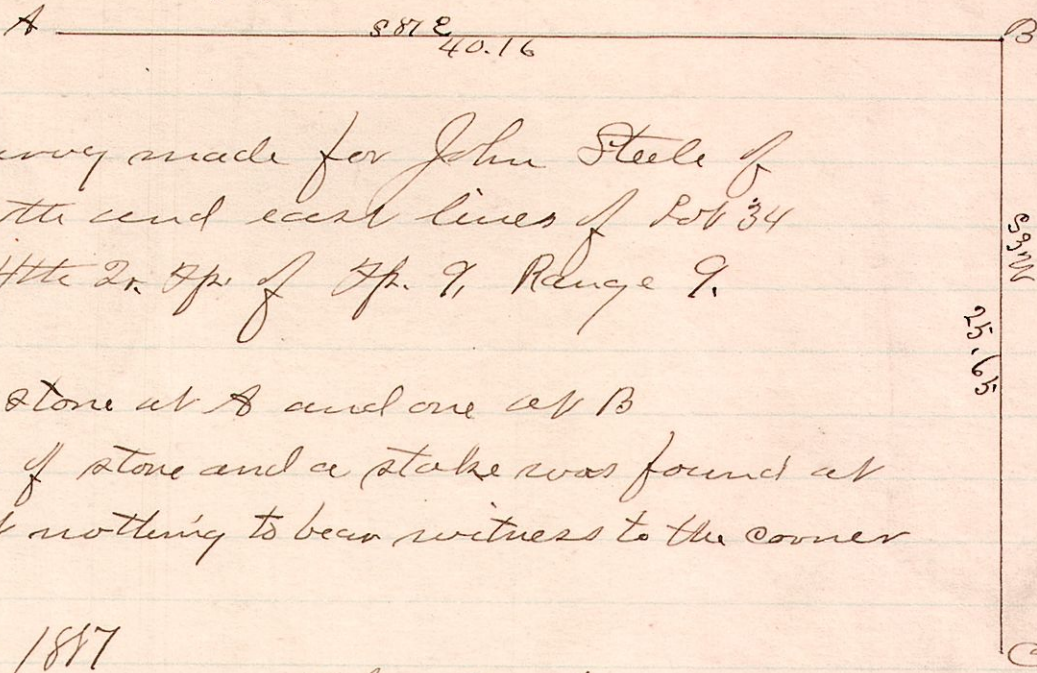


No. 77.

R 2<sup>d</sup> 4<sup>th</sup> Sec  
9 9 4 34 Lines



A survey made for John Steele of the north and east lines of Lot 34 in the 4<sup>th</sup> 2<sup>d</sup> 4<sup>th</sup> of Twp. 9, Range 9.

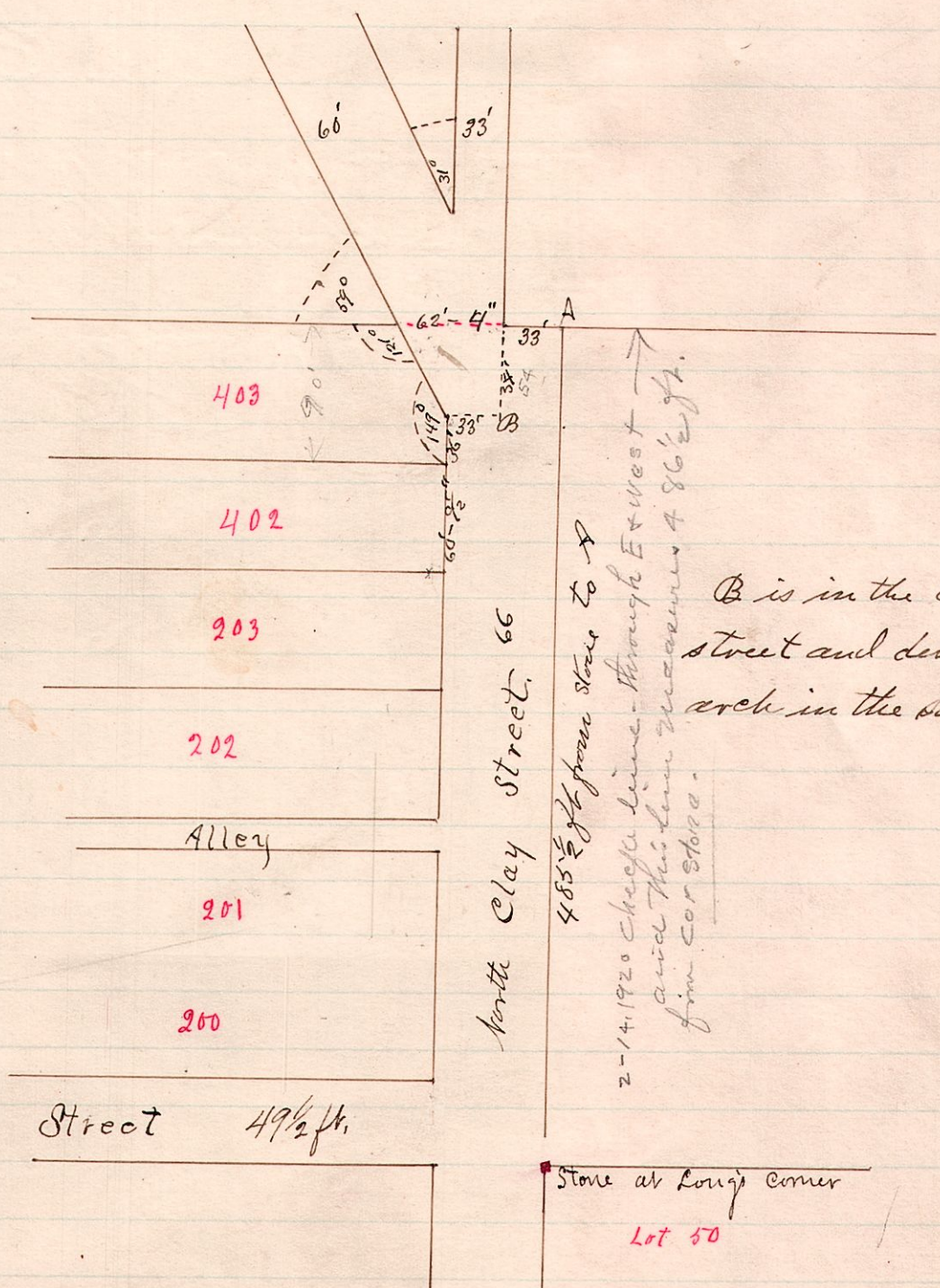
Planted stone at A and one at B  
A pile of stone and a stake was found at C, but nothing to bear witness to the corner

Oct. 13, 1877

W. S. Hanna  
County Surveyor

No. 78.

R 7 Sec  
7 9 12



485 1/2 ft from stone to A  
2-14-1920 Chieftan line through E & West  
said this line measures 486 1/2 ft.  
from cor Stone

B is in the center of the street and directly over the arch in the stone culvert.

A survey made for M. Simon for the purpose of determining the turn in the road at the north end of North Clay Street in the village of Millenbury, Ohio.

Sept. 6, 1877

W. S. Hanna  
County Surveyor