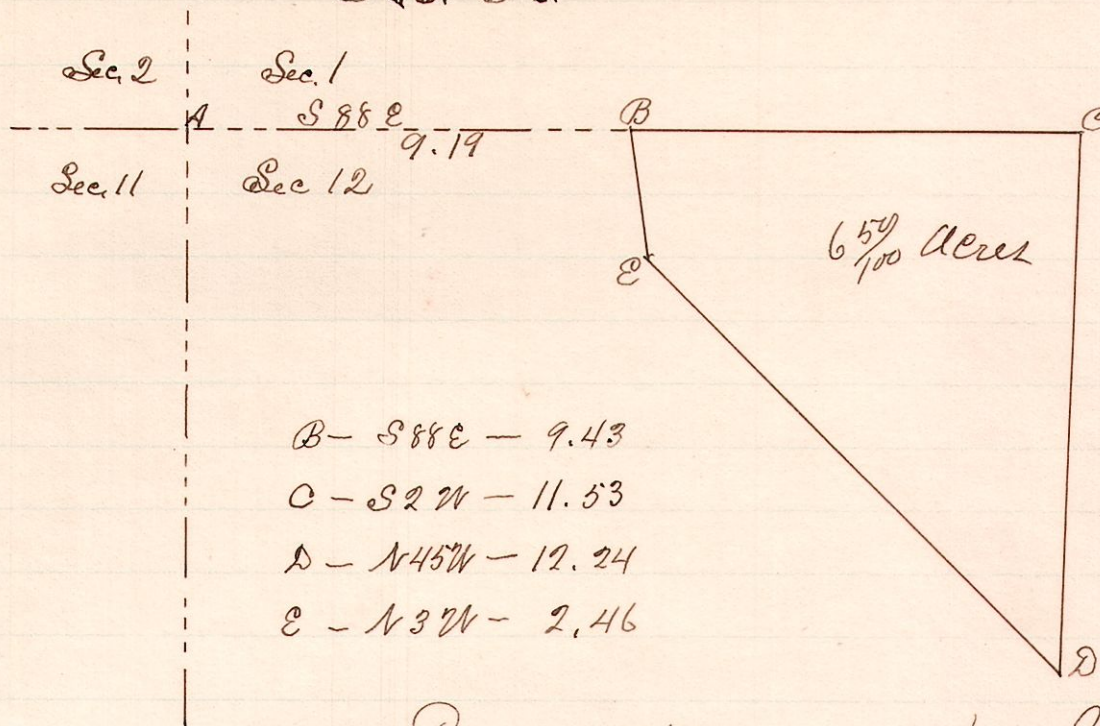


No. 57

R 7 Sec 2, 3e
12 14 12 1W



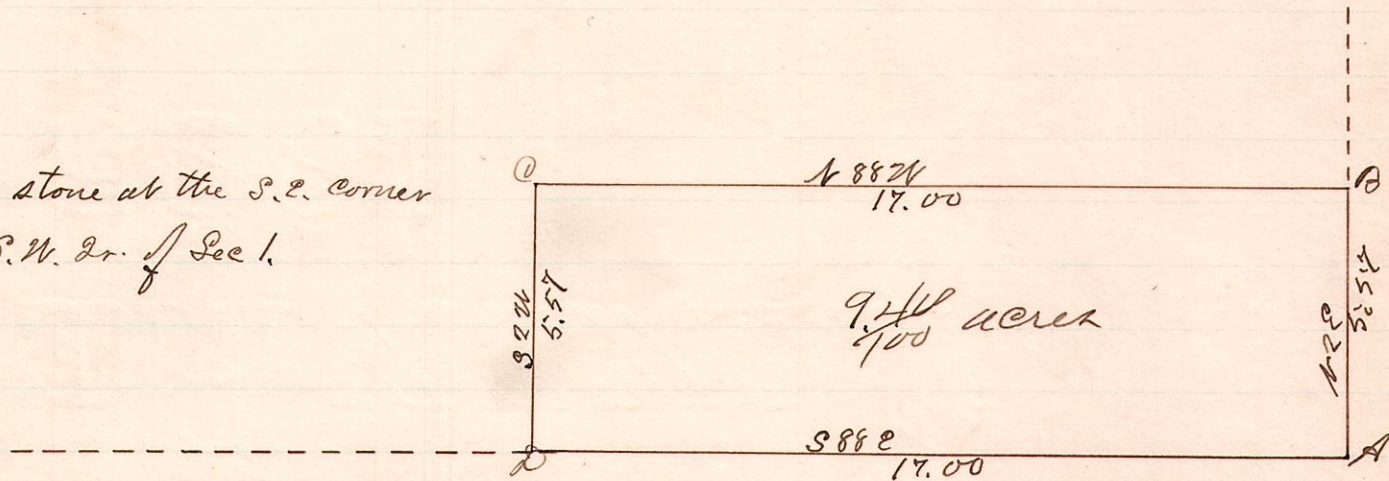
- B - S 88 E - 9.43
- C - S 2 W - 11.53
- D - N 45 W - 12.24
- E - N 3 W - 2.46

Surveyed the above for John Hamm and Joseph Somers, March 21, & 22, 1887.
W. S. Hanna,
County Surveyor.

No. 58.

R 7 Sec 2, 3e
12 14 1 3W

A is a stone at the S.E. corner of the S.W. 2r. of Sec 1.

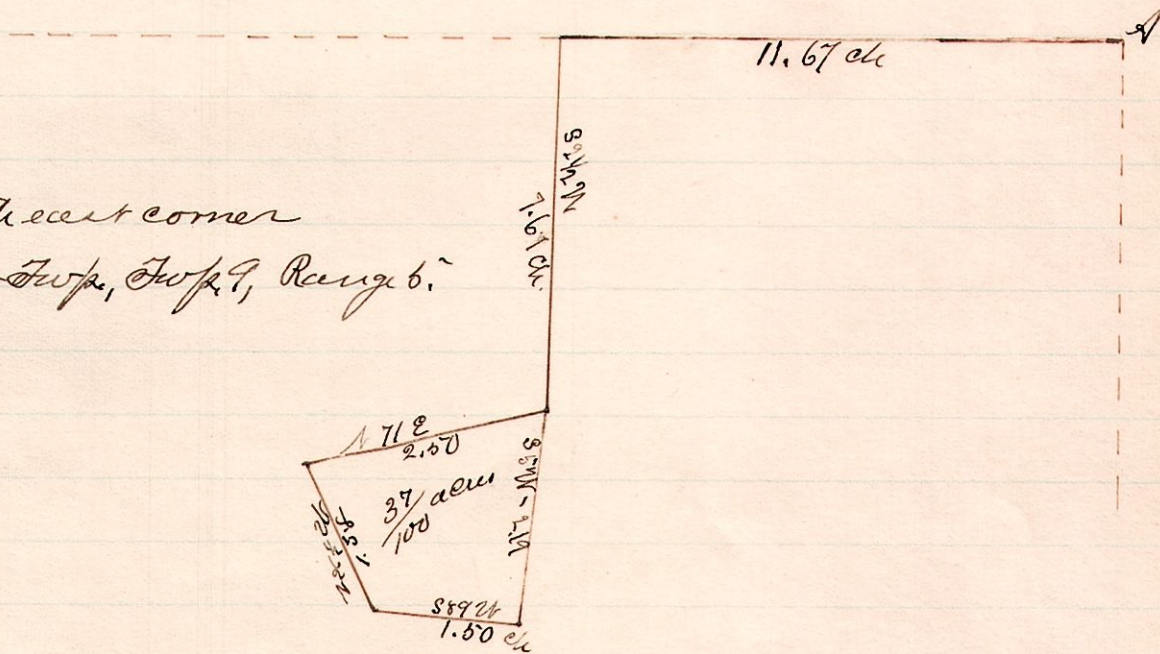


Surveyed the above for John Hamm and Levi H. Mast, March 21, 1887.
W. S. Hanna,
County Surveyor.

No 59.

R 7 Sec 2, 3e Lot 1
5 9 lot 1

A is the northeast corner of Lot 1, 1st 2nd 3rd, 4th 5th, Range 6.



Surveyed the above for D. B. Mullet, March 23, 1887.

W. S. Hanna,
County Surveyor.