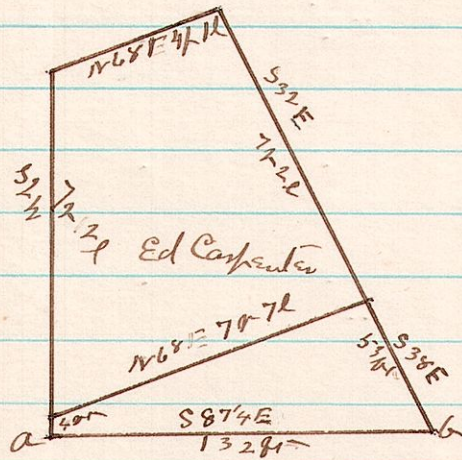


450

462

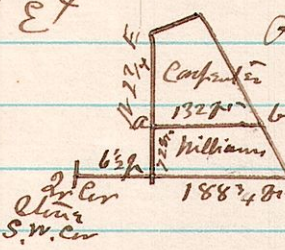
7 8 21 P. S. E. 2r



A Survey made for Kincker plus of part of the South East 2r Section 21 in T. 8 R. 7 Surveyed April 28<sup>th</sup> 1885 line a b of this plat corresponds and is the same as line a b of the next plat James L. Callhoun Co. Surveyor

463

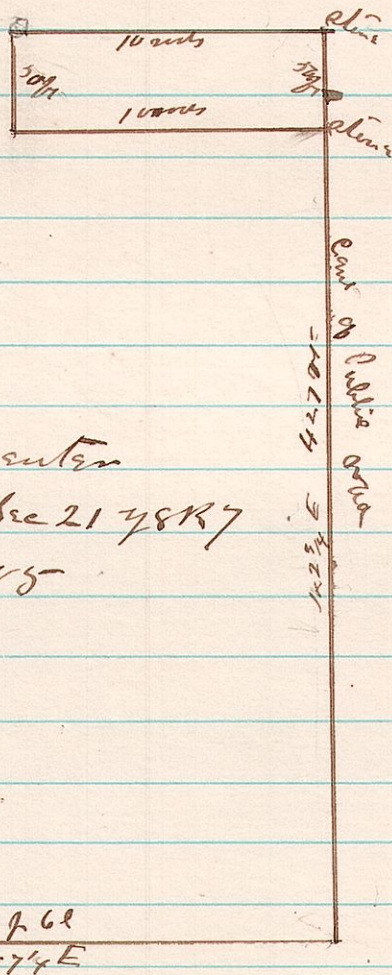
7 8 21 P. S. E. 4



A Survey made for Carpenter & Kincker of P. S. E. 4 Sec 21 T. 8 R. 7 line a b of this Plat corresponds with line a b of the above or last Plat James L. Callhoun Co. Surveyor

464

7 8 21 P. S. E. 4



A Survey made for Edward Carpenter of a Town lot lying in the S.E. 4 Sec 21 T. 8 R. 7 on the 28<sup>th</sup> day of April A.D. 1885 James L. Callhoun County Surveyor