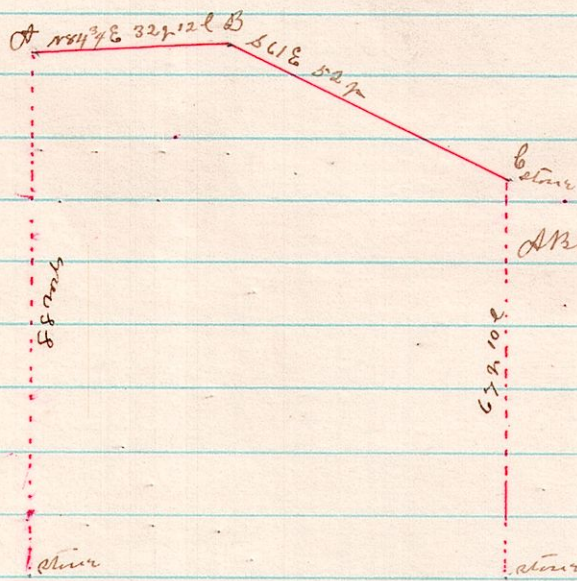


No

384 7 8 2 line in E 1/2 S.W. 4

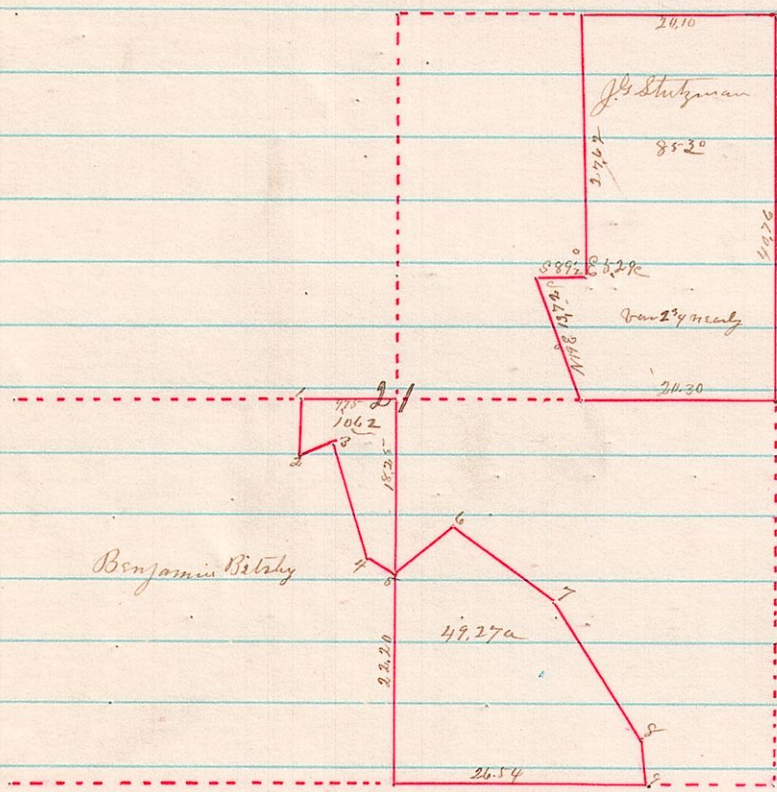


A B C line run between brass rdgers in the E 1/2 S.W. 4 Sec 2  
T 28 R 7 Surveyed Sept-17<sup>th</sup> 1884

James C. Calhoun Co Surveyor

No

385 5 8 21 P 5



Bearings

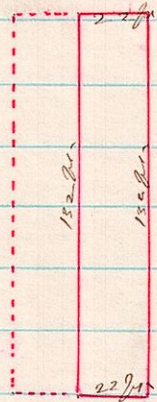
1-2	S 5 1/2 W	6.07
2-3	N 76 E	3.57
3-4	S 16 E	12.0
4-5	S 64 3/4 E	35.4
5-6	N 50 1/2 E	7.47
6-7	S 50 1/2 E	12.40
7-8	S 28 3/4 E	12.00
8-9	S 11 3/4 E	4.57

Far on line 2 3/4 rods

A Survey of Part of Sec 21 24 8 R 5 made for Jacob C. Stutzman  
and Benjamin Bittaly on the 20<sup>th</sup> day of Sept 1884 of which the  
above is a correct plat James C. Calhoun Co Surveyor

No

386 7 9 Lot 1 and 21- (Millersburg Co.)



Surveyed the middle part of Lot 1 Millersburg Co for F. F. Smith  
September 9<sup>th</sup> 1884 James C. Calhoun Co county Surveyor