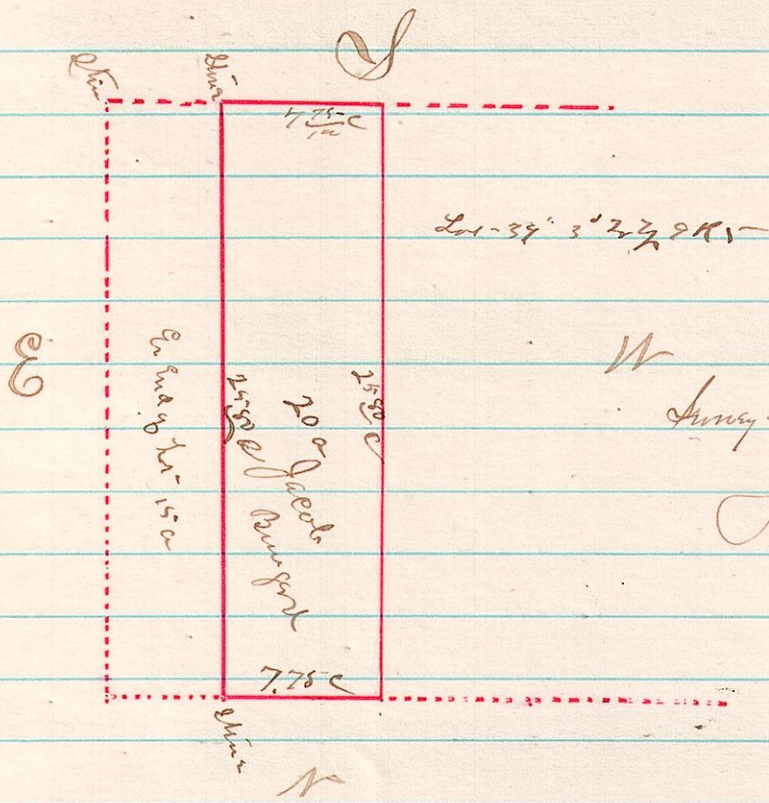
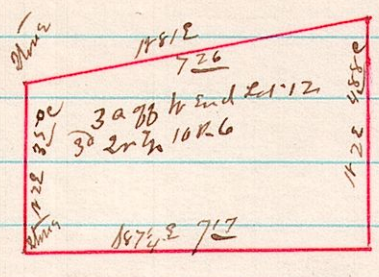


No. 363 6 9 39 1/2 part



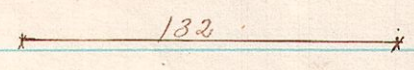
Surveyed for Jacob Bumpard
J. C. Ballou Co Surveyor

No. 364 6 10 12 1/2 part



Surveyed the above for Mrs. L. Sprague February 18th 1884
J. C. Ballou Co Surveyor

No. 365 7 9 Lot 192



A Survey made of the division line between Ford Buck & Kuku being in the north part Lot 192 Millersburg, Ohio on the 28th day of March 1883 J. C. Ballou Co Surveyor