

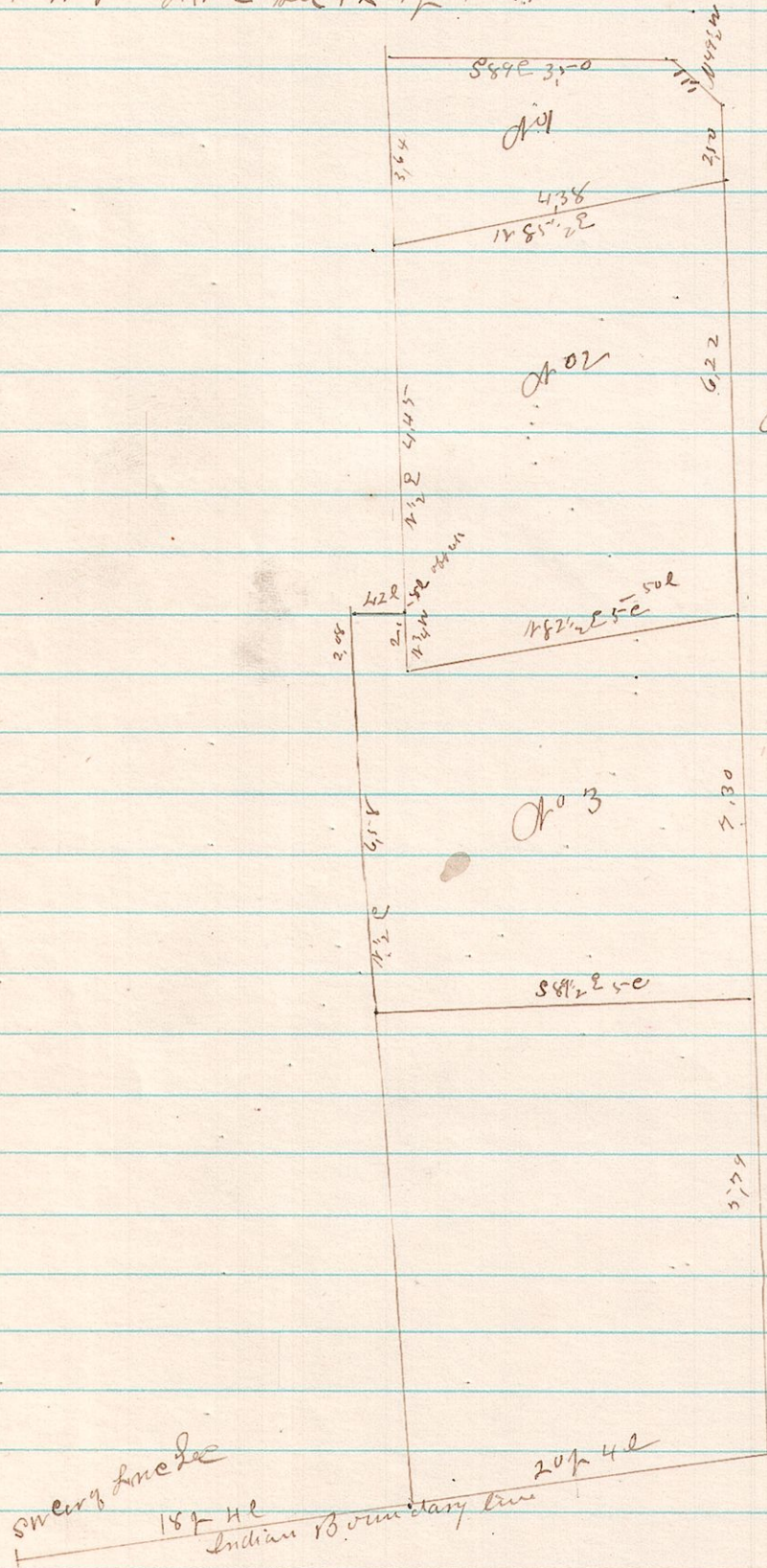
no

327

14 17 3+4 In Part between Sec 3+4 T₁₇ R 14 + Section Corner for Section 34.9+10 same T₁₇ + Range
 I commenced at the center cor of Sec 3 run West at 40.000 feet temporary post - 80.10 miles
 corner to South 56°32' Correlated corner + proportions ^{line} with survey made by J Robinson
 Look Gray granite Tomb stone in grave yard for witness which stood N 77 3/4° E 235 links
 commenced at 2nd cor established run South 17° W 20 feet temporary post - 80.82 miles
 27 links to E Correlated back and set ^{line} corner in straight line proportions with measurements
 taken by J Robinson
 Surveyed November 1882
 J. McCallum Co Surveyor

no

328 12 14 12 P1-W P1 Zone Sec 12 T₁₄ R 12



A Survey made for John Ham
 September 22nd 1882
 James McCallum
 County Surveyor