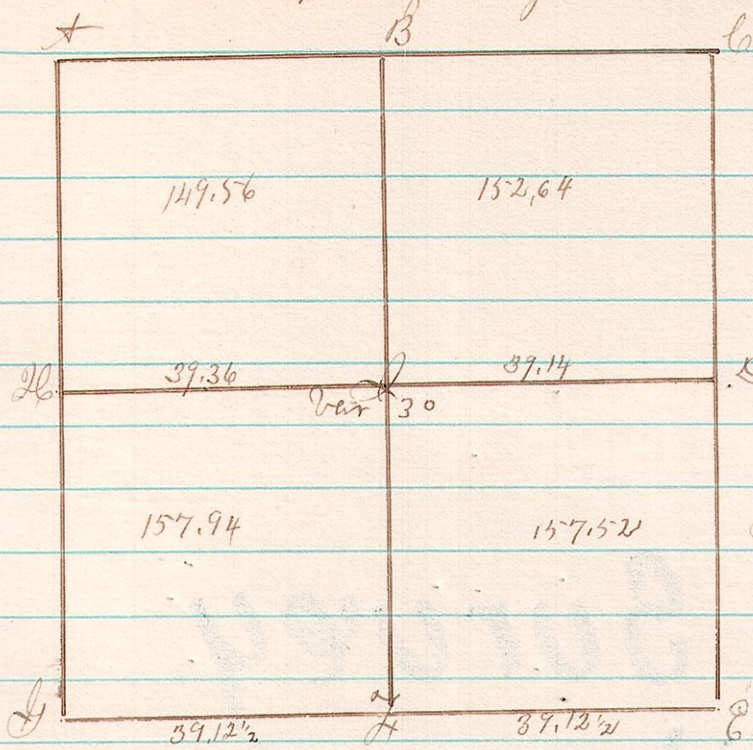


315-15 20 22 Section 22 in Township 20 of Range 15



Witness Trees

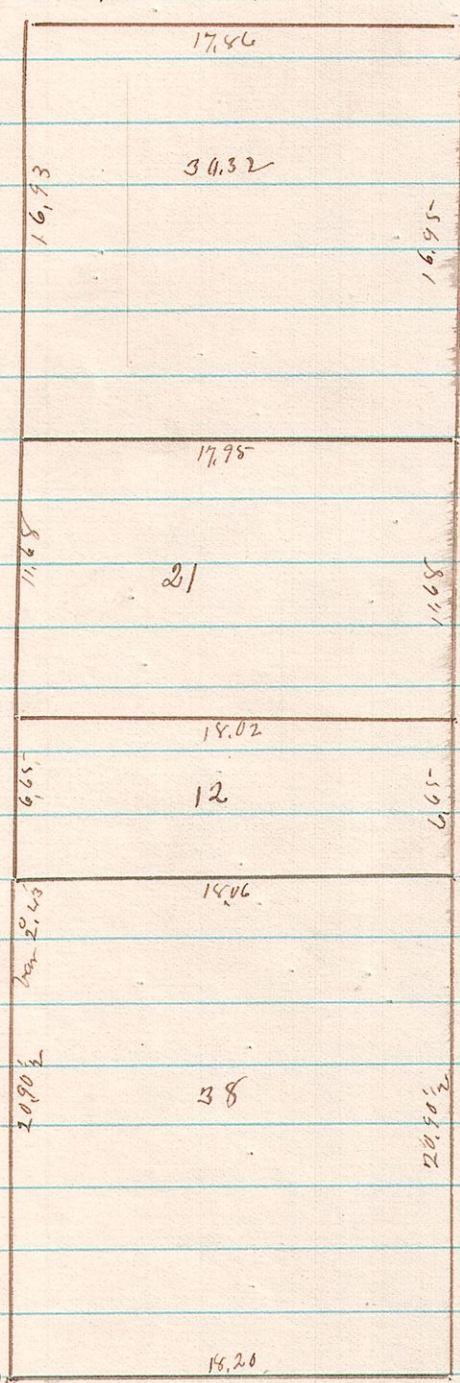
- A White Oak 12 S 61 W 32 + do 10 S 70 E 38
- B White Oak 10 S 17 W 6 + White Oak 10 S 59 E 35
- C White Oak 16 S 26 W 11 + Hickory 10 S 77 E 31
- E no Bearing trees Post set in Swamp
- L Swamp Oak 18 S 32 1/2 E 34 + Red Elm 10 S 38 W 57
- S White Oak 12 S 40 E 8 + White Oak 5 S 48 W 4
- H White Oak 10 S 20 W 15 + White Oak 15 S 18 E 27
- I White Oak 18 S 36 E 19 + White Oak 15 S 14 E 15
- D White Oak 30 S 11 W 25 + White Oak 24 S 37 E 47

I certify the above plot to be correct

This 20th day of October 1882

James C. Allison
County Surveyor

316 9 9 27 Lot 27 4th Tr T₉ R₉



Reseal
Mr. Oberholzer Chairman
Nesley Young

Surveyed October 1882

J. C. Allison Surveyor

S.P. found original
K.O. and established corner