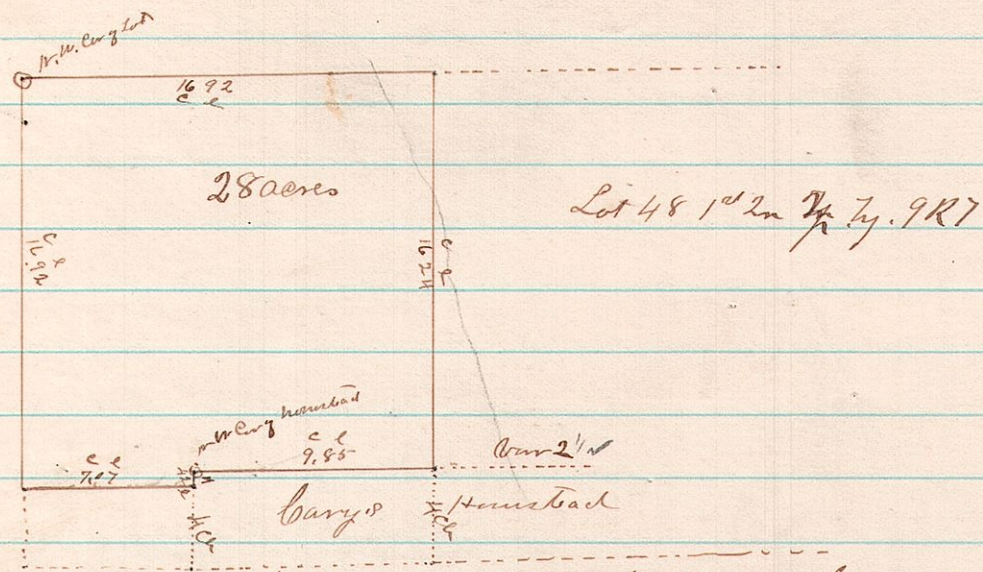


No 273

7 9 48 N.W. PC



A survey made for Wellington Stittwell in accordance with a tax certificate for delinquent tax paid by him on the above lot bearing the date of January 20th 1880 said survey was made on the 21st day of January 1882 and in accordance James L. Balloum County Surveyor with said certificate.

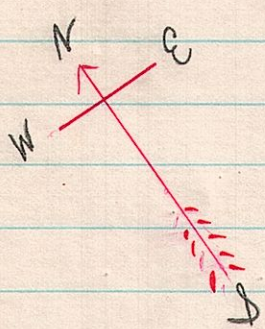
No. 274 13 13 718 Road in Sec 9 T8 R 13 John Kinvin
Principal Petitioner

Survey July 21 1881 by order of Commissioners

1	East along line	28.00
2	S 60 1/2 E	.97
3	N 67 3/4 E	1.18 to line
4	East along	9.46 to line
5	S 89 3/4 E	5.19
6	N 9 1/2 E	7.12
7	N 36 1/4 E	2.47
8	N 39 1/4 E	5.19
9	N 32 3/4 E	2.24
10	N 29 1/4 E	2.59
11	N 32 E	1.19 to line
12	East on line	20.25 - 6 1/2 E
13	N along "	5.80
14	N 77 1/4 E	20.46

Sta 14 = 8 Bearings sig 1178 1/2 E 647 1177 1/2 E 514 1175 1/2 E 8 1/2

Surveyed by
James L. Balloum
County Surveyor



Balloum's
120 308 1/4 W 10
20 3 126 1/2 W 16

