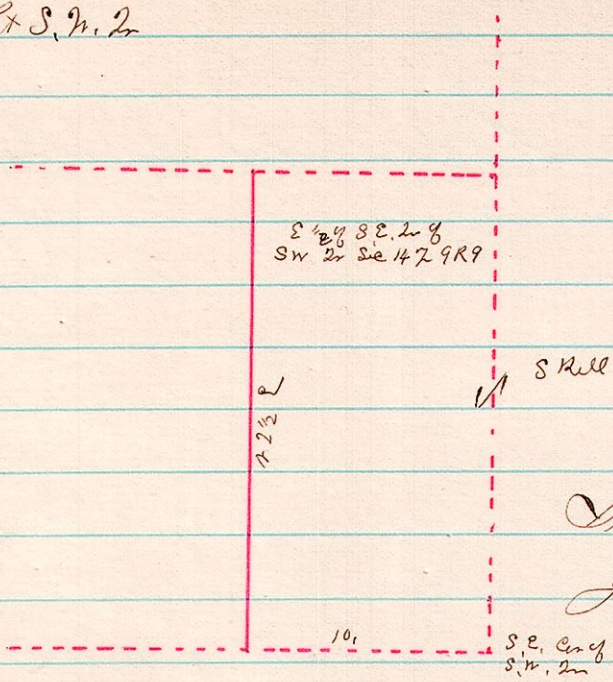
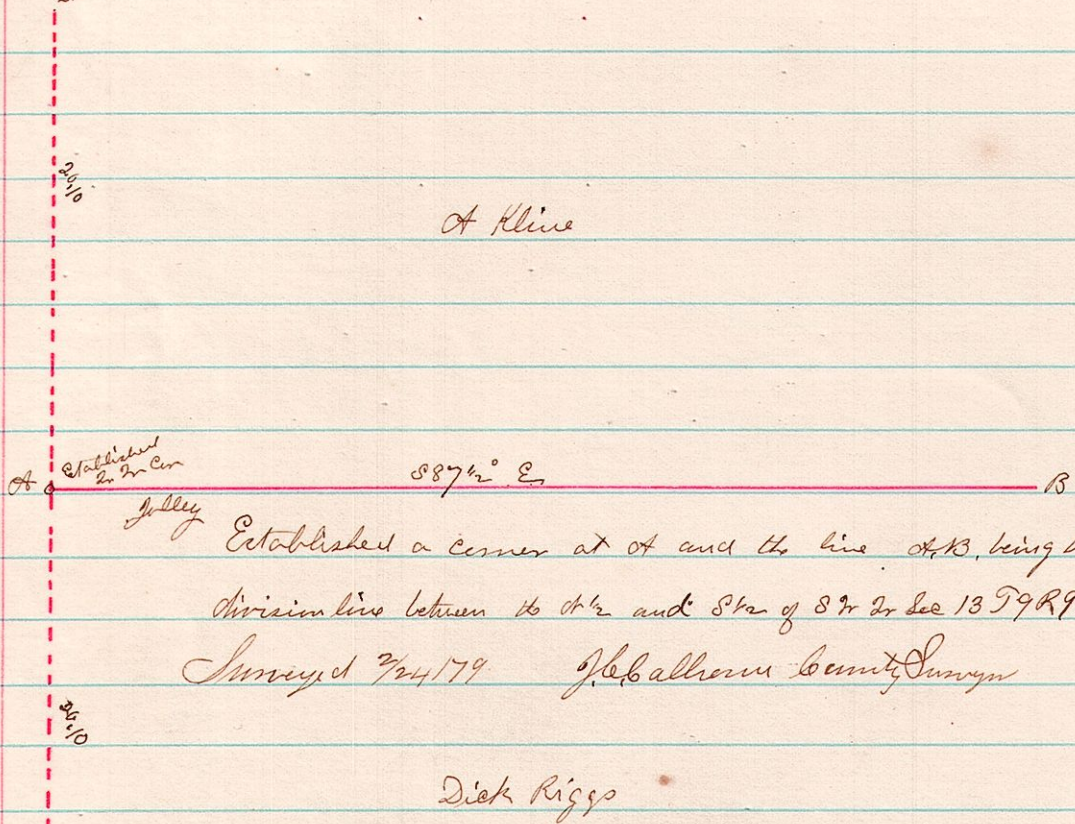


9 9 14 P.S.M. 2



Surveyd 7/23/79
J. H. Ballhorn County Surveyor

9 9 13 2nd Cor on the line



Established a corner at A and the line A-B, being the
division line between the 1/2 and 1/4 Sec of SW 2nd Sec 13 T9R9
Surveyd 7/24/79 J. H. Ballhorn County Surveyor

0.30, Found
S.E. Cor of S.W. 2nd
Sec 13 T9R9