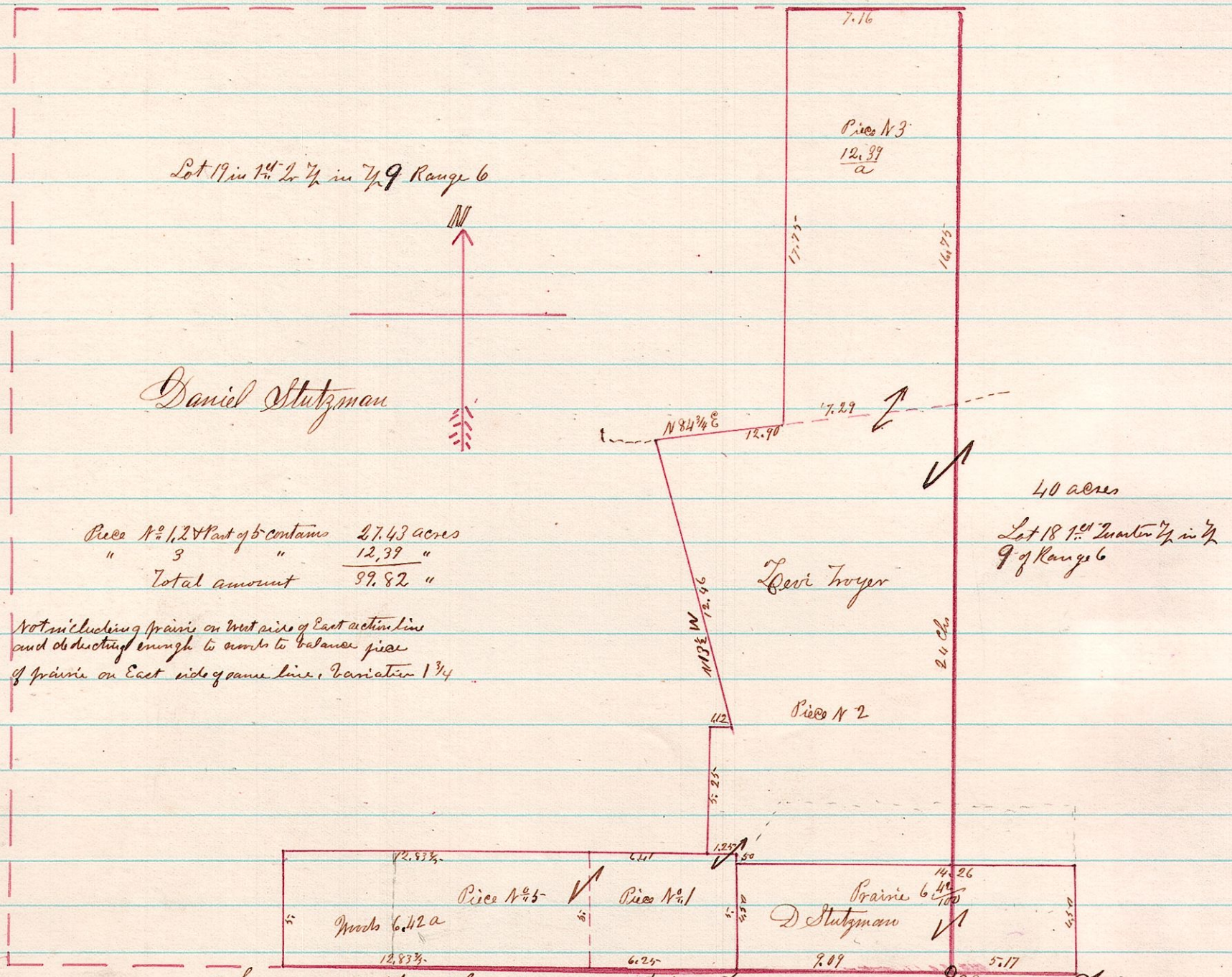


N^o 195

6 9 ¹⁸⁷⁸ A Survey made for Daniel Stutzman of a East part of Lot 19 in the 1st Quarter Township in Township 9 of Range 6

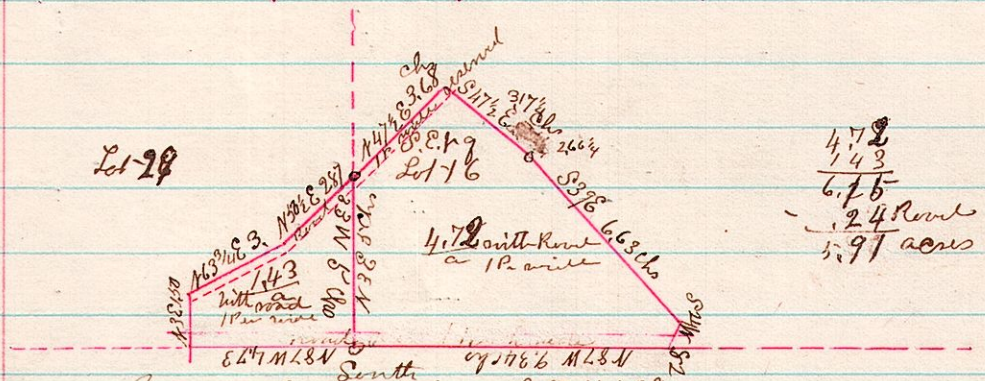


Piec N 1, 2 & 3 contains 27.43 acres
 " 3 " 12.89 "
 Total amount 89.82 "

Not including prairie on west side of East section line and obstructing enough to admit to balance piece of prairie on East side of same line. Variation 1 3/4

Surveyed the above January 28th 1878
 J. G. Calhoun
 County Surveyor

5 10 ¹⁸⁷⁸ A Survey made for Michael Etting of a small piece laying in the S.W. corner of Lot 16 and a piece in the S.E. corner of Lot 29, 4th 2nd 1/4, 1/4 10 of Range 5



Surveyed the above February 21st 1878
 J. G. Calhoun
 County Surveyor