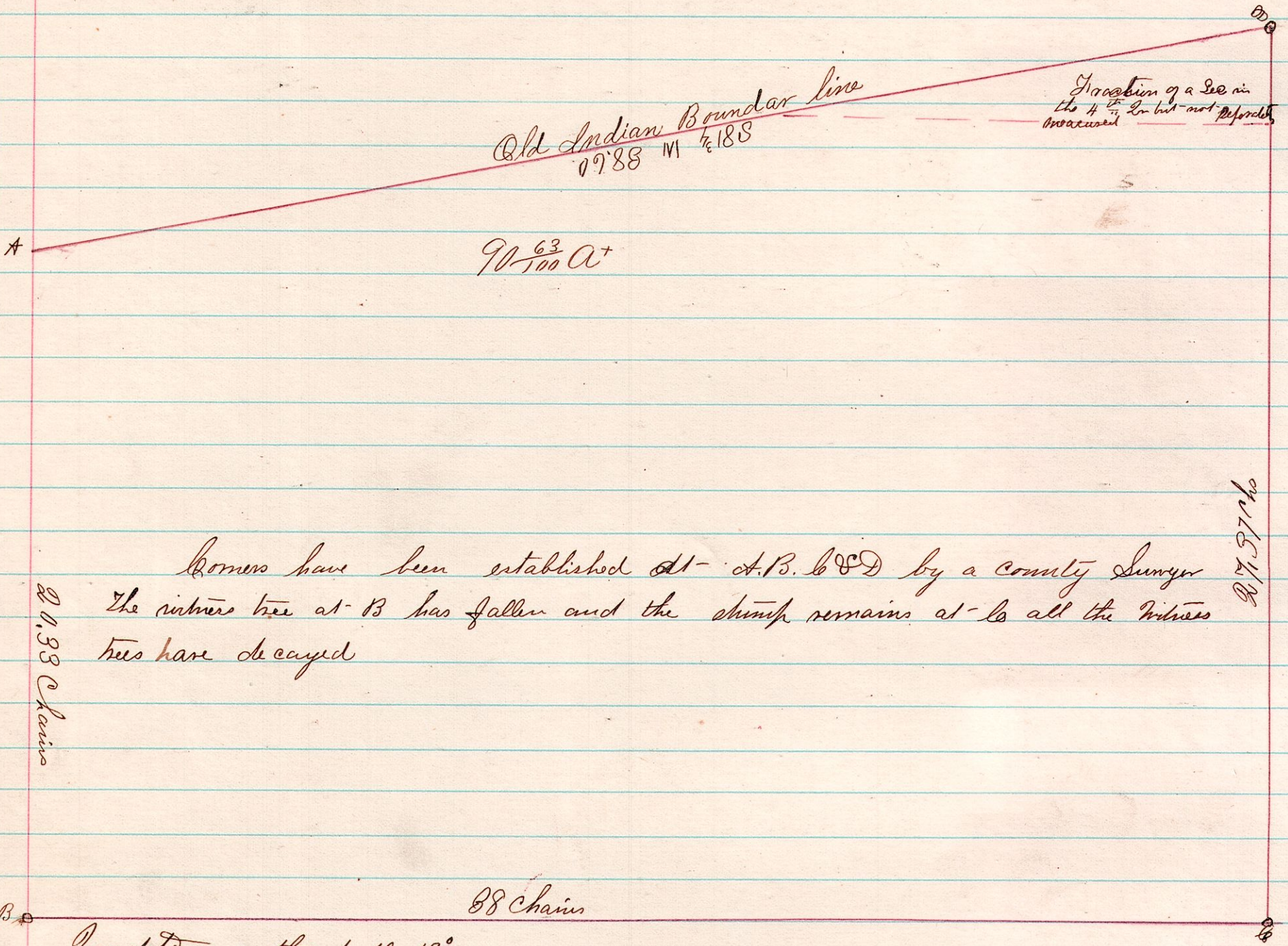


7 9 39, 33rd A Survey made for - Septum at the request of his brother James
Septum of the East-part of Lot 39 in the 3rd 2nd Sec 7th 9 of R 7

N^o 178



20.93 Chains

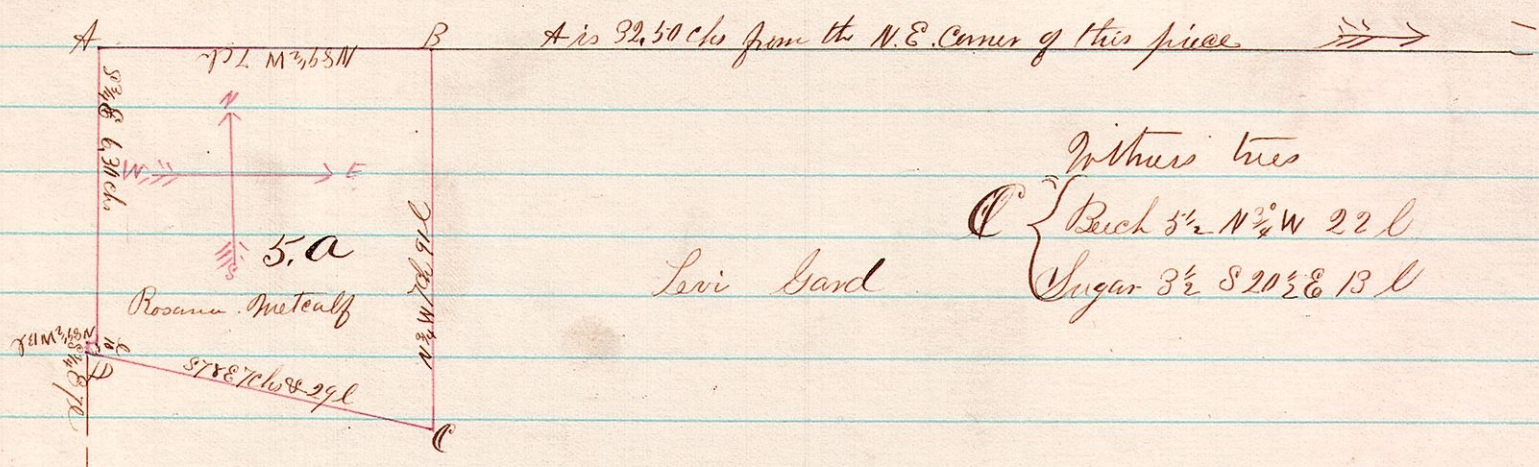
Corners have been established at A, B, C & D by a County Surveyor
The witness tree at B has fallen and the stump remains at C all the witness trees have decayed

20.93 Chains

88 Chains
 Division of the Acre 13 1/4
 Surveyed the above June 14th 1877
 J. C. Calhoun
 County Surveyor

N^o 179

13 14 31



Witness trees
C { Birch 3 1/2 N 2 1/2 W 22 ch
Sugar 3 1/2 S 20 1/2 E 13 ch

Levi Gard

I Surveyed the above being in the N.W. corner of the East part of the North West
 Quarter of Section 31 in Township 14 of Range 13 containing 5 acres
 Surveyed July 19th 1877
 J. C. Calhoun
 County Surveyor