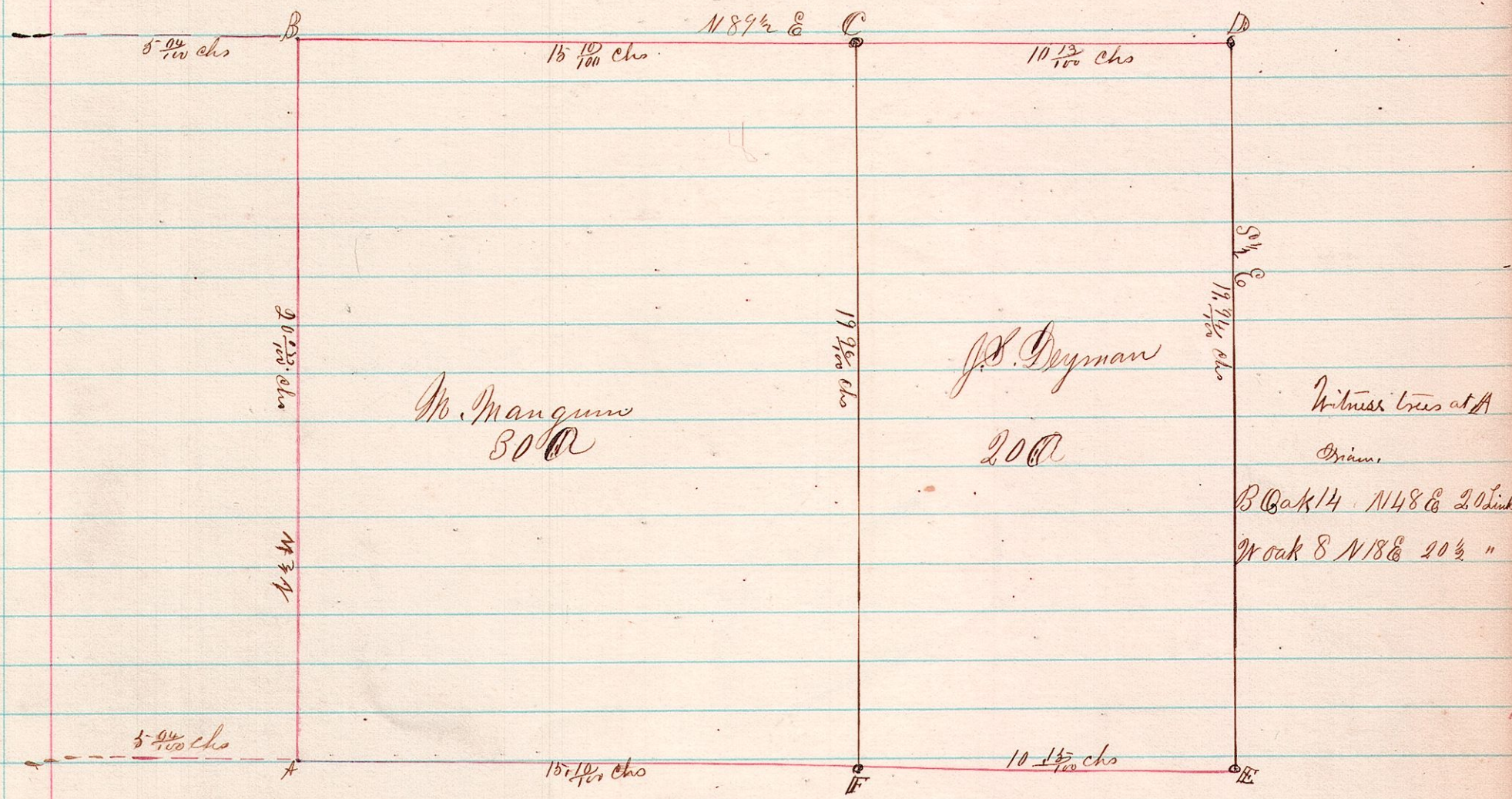


A Survey made for Michael Mangum of a piece lying in the N W 2^d of Sec 15-20 35-35 Township 20 of Range 15-
A-2175-



The above survey was made to establish the line AB, and on referring to the records I find two surveys made by County surveyors one in the old record page 246 and the other in this record page 138 both of these surveys as far as this line is concerned agree exactly in the measurements made by the respective persons but it seems a discrepancy has arisen in the surveys by commencing at different corners. Mr Mangum's deed locates his land from the corner D, hence he starts from that point and found corner stones that had been established and recorded in the old record page 246 at C, F, & E at the latter the bearing trees were in good preservation. After having measured and set the stones established I measured the respective distances from these two points west as set forth in the above plat and thus established line B. A.

Isaac Wiggins & Robert Casey were sworn and acted as chain carriers
Bearing trees were taken at A as above recorded
Surveyed
May 9th 1877

J. C. Calhoun
County Surveyor