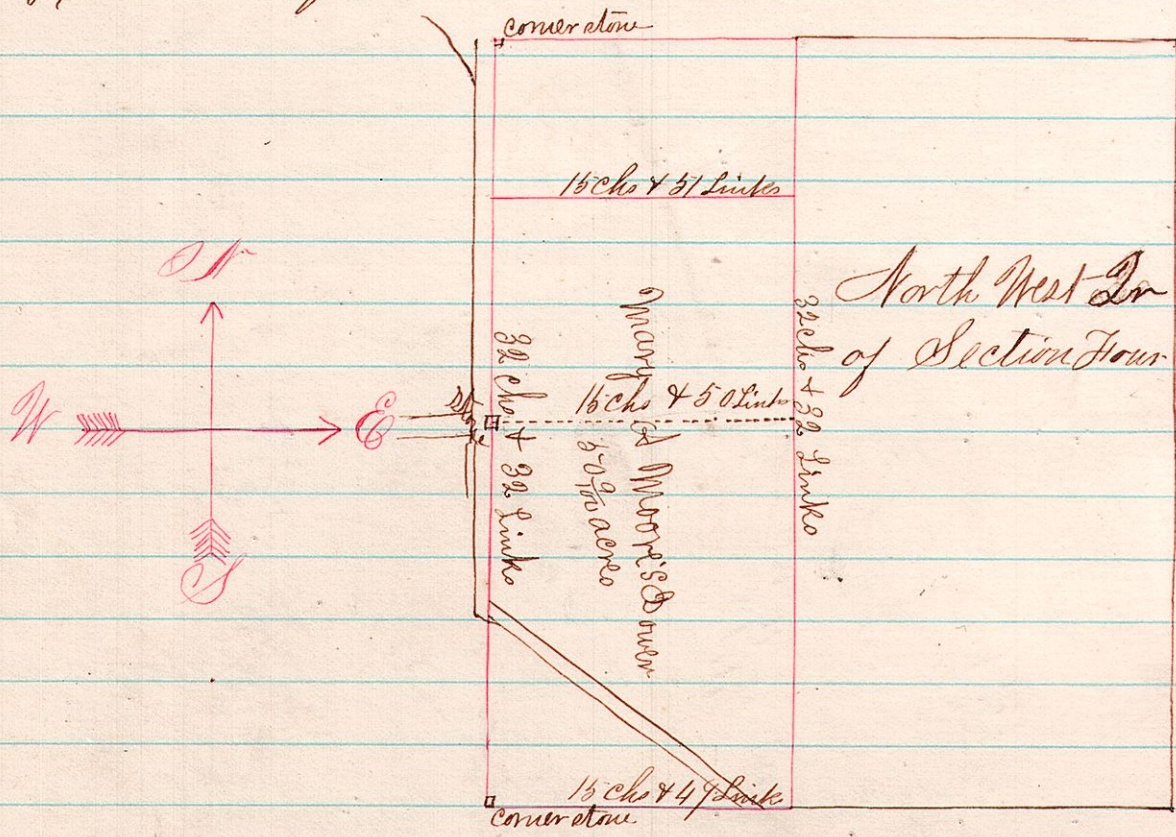


RDS A Survey made by order of Court to assign dower to Mary

8 8 4 A. Moore

N<sup>o</sup> 166

West half of the Ct. W. quarter



January 29<sup>th</sup> 1877.

J. B. Calhoun  
County Surveyor

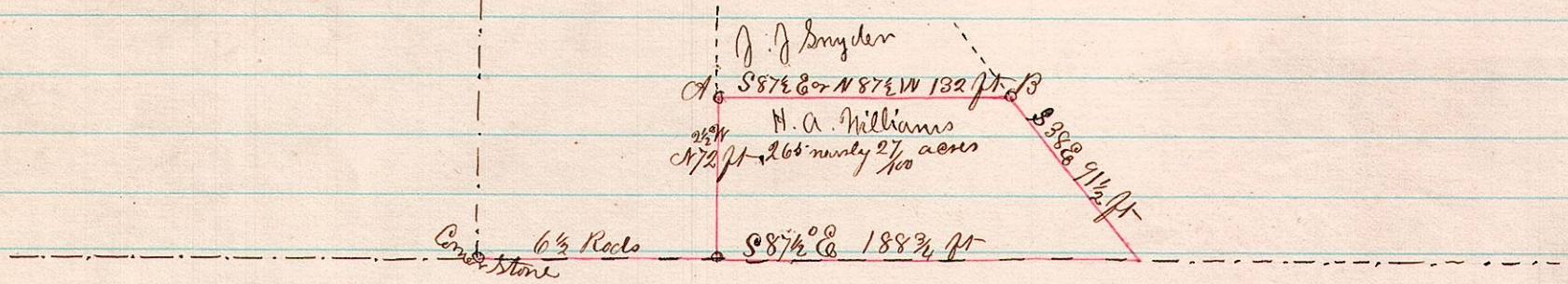
7 8 21

N<sup>o</sup> 167

A Survey made for H. A. Williams being part of the South part of the South East Quarter of Sec 21. Township 8. Range 7.

S. W. Quarter.

S. E. Quarter.



The above survey made to establish the line between J. J. Snyder and H. A. Williams. The line was run according to the above plat and corners marked at the points of A & B at B<sup>th</sup> was marked on the stone pavement by a cross and the line between said two points was established. The variation of the needle from its original survey was 2 1/2°.

Surveyed  
February 10<sup>th</sup> 1877

J. B. Calhoun  
County Surveyor