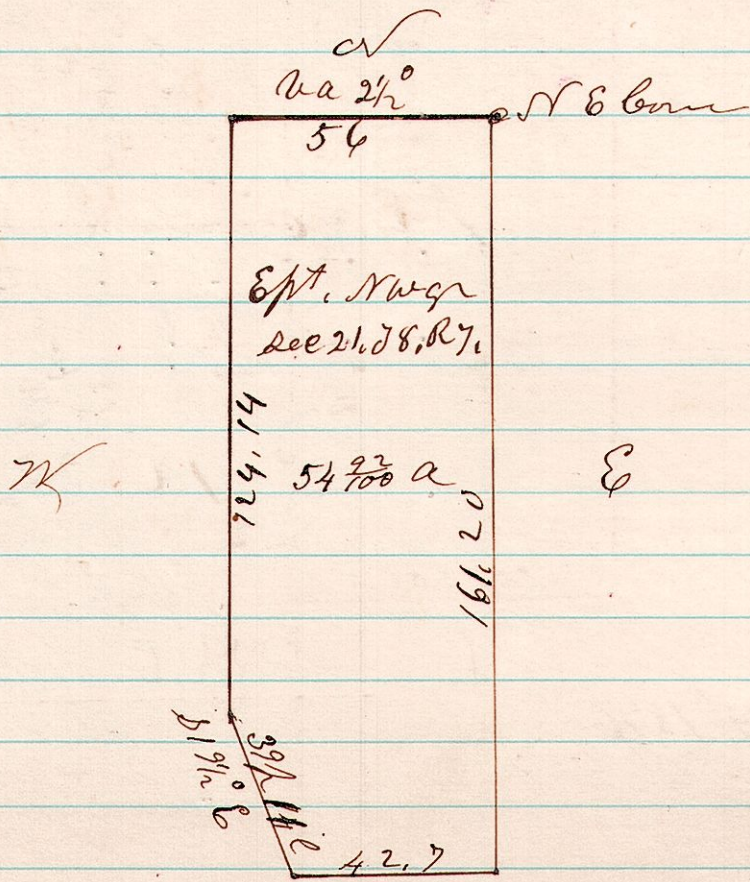


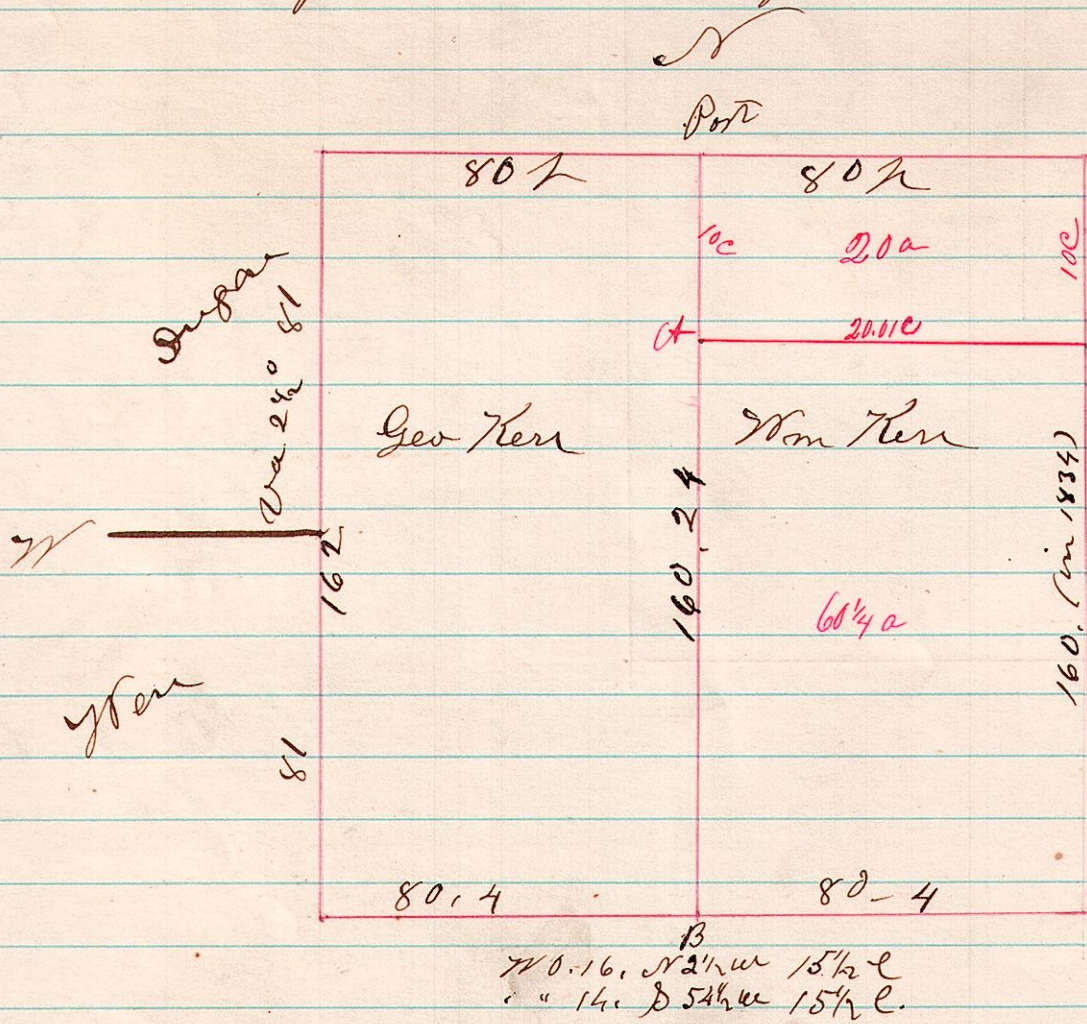
7821 A Survey made for George Patterson being the E pt of NW 1/4 Sec 21. T8. R7 153



May 30<sup>th</sup> 1876

H. H. Robinson  
Co. Surveyor

7818 A Survey made for Geo & Wm Kerr being the dividing of the NW 1/4 of Sec 18. T8. R7. 154



Surveyed the line marked in red  
A-B for Wm Kerr 11/15/78  
J. B. Calkins  
County Surveyor

May 30<sup>th</sup> 1876

H. H. Robinson  
Co. Surveyor