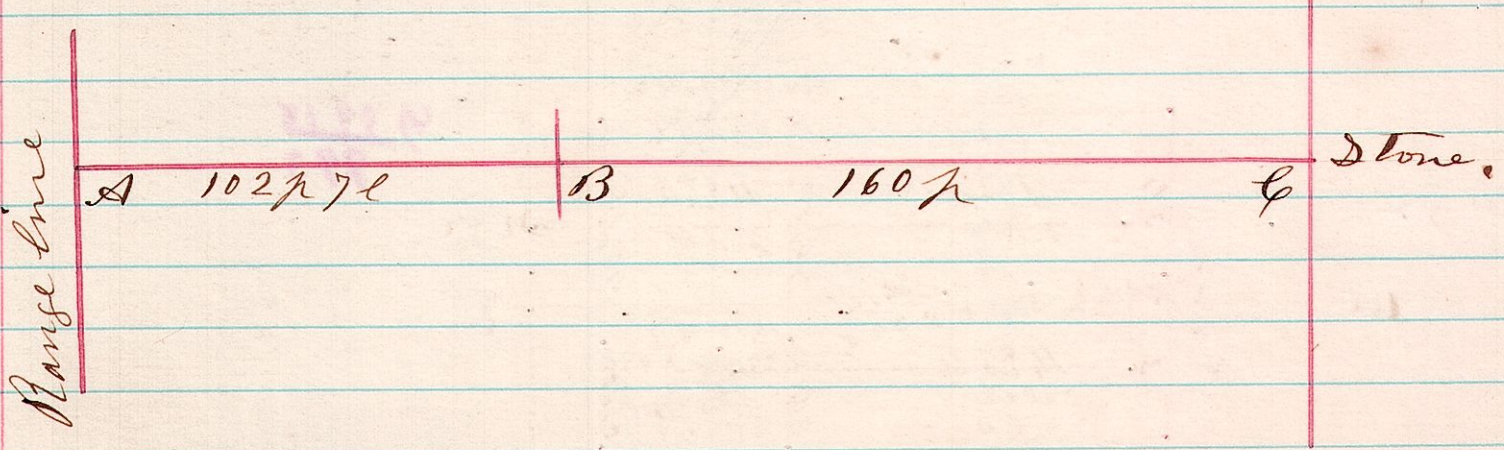


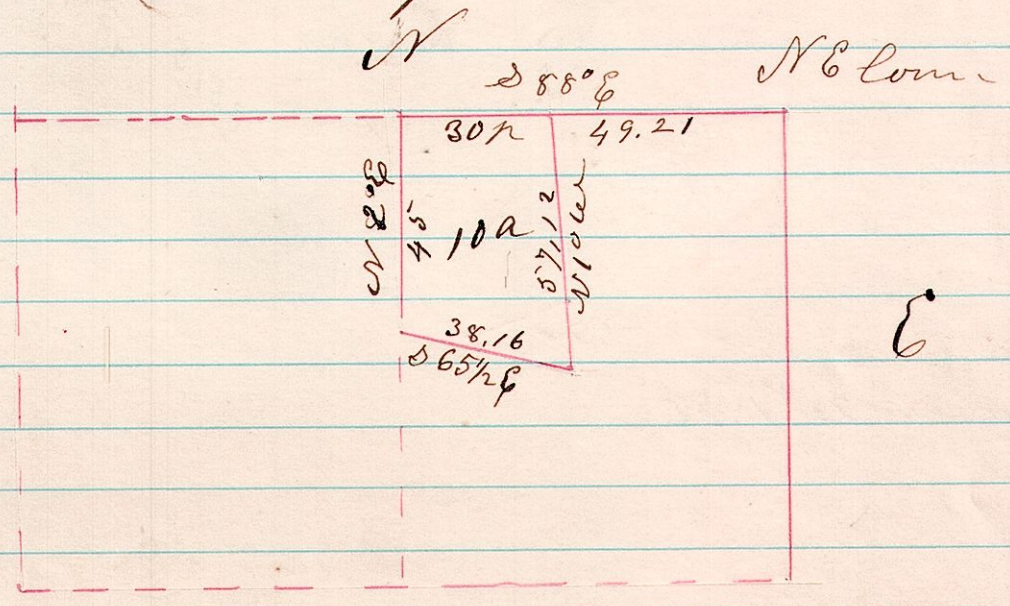
1417<sup>9</sup> A Survey made for John B Brown and Others <sup>135</sup> being the line between sections 6 & 7. T17. R14.



A. Found the roots where old witness tree stood, Established Corner from same. Took for new witness, B Oak, 14. N71°E. 39 l.

B. Old original Bearings all gone. Established corner by giving the quarters on east side of sec 160 perches, & on straight line between sec corners, took new witness as follows, Beech 16. N27°E. 59 1/2 l.

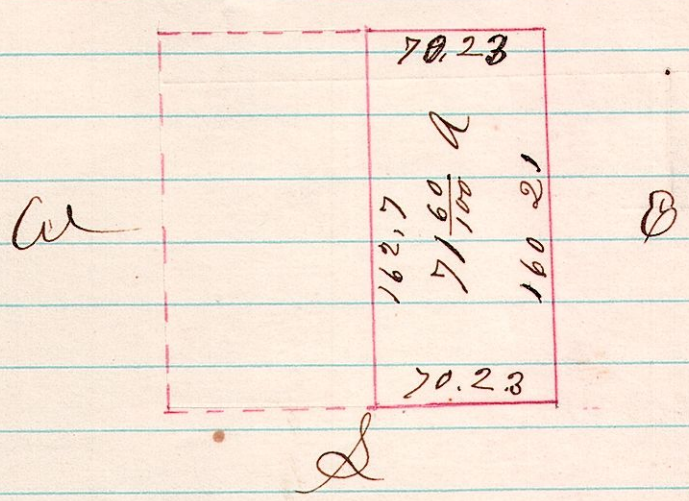
59<sup>lots</sup> 12 A Survey made for John Harman, being <sup>136</sup> part of the north part of Military Lot No 12, T9. R9 R5.



March 23 1876

H. H. Robinson  
Co Surveyor

5813 A Survey made for Christian Joder <sup>137</sup> being the East part of the South west quarter of sec 13. T8. R5.



March 24 1876

H. H. Robinson  
Co Surveyor