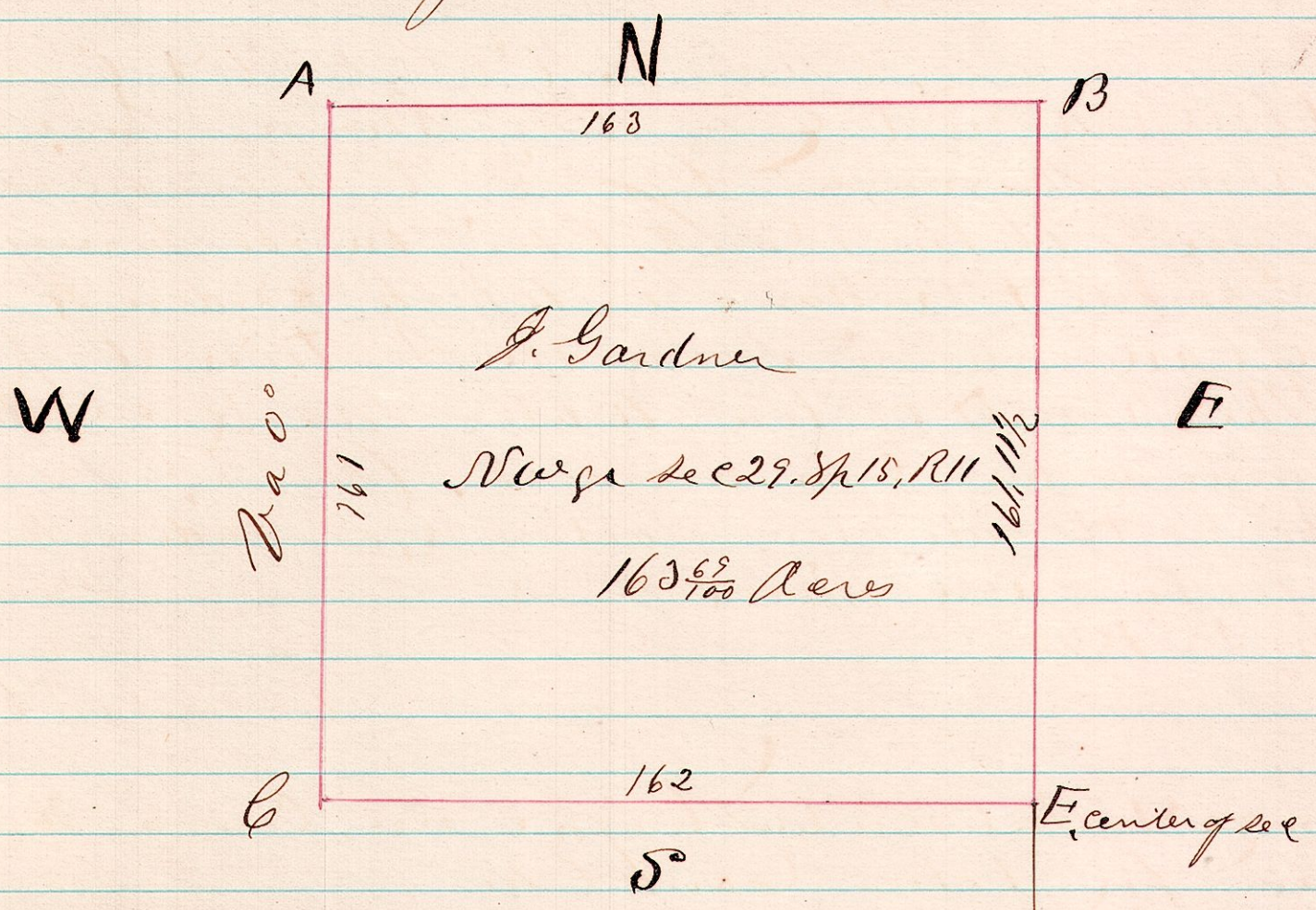


No 75

11 15 29 A Survey made for J Gardner, being the north west quarter of Sec 29, Tp 15, R 11.

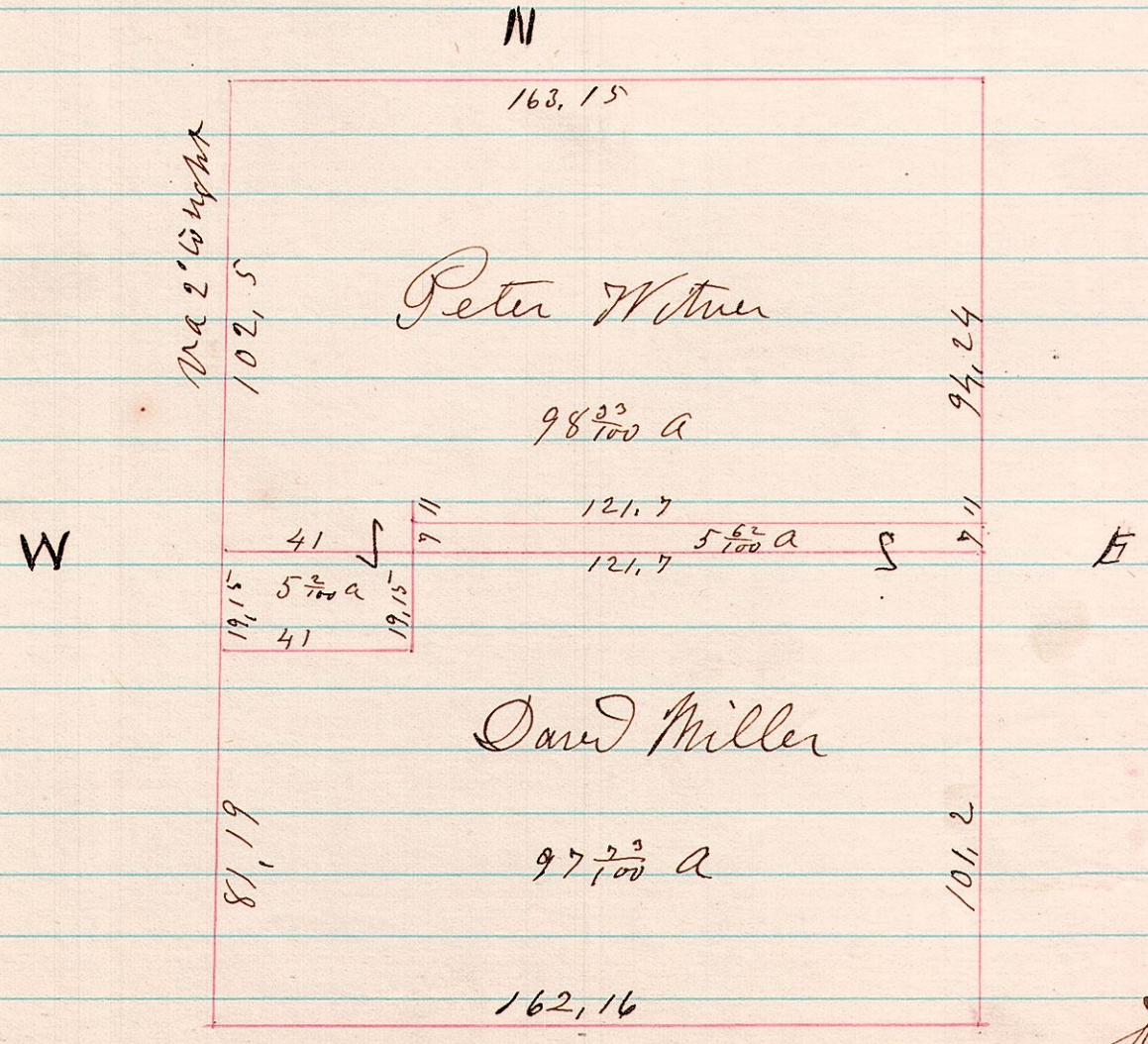


A. Witness tree good on co line, stone corner  
 B. Stone corner, set 30 yrs ago, trees gone,  
 C. Established corner by a witness tree,  
 Taken by S. Robinson May 30<sup>th</sup> 1830, Hickey. N 1108. 39.  
 E. Established corner by measurement across  
 the section & equalizing the distance,  
 Maple 12. N 3W, 13.

H. H. Robinson  
 Co Surveyor.

No 76

6 8 15 A Survey made for Witner & Miller, being military lots No 14 & 15 in 2<sup>d</sup> gr. Tp 8, R 6.



Surveyed June 7<sup>th</sup> 1835

H. H. Robinson  
 Co Surveyor