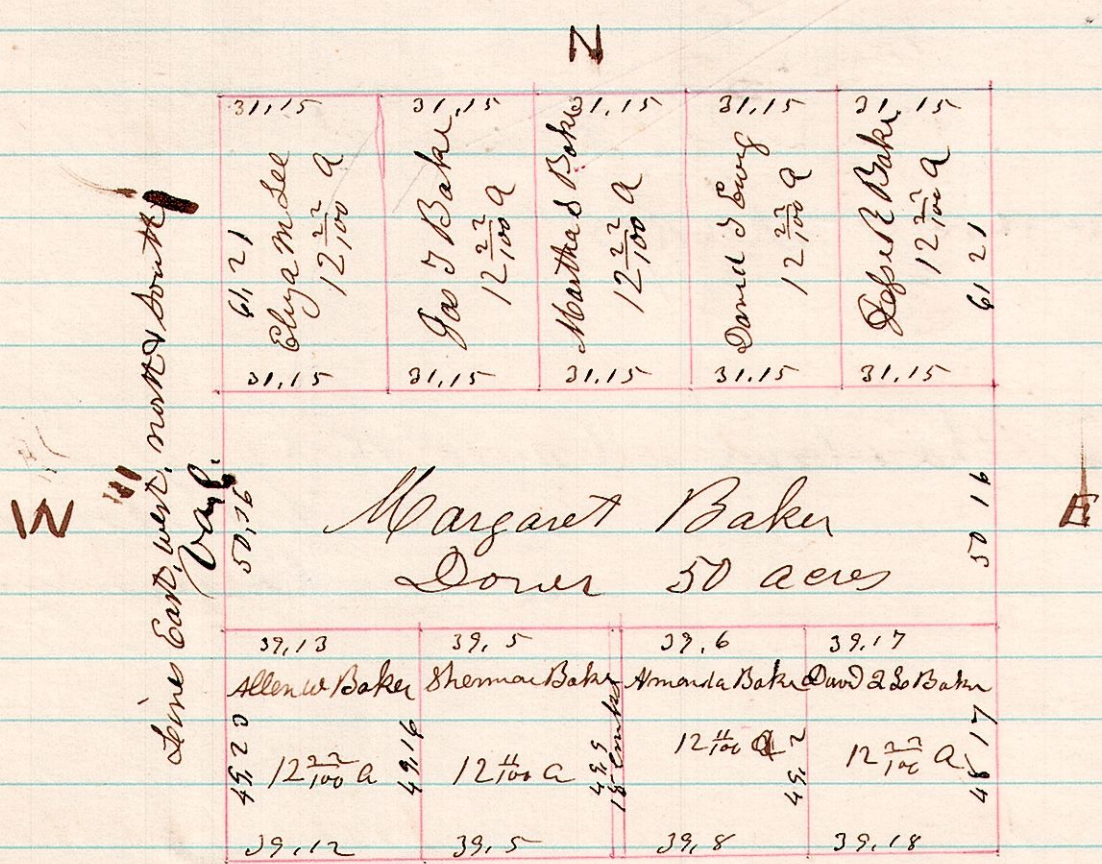


No 66

R 5^{sw} 14 17 9 A Survey made by order of court, Being Dower & Partition, in case of Baker v Baker, being the north west quarter of section 9, T. 17. R. 14



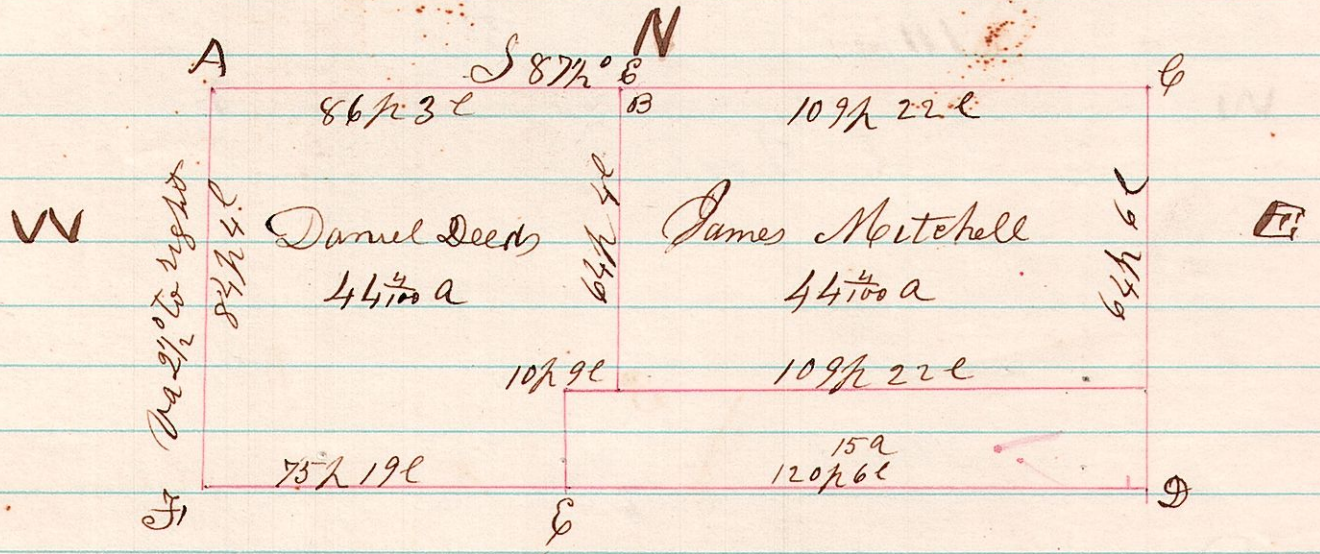
Commissioners
 Wm McFarland
 Chas Boles
 H. H. Robinson
 Chas Carner
 Wm McFarland
 Chas Boles

I certify the above to be a correct plat as surveyed
 Apr 12th 1875

H. H. Robinson
 Commissioner

No 67

6 8^{sw} 6 A Survey made by James Mitchell & Daniel Deeds being Military lot No 6, 2^d gr. T. 8. R. 6.



- A. Beech 12, S 87° E 51 c
- " Ironwood 8, N 51° E 29 "
- B. Chestnut, 10, S 2 1/2° W, 60 c
- C. Hickory 14, S 61 1/2° W 44 c
- " Walnut 6, S 67° W 16 "
- D. Gum 20, N 17° E 62 "
- " Walnut 12, S 11 1/2° W 24 "
- E. Walnut 12, N 2 1/2° W 60 "
- F. Chestnut 36, S 48° W 8 "

In the above survey all the original corners were gone, I measured along the ends of several lots, starting & ending at original corners, & dividing the measurement Equally between all the lots, & established the corners of the above lot accordingly,
 May 8th 1875,
 H. H. Robinson
 Commissioner