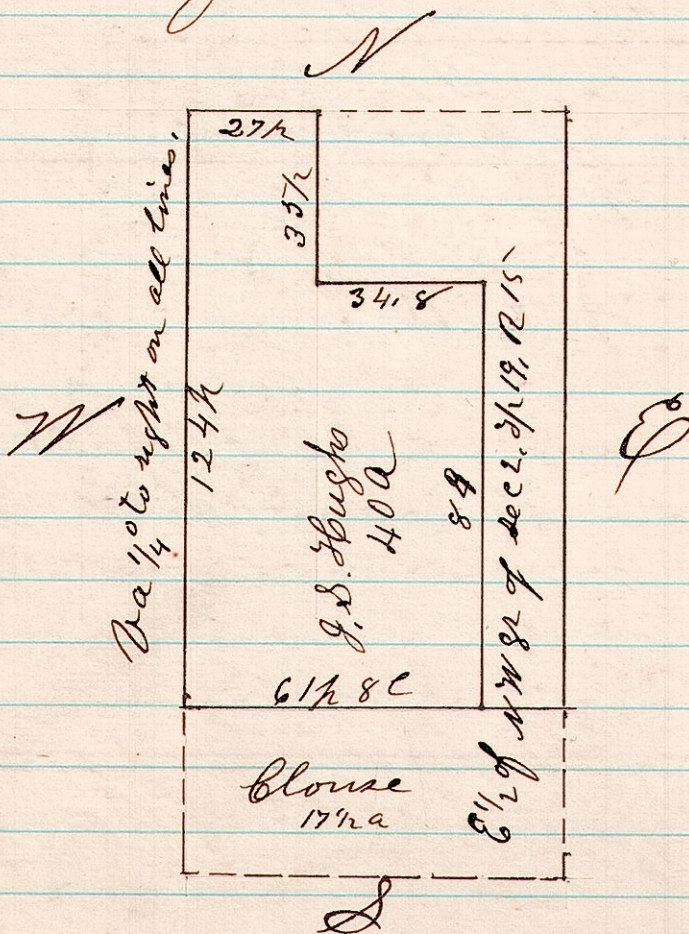


No 56

R 50  
15192

A Survey made for John S. Hughes, being the north west part, of the ~~East~~ half of the north west quarter of Sec 12, T 19, R 15.

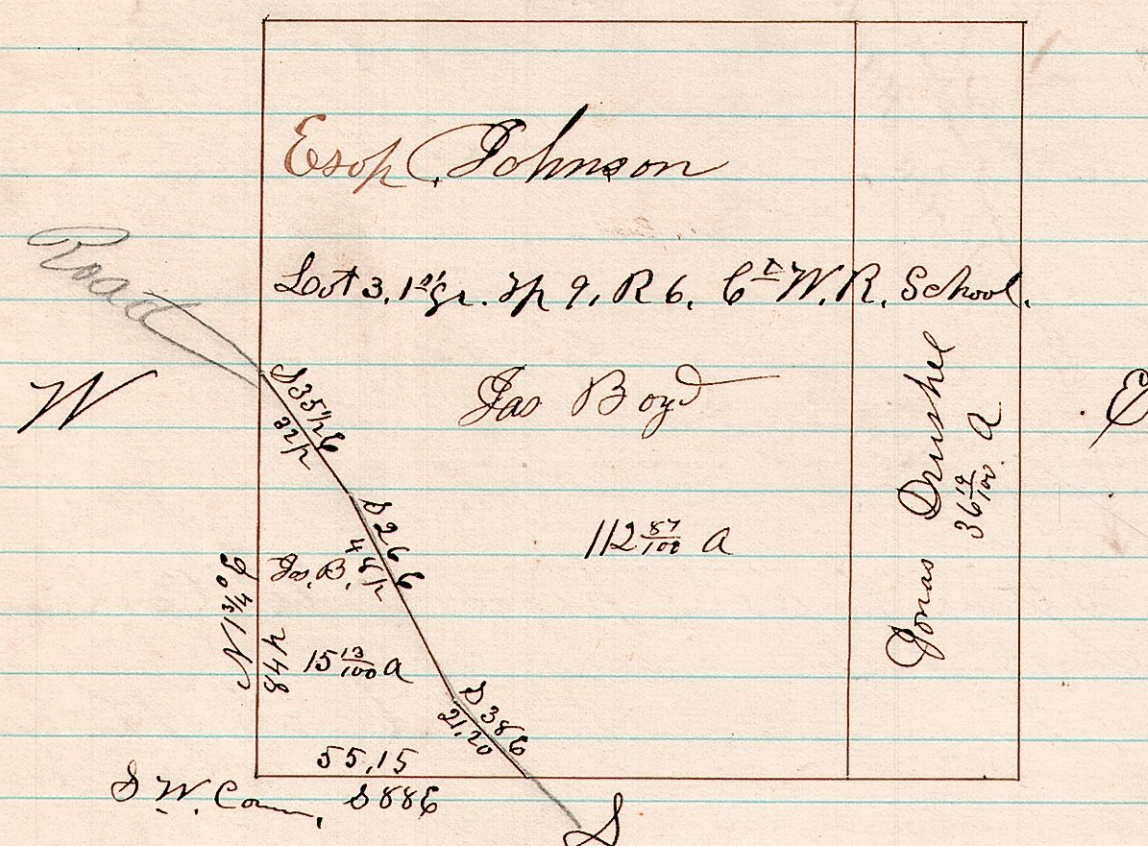


I certify the above to be correct as surveyed  
Dec 16<sup>th</sup> 1874  
H. H. Robinson  
Co Surveyor

693<sup>lot</sup>

No 57

A Survey made for Johnson, being the S W pt of lot 3, 1<sup>st</sup> gr, T 9, R 6, C. & W. R. School land,



Surveyed the above S W pt. of which the above is a correct plat,  
December 21<sup>st</sup> 1874  
H. H. Robinson  
Co Surveyor