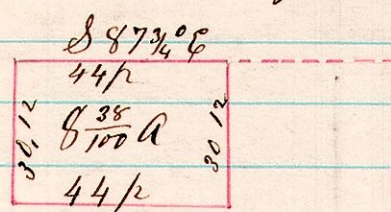


R 5 S

387

No 50

A Survey made for Jonathan J. Miller, being parts of the west 1/4 of the north east quarter of Sec 7, Sp 8, R 5.



Scale 40 perches to the inch.

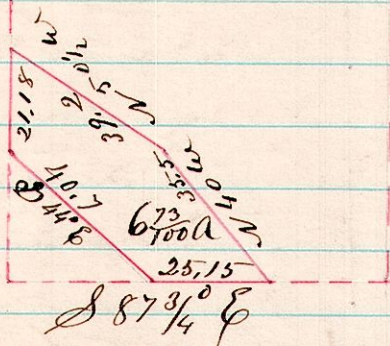
N

W. N. E. q. Sec 7, Sp 8, R 5

J. J. Miller

I certify the above to be a correct plat as surveyed by me November 11th 1874

H. H. Robinson Co Surveyor

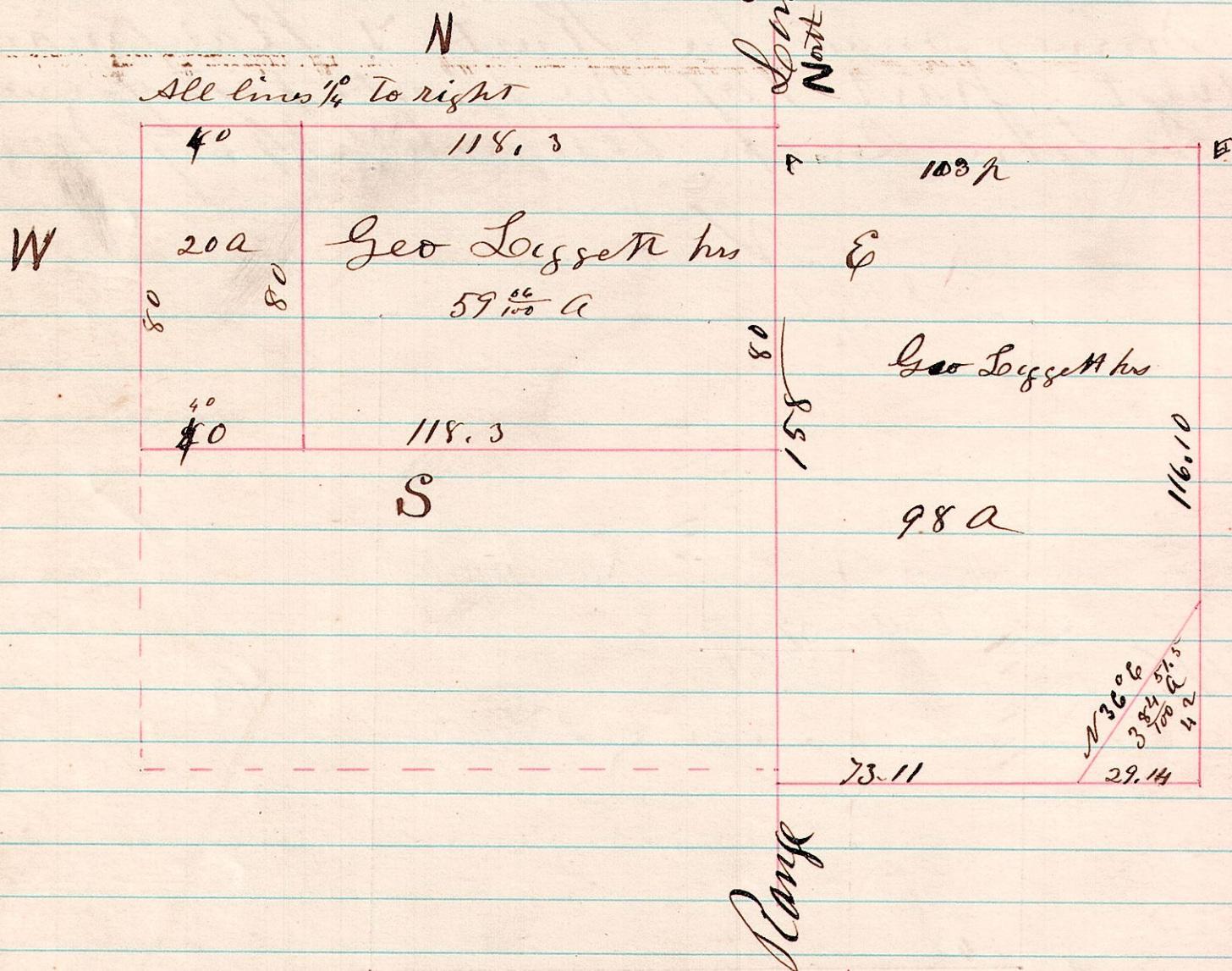


15 19 12

14 17 7

No 51

A Survey made for Geo. Liggett being the N 1/4 of sec 12 of sec 12, Sp 19, R 15, & the S w 1/4 of sec 7, Sp 17, R 14



A. Original tree gone. Established corner & took 13 oak, 4, 17 p. 70 c. & 6. 87 3/4 W, 15 c. Established said corner 3/4 c. S of W E corner of sec 92 of sec 12, Sp 19, R 15, where good vertical tree was standing.
 E. 13 oak 15, 561 w 30 c

I certify the above to be correct as surveyed by me Nov 18th 19th 1874

H. H. Robinson Co Surveyor