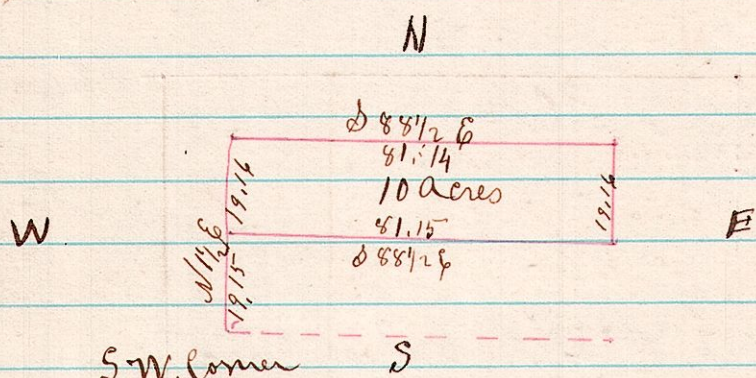


No 44

6918 A Survey made for G. Oplicker, being part of the W 1/2 of the NW 1/4 of Sec 16 T 9, R 6.

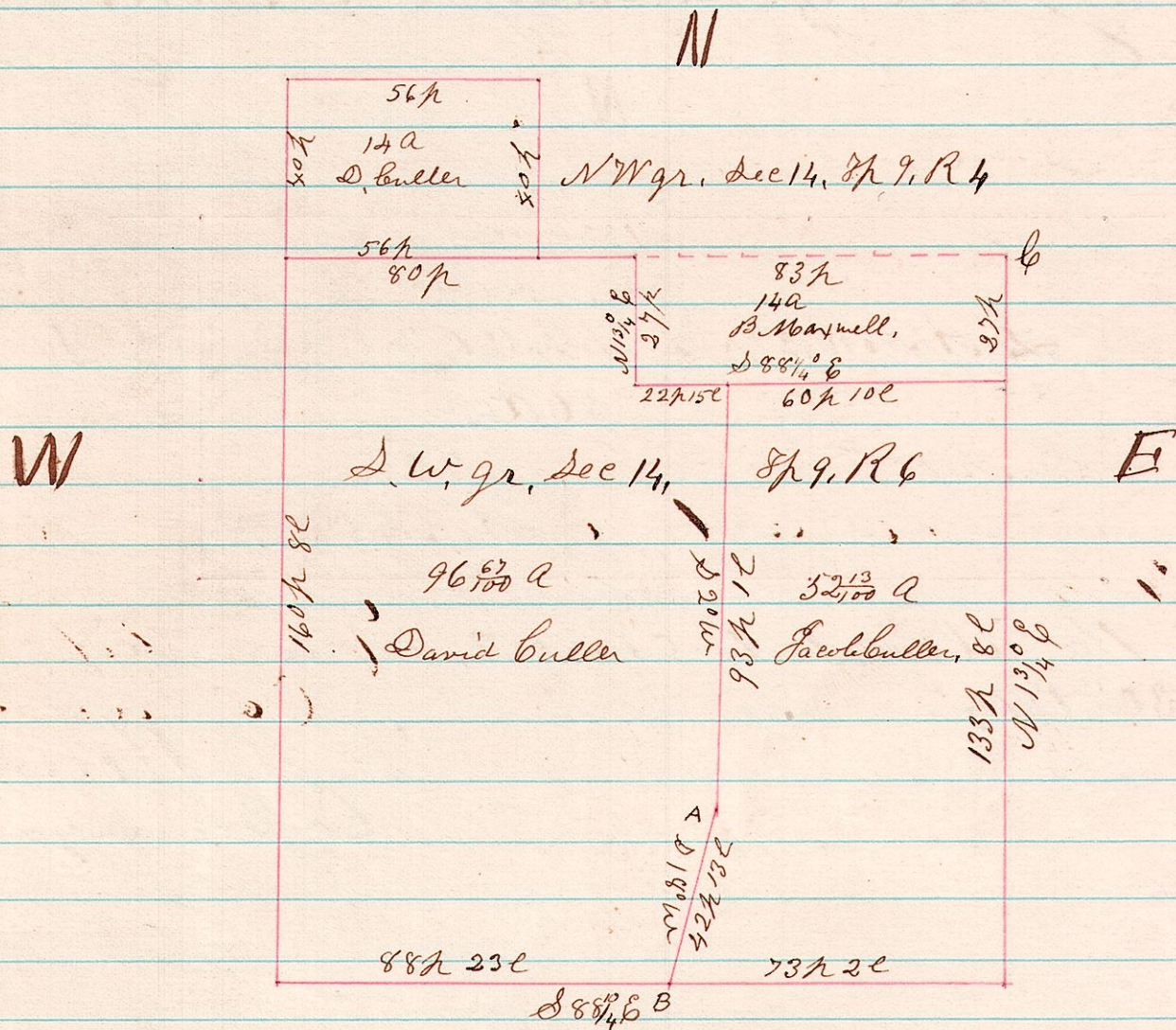


I certify the above to be correct, as surveyed, Oct 5th 1874

H. H. Robinson
Co Surveyor

No 45

6914 A Survey made for D & J Culler, being the S W 1/4 of Sec 14 T 9, R 6.



Surveyed the above S W 1/4 of Sec 14 T 9, R 6 Oct 12th 1874

H. H. Robinson
Co Surveyor