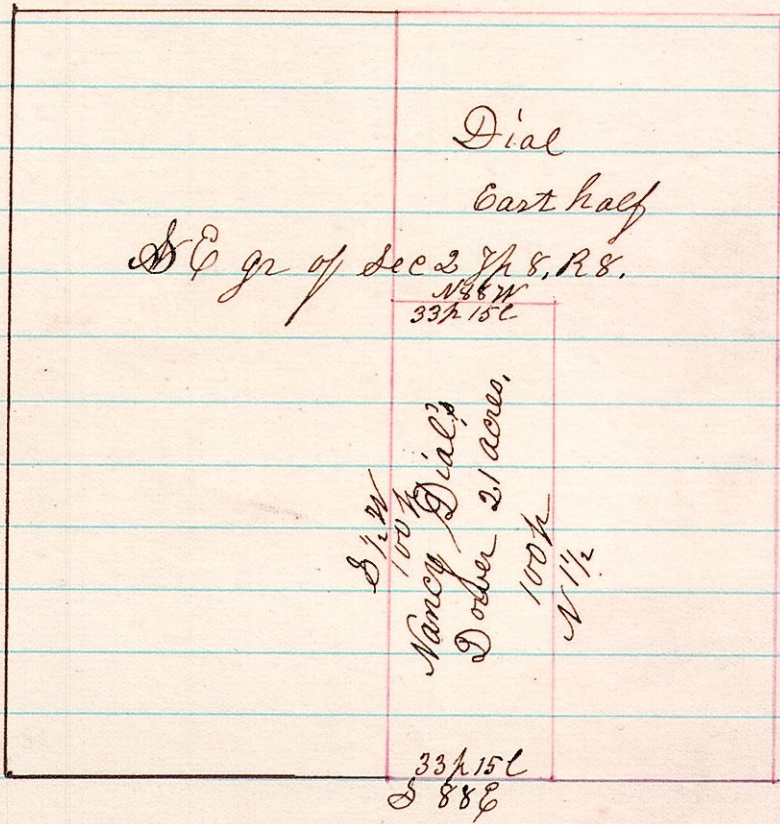


No 4

R T S
8 8 2

A Survey of Dower in case of Dial vs Dial,
January term 1874, in the East 1/2 of the S E qr of Sec 2,
Tp 8, Range 8

John French }
John Caster } Commissioners
H. H. Robinson } to assign Dower.



Scale 40 perches to the inch.

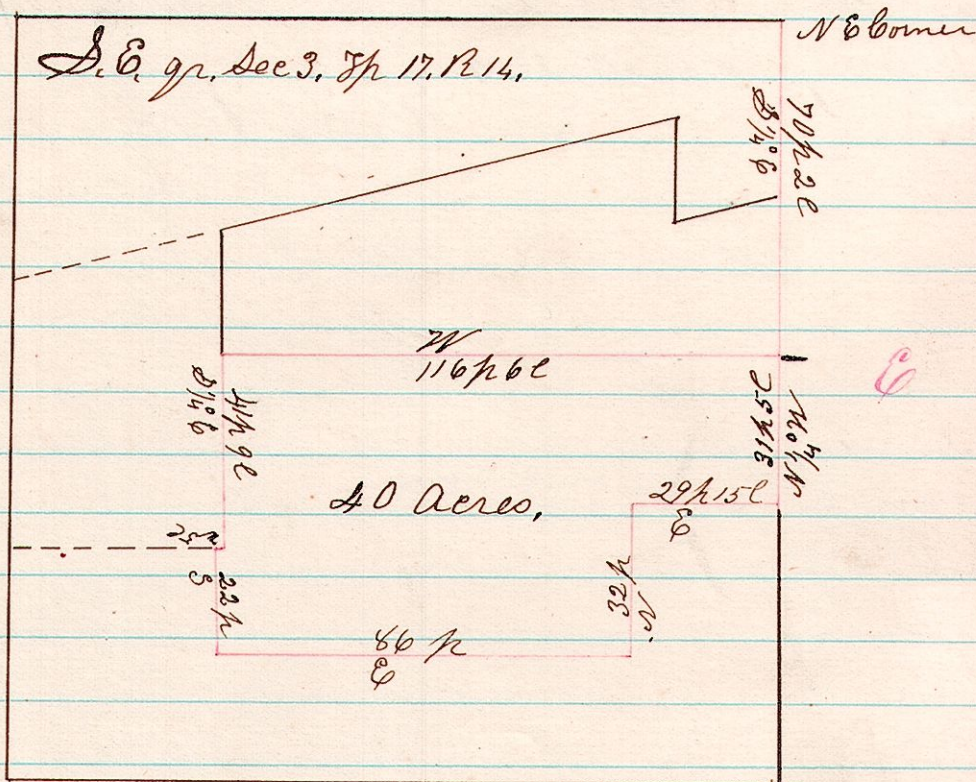
I certify the above to be a correct plat of survey
made February 4th 1874.

H. H. Robinson
County Surveyor

R T S
14 17 3

No 5

A Survey made for John Morrison & Wife
in the S E qr of sec 3, Tp 17, Range 14.



Scale 40 perches to the inch.

I certify the above to be a correct plat of
survey in the N E qr of sec 3, in Tp 17, of Range 14,
February 12th 1874.

H. H. Robinson
County Surveyor