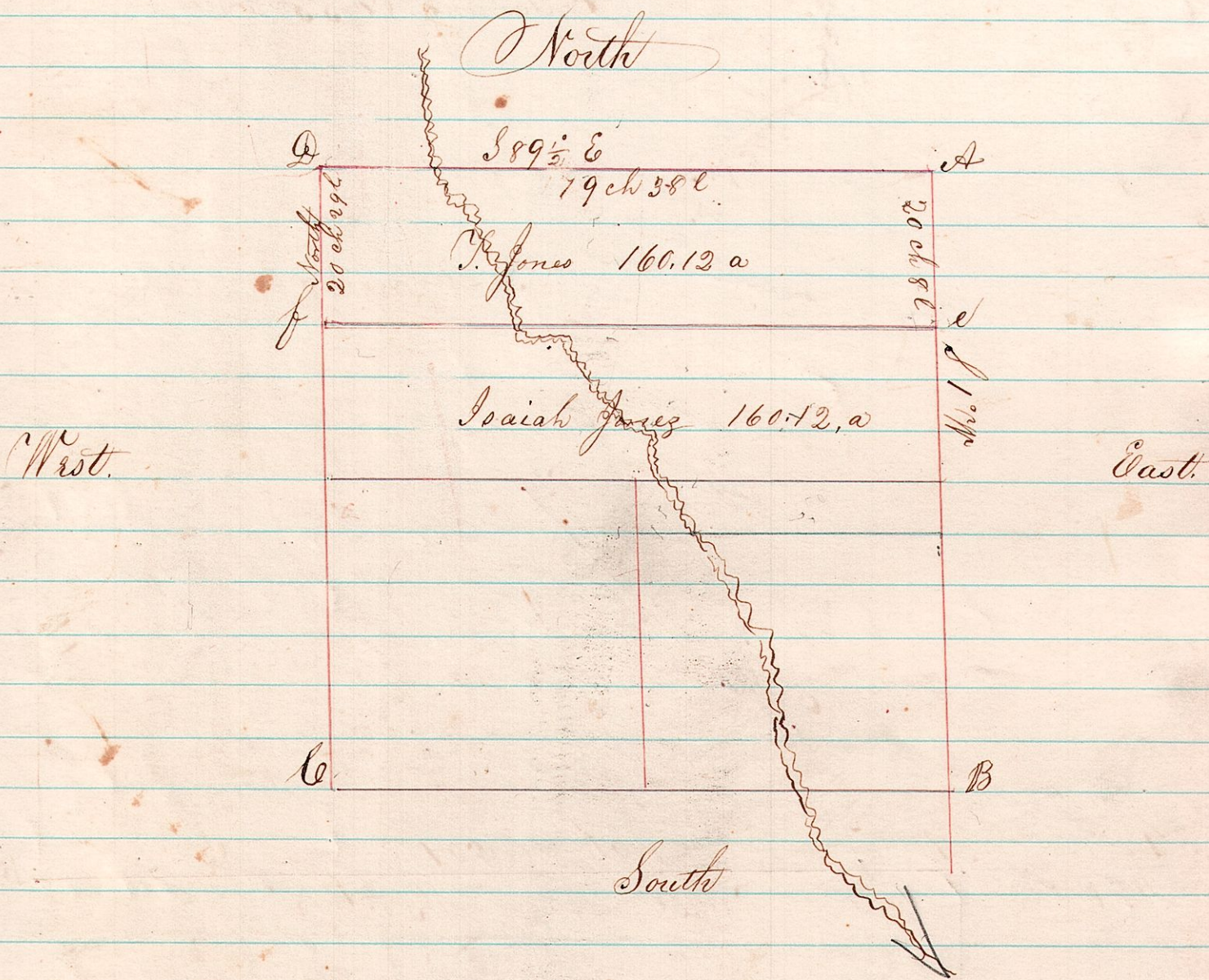


Section No. 33. Township 14. Range. 13.

A Survey made for Thomas Jones on 23^d day of October A. D. 1871 dividing the north half of section 33 Township 14. Range 13 into two equal parts commencing at the South East corner of said section. thence S 1° W 20 chains and 8 links, thence N 89½° W 79 chains & 38 links to stake, thence North 20 chains to a Stone, thence S 89½° E 79 chains & 38 links to the place of beginning containing 160.12 acres more or less, of which the following is a correct plat



Stations	Timber	Diameter	Bearing	Links
A				
e				
f	M. oak	6 in	North	18
	Jack-o.	24 in	East	5
D	w. o.	24	South	16

Joshua Sprongle County Surveyor.