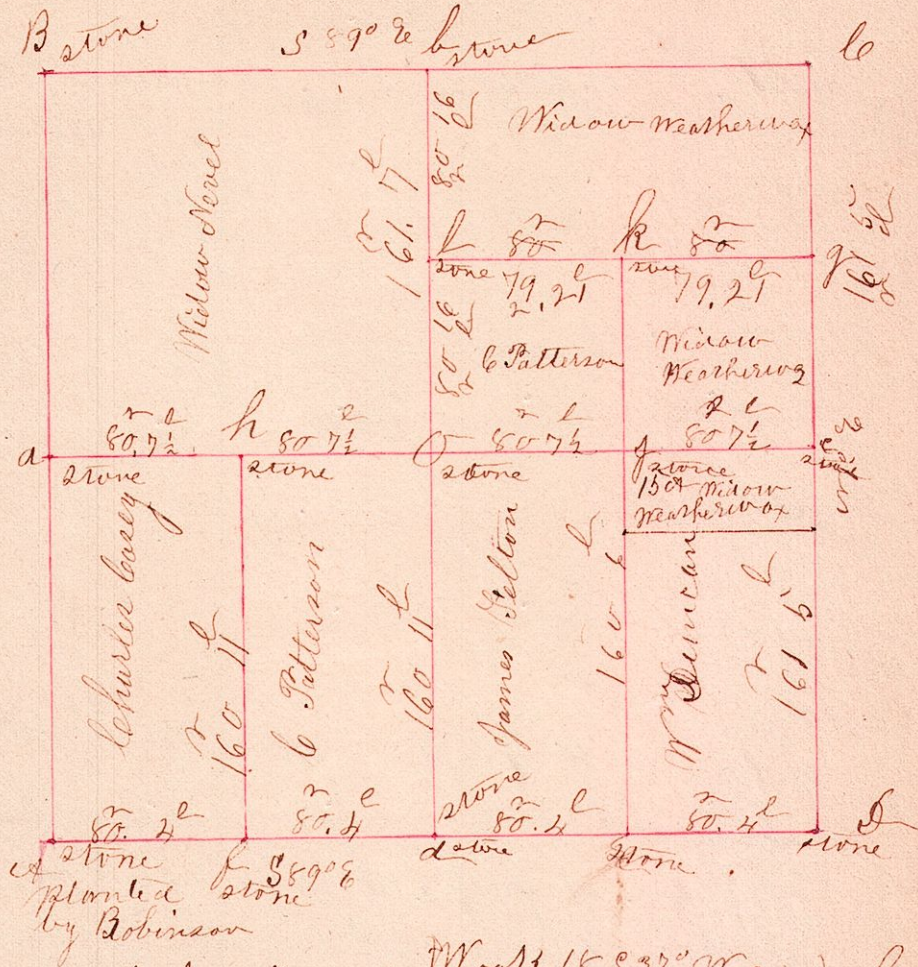


(17)

No. 18,

(18)



- at h } W oak 15 S 37° W 24
- at h } 32 N 8° E 25
- at o } Book 14 S 70° W 32 1/2
- at o } Chestnut " 45 W 48
- at h } Oak 8 N 20 1/2° W 13 1/2
- at h } white oak S 62° W 14

at d' our sand stone mandrel shaped,

Glass under @ part of the corner stones
 Chain carriers John M. Williams & Thomas Edgar

surveyed the above section on the 20th 21st & 25th of June A.D. 1860

I certify that the above is a correct plat and notes of the survey of the above named section

Joseph Edgar county surveyor for Holmes county Ohio,