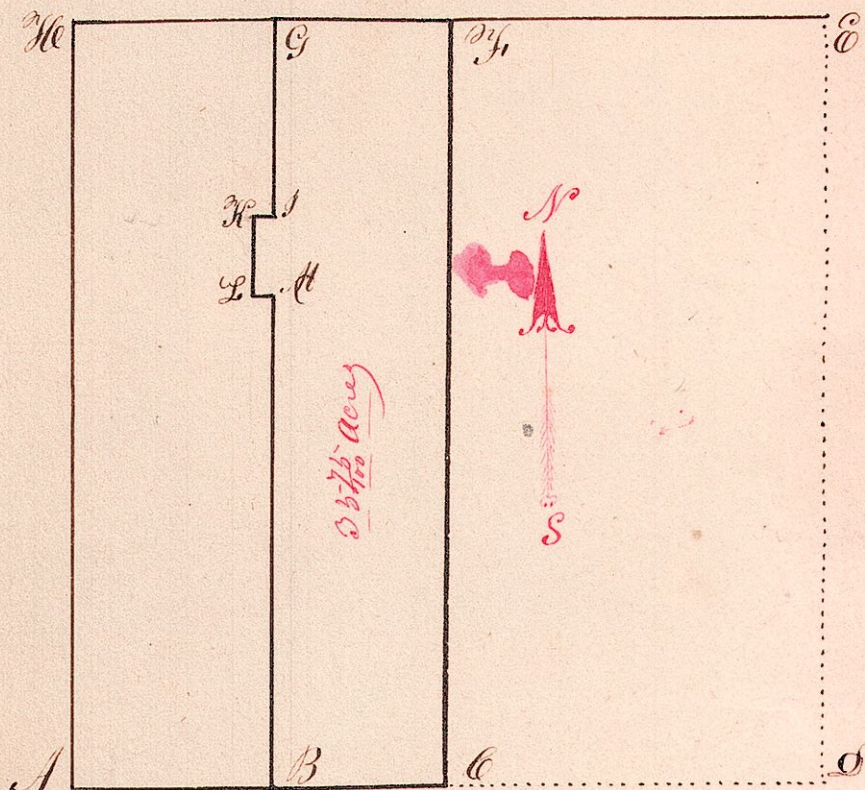


Range No 14 Township No 17 Section No 8



B	Post the Corner	B.M. N <sup>74</sup> ° E 27.50
M	" "	Corner M.L. N <sup>88</sup> ° W 4.12
L	" "	Corner L.R. N <sup>74</sup> ° E 2.00
K	" "	" " S <sup>88</sup> ° E 4.12
J	" "	" " N <sup>74</sup> ° E 10.50
G	" "	" " S <sup>88</sup> ° W 5.70
F	" "	Corner F.C. S <sup>74</sup> ° W 10.00
C	Stone the Corner	C.B. S <sup>88</sup> ° E 8.98

Surveyed the above for George Orner April 1854  
 Being the east parts of the west half of the South  
 west Quarter of Section 8 Township 17 Range 14  
 Containing 35 <sup>7</sup>/<sub>10</sub> Acres

A. J. Overly. C. S.